

**HPS6 Polyclonal Antibody**  
**Purified Rabbit Polyclonal Antibody (Pab)**  
**Catalog # AP56681****Specification**

---

**HPS6 Polyclonal Antibody - Product Information**

Application	WB, IHC-P, IHC-F, IF, ICC, E
Primary Accession	<a href="#">Q86YV9</a>
Reactivity	Rat, Pig, Bovine
Host	Rabbit
Clonality	Polyclonal
Calculated MW	82975

**HPS6 Polyclonal Antibody - Additional Information****Gene ID** 79803**Other Names**

Hermansky-Pudlak syndrome 6 protein, Ruby-eye protein homolog, Ru, HPS6

**Dilution**

<span class = "dilution\_WB">WB~~1:1000</span><br \><span class = "dilution\_IHC-P">IHC-P~~N/A</span><br \><span class = "dilution\_IHC-F">IHC-F~~N/A</span><br \><span class = "dilution\_IF">IF~~1:50~200</span><br \><span class = "dilution\_ICC">ICC~~N/A</span><br \><span class = "dilution\_E">E~~N/A</span>

**Format**

0.01M TBS(pH7.4), 0.09% (W/V) sodium azide and 50% Glyce

**Storage**

Store at -20 °C for one year. Avoid repeated freeze/thaw cycles. When reconstituted in sterile pH 7.4 0.01M PBS or diluent of antibody the antibody is stable for at least two weeks at 2-4 °C.

**HPS6 Polyclonal Antibody - Protein Information****Name** HPS6**Function**

May regulate the synthesis and function of lysosomes and of highly specialized organelles, such as melanosomes and platelet dense granules (PubMed:<a href="http://www.uniprot.org/citations/17041891" target="\_blank">17041891</a>). Acts as a cargo adapter for the dynein- dynactin motor complex to mediate the transport of lysosomes from the cell periphery to the perinuclear region. Facilitates retrograde lysosomal trafficking by linking the motor complex to lysosomes, and perinuclear positioning of lysosomes is crucial for the delivery of endocytic cargos to lysosomes, for lysosome maturation and functioning (PubMed:<a href="http://www.uniprot.org/citations/25189619" target="\_blank">25189619</a>).

**Cellular Location**

Microsome membrane. Cytoplasm, cytosol. Early endosome membrane. Lysosome membrane

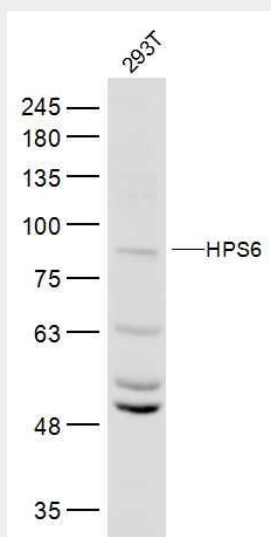
**Tissue Location**

Ubiquitous.

**HPS6 Polyclonal Antibody - Protocols**

Provided below are standard protocols that you may find useful for product applications.

- [Western Blot](#)
- [Blocking Peptides](#)
- [Dot Blot](#)
- [Immunohistochemistry](#)
- [Immunofluorescence](#)
- [Immunoprecipitation](#)
- [Flow Cytometry](#)
- [Cell Culture](#)

**HPS6 Polyclonal Antibody - Images****Sample:**

293T(Human) Cell Lysate at 30 ug

Primary: Anti-HPS6 (bs-17384R) at 1/300 dilution

Secondary: IRDye800CW Goat Anti-Rabbit IgG at 1/20000 dilution

Predicted band size: 83 kD

Observed band size: 83 kD