

HRC Polyclonal Antibody
Purified Rabbit Polyclonal Antibody (Pab)
Catalog # AP56682**Specification**

HRC Polyclonal Antibody - Product Information

Application	IHC-P
Primary Accession	P23327
Host	Rabbit
Clonality	Polyclonal
Calculated MW	80244

HRC Polyclonal Antibody - Additional Information**Gene ID** 3270**Other Names**

Sarcoplasmic reticulum histidine-rich calcium-binding protein, HRC, HCP

Format

0.01M TBS(pH7.4), 0.09% (W/V) sodium azide and 50% Glyce

Storage

Store at -20 °C for one year. Avoid repeated freeze/thaw cycles. When reconstituted in sterile pH 7.4 0.01M PBS or diluent of antibody the antibody is stable for at least two weeks at 2-4 °C.

HRC Polyclonal Antibody - Protein Information**Name** HRC**Synonyms** HCP**Function**

May play a role in the regulation of calcium sequestration or release in the SR of skeletal and cardiac muscle.

Cellular Location

Sarcoplasmic reticulum lumen.

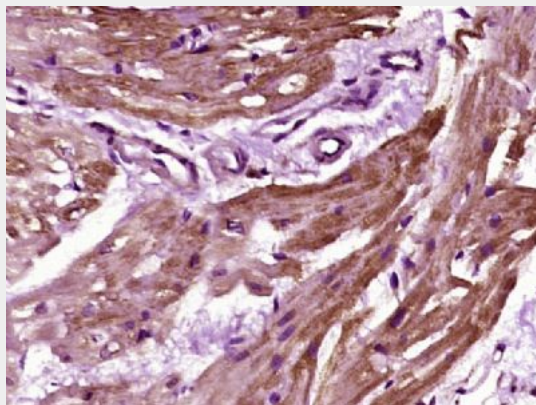
HRC Polyclonal Antibody - Protocols

Provided below are standard protocols that you may find useful for product applications.

- [Western Blot](#)
- [Blocking Peptides](#)
- [Dot Blot](#)

- [Immunohistochemistry](#)
- [Immunofluorescence](#)
- [Immunoprecipitation](#)
- [Flow Cytometry](#)
- [Cell Culture](#)

HRC Polyclonal Antibody - Images



Paraformaldehyde-fixed, paraffin embedded (human heart tissue); Antigen retrieval by boiling in sodium citrate buffer (pH6.0) for 15min; Block endogenous peroxidase by 3% hydrogen peroxide for 20 minutes; Blocking buffer (normal goat serum) at 37°C for 30min; Antibody incubation with (HRC) Polyclonal Antibody, Unconjugated (bs-17387R) at 1:400 overnight at 4°C, followed by operating according to SP Kit(Rabbit) (sp-0023) instructions and DAB staining.