

**SHISA7 Polyclonal Antibody**  
**Purified Rabbit Polyclonal Antibody (Pab)**  
**Catalog # AP56704****Specification****SHISA7 Polyclonal Antibody - Product Information**

Application	WB, IHC-P, IHC-F, IF, ICC, E
Primary Accession	<a href="#">A6NL88</a>
Reactivity	Rat, Dog, Bovine
Host	Rabbit
Clonality	Polyclonal
Calculated MW	54 KDa
Physical State	Liquid
Immunogen	KLH conjugated synthetic peptide derived from human SHISA7
Epitope Specificity	261-360/538
Isotype	IgG
<b>Purity</b>	
affinity purified by Protein A	
Buffer	0.01M TBS (pH7.4) with 1% BSA, 0.02% Proclin300 and 50% Glycerol.
Important Note	This product as supplied is intended for research use only, not for use in human, therapeutic or diagnostic applications.

**SHISA7 Polyclonal Antibody - Additional Information****Gene ID** 729956**Other Names**

Protein shisa-7, Cystine-knot AMPAR modulating protein of 59 kDa, CKAMP59, GABA(A) receptor auxiliary subunit Shisa7, Protein shisa-6-like, SHISA7 ([http://www.genenames.org/cgi-bin/gene\\_symbol\\_report?hgnc\\_id=35409](http://www.genenames.org/cgi-bin/gene_symbol_report?hgnc_id=35409))  
HGNC:35409

**Dilution**

WB ~ 1:1000  
IHC-P ~ N/A  
IHC-F ~ N/A  
IF ~ 1:50 ~ 200  
ICC ~ N/A  
E ~ N/A

**Storage**

Store at -20 °C for one year. Avoid repeated freeze/thaw cycles. When reconstituted in sterile pH 7.4 0.01M PBS or diluent of antibody the antibody is stable for at least two weeks at 2-4 °C.

**SHISA7 Polyclonal Antibody - Protein Information**

**Name** SHISA7 ([HGNC:35409](#))

### Function

Transmembrane protein that regulates gamma-aminobutyric acid type A receptor (GABA(A)R) trafficking, channel deactivation kinetics and pharmacology, necessary for fast inhibitory transmission in the brain. Enhances the action of benzodiazepine, a primary GABA(A)Rs target drug, in the brain. May affect channel kinetics of AMPA-type glutamate receptors (AMPA), the brain's main excitatory neurotransmitter, necessary for synaptic hippocampal plasticity, and memory recall. May regulate the induction and maintenance of long-term potentiation at Schaffer collaterals/CA3-CA1 excitatory synapses.

### Cellular Location

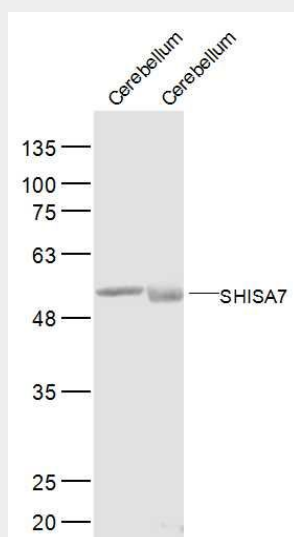
Postsynaptic density membrane {ECO:0000250|UniProtKB:Q8C3Q5}; Single-pass type I membrane protein {ECO:0000250|UniProtKB:Q8C3Q5}. Note=Localizes at GABAergic inhibitory synapses and colocalizes with gephyrin in hippocampal neurons {ECO:0000250|UniProtKB:Q8C3Q5}

## SHISA7 Polyclonal Antibody - Protocols

Provided below are standard protocols that you may find useful for product applications.

- [Western Blot](#)
- [Blocking Peptides](#)
- [Dot Blot](#)
- [Immunohistochemistry](#)
- [Immunofluorescence](#)
- [Immunoprecipitation](#)
- [Flow Cytometry](#)
- [Cell Culture](#)

## SHISA7 Polyclonal Antibody - Images



Sample: Brain (Mouse) Lysate at 40 ug Cerebellum (Mouse) Lysate at 40 ug Cerebellum (rat) Lysate at 40 ug  
Primary: Anti-SHISA7 (bs-17466R) at 1/500 dilution Secondary: IRDye800CW Goat Anti-Rabbit IgG at 1/20000 dilution Predicted band size: 54 kD Observed band size: 54 kD