

SHOX2 Polyclonal Antibody
Purified Rabbit Polyclonal Antibody (Pab)
Catalog # AP56706**Specification**

SHOX2 Polyclonal Antibody - Product Information

Application	IHC-P, IHC-F, IF, ICC, E
Primary Accession	O60902
Reactivity	Rat, Pig, Cat, Dog, Bovine
Host	Rabbit
Clonality	Polyclonal
Calculated MW	35 KDa
Physical State	Liquid
Immunogen	KLH conjugated synthetic peptide derived from human SHOX2
Epitope Specificity	101-200/331
Isotype	IgG
Purity	
affinity purified by Protein A	
Buffer	0.01M TBS (pH7.4) with 1% BSA, 0.02% Proclin300 and 50% Glycerol.
SUBCELLULAR LOCATION	Nucleus.
SIMILARITY	Belongs to the paired homeobox family. Bicoid subfamily. Contains 1 homeobox DNA-binding domain.
Important Note	This product as supplied is intended for research use only, not for use in human, therapeutic or diagnostic applications.

Background Descriptions

This gene is a member of the homeobox family of genes that encode proteins containing a 60-amino acid residue motif that represents a DNA binding domain. Homeobox genes have been characterized extensively as transcriptional regulators involved in pattern formation in both invertebrate and vertebrate species. Several human genetic disorders are caused by aberrations in human homeobox genes. This locus represents a pseudoautosomal homeobox gene that is thought to be responsible for idiopathic short stature, and it is implicated in the short stature phenotype of Turner syndrome patients. This gene is considered to be a candidate gene for Cornelia de Lange syndrome. Alternative splicing results in multiple transcript variants. [provided by RefSeq, Jul 2009]

SHOX2 Polyclonal Antibody - Additional Information**Gene ID** 6474**Other Names**

Short stature homeobox protein 2, Homeobox protein Og12X, Paired-related homeobox protein SHOT, SHOX2, OG12X, SHOT

Target/Specificity

Expressed in heart, skeletal muscle, liver, lung, bone marrow fibroblast, pancreas and placenta.

Dilution

IHC-P ~ N/A
IHC-F ~ N/A
IF ~ 1:50 ~ 200
ICC ~ N/A
E ~ N/A

Format

0.01M TBS(pH7.4), 0.09% (W/V) sodium azide and 50% Glyce

Storage

Store at -20 °C for one year. Avoid repeated freeze/thaw cycles. When reconstituted in sterile pH 7.4 0.01M PBS or diluent of antibody the antibody is stable for at least two weeks at 2-4 °C.

SHOX2 Polyclonal Antibody - Protein Information

Name SHOX2

Synonyms OG12X, SHOT

Function

May be a growth regulator and have a role in specifying neural systems involved in processing somatosensory information, as well as in face and body structure formation.

Cellular Location

Nucleus.

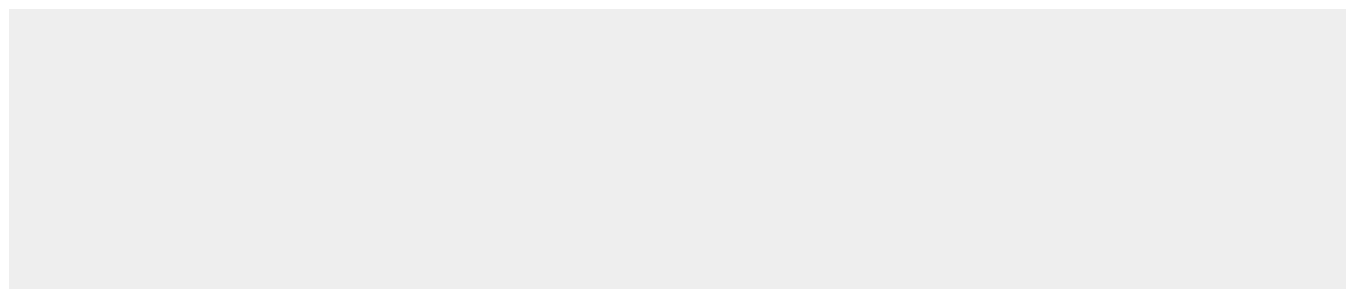
Tissue Location

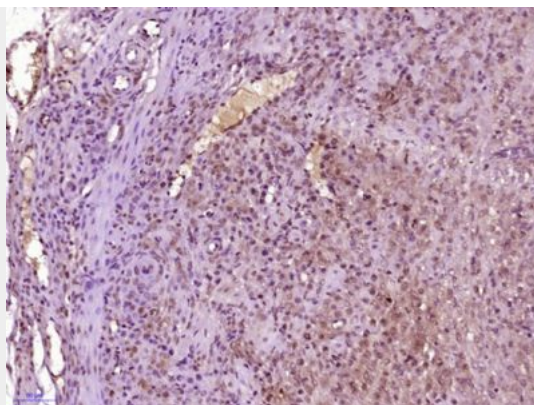
Expressed in heart, skeletal muscle, liver, lung, bone marrow fibroblast, pancreas and placenta

SHOX2 Polyclonal Antibody - Protocols

Provided below are standard protocols that you may find useful for product applications.

- [Western Blot](#)
- [Blocking Peptides](#)
- [Dot Blot](#)
- [Immunohistochemistry](#)
- [Immunofluorescence](#)
- [Immunoprecipitation](#)
- [Flow Cytometry](#)
- [Cell Culture](#)

SHOX2 Polyclonal Antibody - Images



Paraformaldehyde-fixed, paraffin embedded (Mouse embryo); Antigen retrieval by boiling in sodium citrate buffer (pH6.0) for 15min; Block endogenous peroxidase by 3% hydrogen peroxide for 20 minutes; Blocking buffer (normal goat serum) at 37°C for 30min; Antibody incubation with (SHOX2) Polyclonal Antibody, Unconjugated (bs-17471R) at 1:400 overnight at 4°C, followed by operating according to SP Kit(Rabbit) (sp-0023) instructions and DAB staining.