

STX7 Antibody (N-term)
Affinity Purified Rabbit Polyclonal Antibody (Pab)
Catalog # AP5670A**Specification**

STX7 Antibody (N-term) - Product Information

Application	FC, IHC-P, WB,E
Primary Accession	O15400
Other Accession	O70257 , O70439 , Q3ZBT5 , NP_003560.2
Reactivity	Human
Predicted	Bovine, Mouse, Rat
Host	Rabbit
Clonality	Polyclonal
Isotype	Rabbit IgG
Calculated MW	29816
Antigen Region	47-73

STX7 Antibody (N-term) - Additional Information**Gene ID** 8417**Other Names**

Syntaxin-7, STX7

Target/Specificity

This STX7 antibody is generated from rabbits immunized with a KLH conjugated synthetic peptide between 47-73 amino acids from the N-terminal region of human STX7.

Dilution

FC~~1:10~50

IHC-P~~1:50~100

WB~~1:1000

E~~Use at an assay dependent concentration.

Format

Purified polyclonal antibody supplied in PBS with 0.09% (W/V) sodium azide. This antibody is purified through a protein A column, followed by peptide affinity purification.

Storage

Maintain refrigerated at 2-8°C for up to 2 weeks. For long term storage store at -20°C in small aliquots to prevent freeze-thaw cycles.

Precautions

STX7 Antibody (N-term) is for research use only and not for use in diagnostic or therapeutic procedures.

STX7 Antibody (N-term) - Protein Information

Name STX7

Function May be involved in protein trafficking from the plasma membrane to the early endosome (EE) as well as in homotypic fusion of endocytic organelles. Mediates the endocytic trafficking from early endosomes to late endosomes and lysosomes.

Cellular Location

Early endosome membrane; Single-pass type IV membrane protein

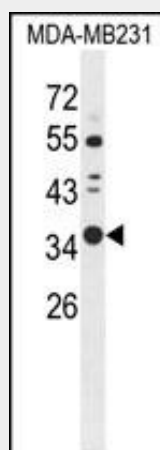
Tissue Location

Highest expression is found in placenta followed by heart, skeletal muscle, kidney and brain. Low expression is found in pancreas, lung and liver

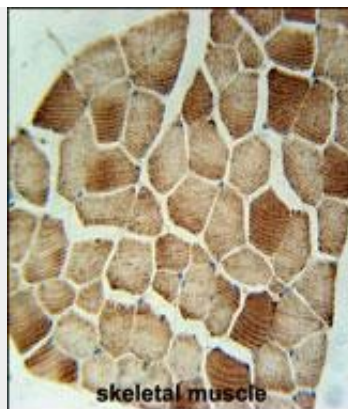
STX7 Antibody (N-term) - Protocols

Provided below are standard protocols that you may find useful for product applications.

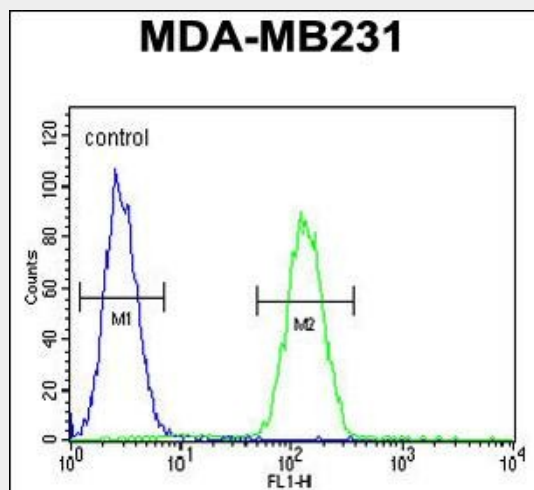
- [Western Blot](#)
- [Blocking Peptides](#)
- [Dot Blot](#)
- [Immunohistochemistry](#)
- [Immunofluorescence](#)
- [Immunoprecipitation](#)
- [Flow Cytometry](#)
- [Cell Culture](#)

STX7 Antibody (N-term) - Images

Western blot analysis of STX7 Antibody (N-term) (Cat. #AP5670a) in MDA-MB231 cell line lysates (35ug/lane). STX7 (arrow) was detected using the purified Pab.



STX7 Antibody (N-term) (Cat. #AP5670a) immunohistochemistry analysis in formalin fixed and paraffin embedded human skeletal muscle followed by peroxidase conjugation of the secondary antibody and DAB staining. This data demonstrates the use of the STX7 Antibody (N-term) for immunohistochemistry. Clinical relevance has not been evaluated.



STX7 Antibody (N-term) (Cat. #AP5670a) flow cytometric analysis of MDA-MB231 cells (right histogram) compared to a negative control cell (left histogram). FITC-conjugated goat-anti-rabbit secondary antibodies were used for the analysis.

STX7 Antibody (N-term) - Background

Syntaxin 7 is involved in the ordered fusion of endosomes and lysosomes with the phagosome, where phagocytic cells kill and degrade internalized foreign particles. Syntaxin 7 is found in late endosomes and lysosomes; whereas Syntaxin 12 is localized to the recycling endosome compartment, both are recruited to the phagosome. However, STX12 is acquired earlier before rapidly recycling off the phagosome, whereas STX7 is recruited later and continues to accumulate throughout the phagosome maturation process.

STX7 Antibody (N-term) - References

Prekeris, R., et al. Mol. Biol. Cell 10(11):3891-3908(1999)
 Steegmaier, M., et al. J. Biol. Chem. 273(51):34171-34179(1998)
 Wong, S.H., et al. J. Biol. Chem. 273(1):375-380(1998)
 Wang, H., et al. Gene 199 (1-2), 39-48 (1997)