

**SIAH3 Polyclonal Antibody**  
**Purified Rabbit Polyclonal Antibody (Pab)**  
**Catalog # AP56710****Specification****SIAH3 Polyclonal Antibody - Product Information**

|                                |   |
|--------------------------------|---|
| Application                    | WB, IHC-P, IHC-F, IF, ICC   |
| Primary Accession              | <a href="#">Q8IW03</a>  |
| Reactivity                     | Dog   |
| Host                           | Rabbit  |
| Clonality                      | Polyclonal  |
| Calculated MW                  | 31 KDa  |
| Physical State                 | Liquid  |
| Immunogen                      | KLH conjugated synthetic peptide derived from human SIAH3   |
| Epitope Specificity            | 1-100/269   |
| Isotype                        | IgG   |
| <b>Purity</b>                  |   |
| affinity purified by Protein A |   |
| Buffer                         | 0.01M TBS (pH7.4) with 1% BSA, 0.02% Proclin300 and 50% Glycerol.   |
| SIMILARITY                     | Belongs to the SINA (Seven in absentia) family. Contains 1 SIAH-type zinc finger.   |
| Important Note                 | This product as supplied is intended for research use only, not for use in human, therapeutic or diagnostic applications. |

**Background Descriptions**

Members of the SINA (seven in absentia) protein family are components of ubiquitin ligase complexes, which target proteins for proteasomal degradation. SIAH3 (seven in absentia homolog 3) is a 269 amino acid protein that belongs to the SINA family, contains one SIAH-type zinc finger and is encoded by a gene located on human chromosome 13. Comprising nearly 4% of human DNA, chromosome 13 contains around 114 million base pairs and 400 genes. Key tumor suppressor genes on chromosome 13 include the breast cancer susceptibility gene, BRCA2, and the RB1 (retinoblastoma) gene. RB1 encodes a crucial tumor suppressor protein which, when defective, leads to malignant growth in the retina and has been implicated in a variety of other cancers. The gene SLITRK1, which is associated with Tourette syndrome, is on chromosome 13. As with most chromosomes, polysomy of part or all of chromosome 13 is deleterious to development and decreases the odds of survival. Trisomy 13, also known as Patau syndrome, is quite deadly and the few who survive past one year suffer from permanent neurologic defects, difficulty eating and vulnerability to serious respiratory infections.

**SIAH3 Polyclonal Antibody - Additional Information****Gene ID** 283514**Other Names**

Seven in absentia homolog 3, Siah-3, SIAH3

**Dilution**

<span class = "dilution\_WB">WB~~1:1000</span><br \><span class = "dilution\_IHC-P">IHC-P~~N/A</span><br \><span class = "dilution\_IHC-F">IHC-F~~N/A</span><br \><span class = "dilution\_IF">IF~~1:50~200</span><br \><span class = "dilution\_ICC">ICC~~N/A</span>

**Format**

0.01M TBS(pH7.4), 0.09% (W/V) sodium azide and 50% Glyce

**Storage**

Store at -20 °C for one year. Avoid repeated freeze/thaw cycles. When reconstituted in sterile pH 7.4 0.01M PBS or diluent of antibody the antibody is stable for at least two weeks at 2-4 °C.

**SIAH3 Polyclonal Antibody - Protein Information**

**Name** SIAH3

**Function**

Negative regulator of PRKN translocation to damaged mitochondria. Acts probably by destabilizing PINK1 protein, hence inhibiting PRKN targeting to dysfunctional depolarized mitochondria.

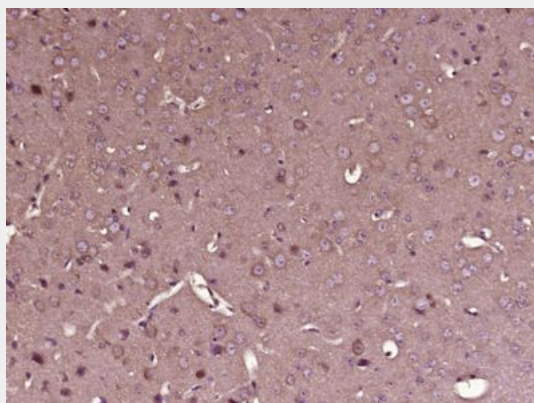
**Cellular Location**

Mitochondrion.

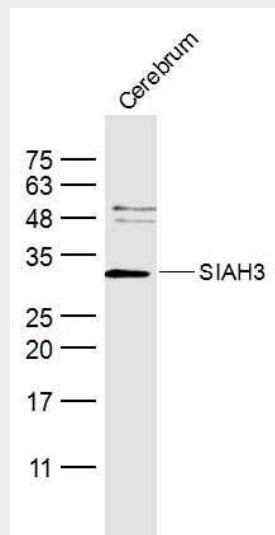
**SIAH3 Polyclonal Antibody - Protocols**

Provided below are standard protocols that you may find useful for product applications.

- [Western Blot](#)
- [Blocking Peptides](#)
- [Dot Blot](#)
- [Immunohistochemistry](#)
- [Immunofluorescence](#)
- [Immunoprecipitation](#)
- [Flow Cytometry](#)
- [Cell Culture](#)

**SIAH3 Polyclonal Antibody - Images**

Paraformaldehyde-fixed, paraffin embedded (Mouse brain); Antigen retrieval by boiling in sodium citrate buffer (pH6.0) for 15min; Block endogenous peroxidase by 3% hydrogen peroxide for 20 minutes; Blocking buffer (normal goat serum) at 37°C for 30min; Antibody incubation with (SIAH3) Polyclonal Antibody, Unconjugated (bs-17481R) at 1:400 overnight at 4°C, followed by operating according to SP Kit(Rabbit) (sp-0023) instructions and DAB staining.



**Sample:**

Cerebrum (Mouse) Lysate at 40 ug

Primary: Anti-SIAH3 (bs-17481R) at 1/300 dilution

Secondary: IRDye800CW Goat Anti-Rabbit IgG at 1/20000 dilution

Predicted band size: 31 kD

Observed band size: 31 kD