

SKOR1 Polyclonal Antibody
Purified Rabbit Polyclonal Antibody (Pab)
Catalog # AP56721**Specification**

SKOR1 Polyclonal Antibody - Product Information

Application	IHC-P, IHC-F, IF, ICC
Primary Accession	P84550
Reactivity	Rat, Pig, Bovine
Host	Rabbit
Clonality	Polyclonal
Calculated MW	100 KDa
Physical State	Liquid
Immunogen	KLH conjugated synthetic peptide derived from human SKOR1
Epitope Specificity	1-100/965
Isotype	IgG
Purity	
affinity purified by Protein A	
Buffer	0.01M TBS (pH7.4) with 1% BSA, 0.02% Proclin300 and 50% Glycerol.
SUBCELLULAR LOCATION	Nucleus.
SIMILARITY	Belongs to the SKI family.
Important Note	This product as supplied is intended for research use only, not for use in human, therapeutic or diagnostic applications.

Background Descriptions

LBXCOR1 is a 965 amino acid protein belonging to the SKI family. Localizing to nucleus, LBXCOR1 is highly expressed in the central nervous system (CNS) as well as developing spinal cord and adult brain and testis. LBXCOR1 contains a CH1 domain which is required for transcriptional repression and also acts as a transcriptional co-repressor of LBX1. LBXCOR1 additionally interacts with SMAD1, SMAD2 and SMAD3, and inhibits BMP signaling. Existing as three alternatively spliced isoforms, the gene encoding LBXCOR1 maps to human chromosome 15q23. Encoding more than 700 genes, chromosome 15 is made up of approximately 106 million base pairs and consists of about 3% of the human genome. Angelman and Prader-Willi syndromes, as well as Tay-Sachs disease and Marfan syndrome, are all associated with mutations to chromosome 15.

SKOR1 Polyclonal Antibody - Additional Information**Gene ID** 390598**Other Names**

SKI family transcriptional corepressor 1, Functional Smad-suppressing element on chromosome 15, Fussel-15, LBX1 corepressor 1, Ladybird homeobox corepressor 1, SKOR1, CORL1, FUSSEL15, LBXCOR1

Target/Specificity

Present specifically in cerebellar Purkinje cells (at protein level).

Dilution

IHC-P ~ ~ N/A
IHC-F ~ ~ N/A
IF ~ ~ 1:50 ~ 200
ICC ~ ~ N/A

Format

0.01M TBS(pH7.4), 0.09% (W/V) sodium azide and 50% Glyce

Storage

Store at -20 °C for one year. Avoid repeated freeze/thaw cycles. When reconstituted in sterile pH 7.4 0.01M PBS or diluent of antibody the antibody is stable for at least two weeks at 2-4 °C.

SKOR1 Polyclonal Antibody - Protein Information

Name SKOR1

Synonyms CORL1, FUSSEL15, LBXCOR1

Function

Acts as a transcriptional corepressor of LBX1 (By similarity). Inhibits BMP signaling.

Cellular Location

Nucleus.

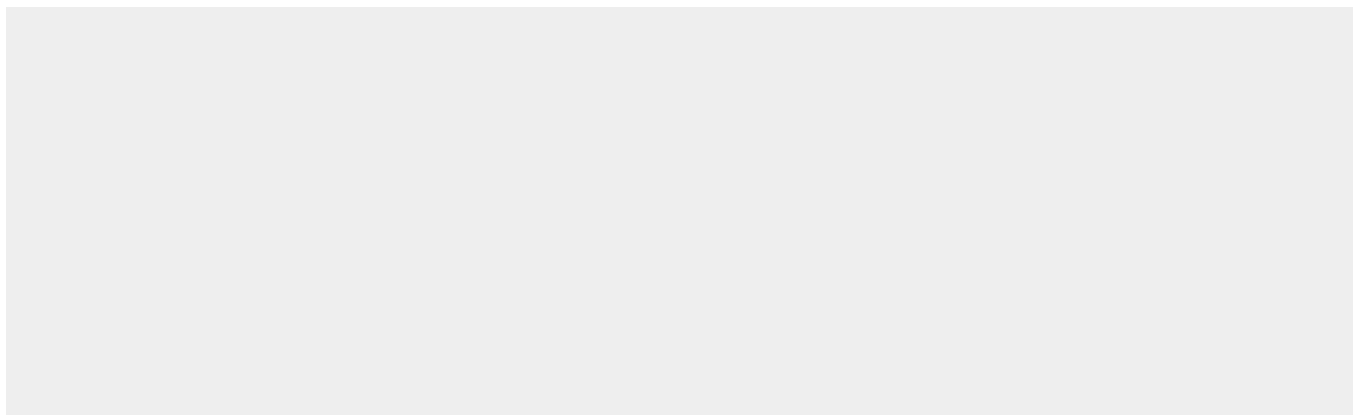
Tissue Location

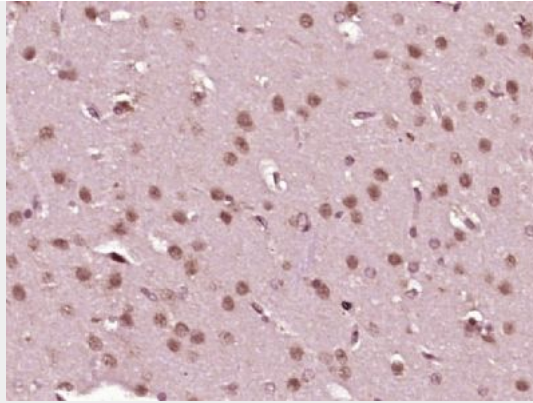
Present specifically in cerebellar Purkinje cells (at protein level).

SKOR1 Polyclonal Antibody - Protocols

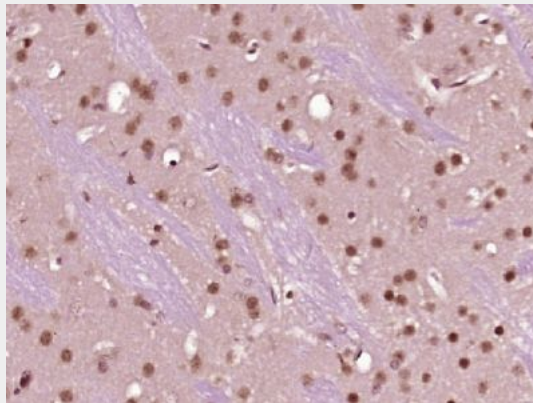
Provided below are standard protocols that you may find useful for product applications.

- [Western Blot](#)
- [Blocking Peptides](#)
- [Dot Blot](#)
- [Immunohistochemistry](#)
- [Immunofluorescence](#)
- [Immunoprecipitation](#)
- [Flow Cytometry](#)
- [Cell Culture](#)

SKOR1 Polyclonal Antibody - Images



Paraformaldehyde-fixed, paraffin embedded (rat brain tissue); Antigen retrieval by boiling in sodium citrate buffer (pH6.0) for 15min; Block endogenous peroxidase by 3% hydrogen peroxide for 20 minutes; Blocking buffer (normal goat serum) at 37°C for 30min; Antibody incubation with (SKOR1) Polyclonal Antibody, Unconjugated (bs-17508R) at 1:400 overnight at 4°C, followed by operating according to SP Kit(Rabbit) (sp-0023) instructions and DAB staining.



Paraformaldehyde-fixed, paraffin embedded (mouse brain tissue); Antigen retrieval by boiling in sodium citrate buffer (pH6.0) for 15min; Block endogenous peroxidase by 3% hydrogen peroxide for 20 minutes; Blocking buffer (normal goat serum) at 37°C for 30min; Antibody incubation with (SKOR1) Polyclonal Antibody, Unconjugated (bs-17508R) at 1:400 overnight at 4°C, followed by operating according to SP Kit(Rabbit) (sp-0023) instructions and DAB staining.