

OSBPL3 Polyclonal Antibody
Purified Rabbit Polyclonal Antibody (Pab)
Catalog # AP56727**Specification**

OSBPL3 Polyclonal Antibody - Product Information

Application	IHC-P
Primary Accession	O9H4L5
Reactivity	Rat, Dog, Bovine
Host	Rabbit
Clonality	Polyclonal
Calculated MW	101224

OSBPL3 Polyclonal Antibody - Additional Information**Gene ID** 26031**Other Names**

Oxysterol-binding protein-related protein 3, ORP-3, OSBP-related protein 3, OSBPL3, KIAA0704, ORP3, OSBP3

Format

0.01M TBS(pH7.4), 0.09% (W/V) sodium azide and 50% Glyce

Storage

Store at -20 °C for one year. Avoid repeated freeze/thaw cycles. When reconstituted in sterile pH 7.4 0.01M PBS or diluent of antibody the antibody is stable for at least two weeks at 2-4 °C.

OSBPL3 Polyclonal Antibody - Protein Information**Name** OSBPL3**Synonyms** KIAA0704, ORP3, OSBP3**Function**

Phosphoinositide-binding protein which associates with both cell and endoplasmic reticulum (ER) membranes (PubMed:16143324). Can bind to the ER membrane protein VAPA and recruit VAPA to plasma membrane sites, thus linking these intracellular compartments (PubMed:25447204). The ORP3-VAPA complex stimulates RRAS signaling which in turn attenuates integrin beta-1 (ITGB1) activation at the cell surface (PubMed:18270267, PubMed:25447204). With VAPA, may regulate ER morphology (PubMed:16143324). Has a role in regulation of the actin cytoskeleton, cell polarity and cell adhesion (PubMed:18270267). Binds to phosphoinositides with preference for PI(3,4)P2 and PI(3,4,5)P3 (PubMed:16143324). Also binds 25-hydroxycholesterol and cholesterol (PubMed:17428193).

Cellular Location

Endoplasmic reticulum membrane; Peripheral membrane protein. Cytoplasm, cytosol. Cell membrane; Peripheral membrane protein. Cell projection, filopodium tip. Nucleus membrane; Peripheral membrane protein. Note=Co-localizes with OSBPL6 at contact sites between the plasma membrane and the endoplasmic reticulum {ECO:0000250|UniProtKB:Q9DBS9}

Tissue Location

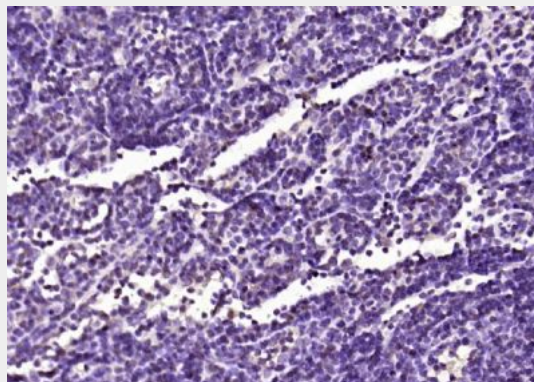
Expressed in a subset of small lymphocytes (at protein level). Expressed at high concentration in kidney, lymph node and thymus. Expressed at moderate concentration in stomach, jejunum, ileum, appendix, spleen, leukocytes, trachea, lung and thyroid gland Expressed at low concentration in whole brain, esophagus, duodenum, ileocecum, colon, skeletal muscle, bone marrow, placenta and mammary gland (PubMed:14593528). Isoform 1a, isoform 1b, isoform 1c and isoform 1d are highly expressed in brain, bone marrow, colon, kidney, lung, skeletal muscle, spleen, thymus and thyroid. Not expressed in heart and liver. Isoform 2a, isoform 2b, isoform 2c and isoform 2d are expressed in brain, bone marrow, kidney, skeletal muscle, spleen, thymus and thyroid. Not expressed in heart, liver and lung (PubMed:12590732)

OSBPL3 Polyclonal Antibody - Protocols

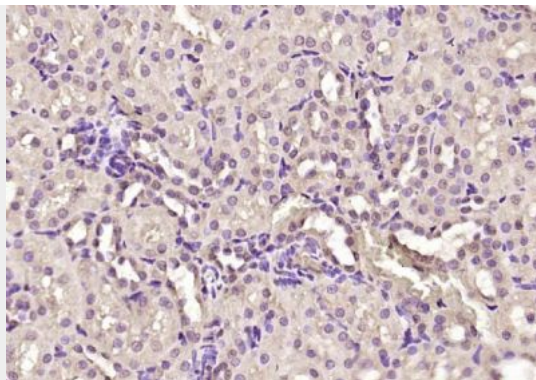
Provided below are standard protocols that you may find useful for product applications.

- [Western Blot](#)
- [Blocking Peptides](#)
- [Dot Blot](#)
- [Immunohistochemistry](#)
- [Immunofluorescence](#)
- [Immunoprecipitation](#)
- [Flow Cytometry](#)
- [Cell Culture](#)

OSBPL3 Polyclonal Antibody - Images



Paraformaldehyde-fixed, paraffin embedded (mouse bladder); Antigen retrieval by boiling in sodium citrate buffer (pH6.0) for 15min; Block endogenous peroxidase by 3% hydrogen peroxide for 20 minutes; Blocking buffer (normal goat serum) at 37°C for 30min; Antibody incubation with (OSBPL3) Polyclonal Antibody, Unconjugated (bs-17518R) at 1:200 overnight at 4°C, followed by operating according to SP Kit(Rabbit) (sp-0023) instructions and DAB staining.



Paraformaldehyde-fixed, paraffin embedded (rat kidney); Antigen retrieval by boiling in sodium citrate buffer (pH6.0) for 15min; Block endogenous peroxidase by 3% hydrogen peroxide for 20 minutes; Blocking buffer (normal goat serum) at 37°C for 30min; Antibody incubation with (OSBPL3) Polyclonal Antibody, Unconjugated (bs-17518R) at 1:200 overnight at 4°C, followed by operating according to SP Kit(Rabbit) (sp-0023) instructions and DAB staining.