

BTBD9 Antibody (Center)
Affinity Purified Rabbit Polyclonal Antibody (Pab)
Catalog # AP5672C**Specification**

BTBD9 Antibody (Center) - Product Information

Application	FC, IHC-P, WB,E
Primary Accession	Q96Q07
Other Accession	Q5POR3 , Q8C726 , A4IFG2 , NP_443125.1
Reactivity	Human
Predicted	Bovine, Mouse, Rat
Host	Rabbit
Clonality	Polyclonal
Isotype	Rabbit IgG
Calculated MW	69188
Antigen Region	237-262

BTBD9 Antibody (Center) - Additional Information**Gene ID** 114781**Other Names**

BTB/POZ domain-containing protein 9, BTBD9, KIAA1880

Target/Specificity

This BTBD9 antibody is generated from rabbits immunized with a KLH conjugated synthetic peptide between 237-262 amino acids from the Central region of human BTBD9.

Dilution

FC~~1:10~50

IHC-P~~1:50~100

WB~~1:1000

E~~Use at an assay dependent concentration.

Format

Purified polyclonal antibody supplied in PBS with 0.09% (W/V) sodium azide. This antibody is purified through a protein A column, followed by peptide affinity purification.

Storage

Maintain refrigerated at 2-8°C for up to 2 weeks. For long term storage store at -20°C in small aliquots to prevent freeze-thaw cycles.

Precautions

BTBD9 Antibody (Center) is for research use only and not for use in diagnostic or therapeutic procedures.

BTBD9 Antibody (Center) - Protein Information

Name BTBD9

Synonyms KIAA1880

Tissue Location

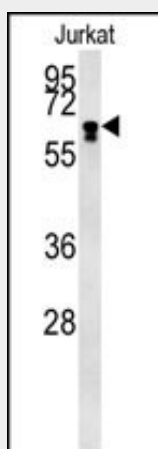
Detected in the brain (at protein level) (PubMed:22658601). Moderately expressed in all specific brain regions examined (PubMed:11572484). Expressed in the dopaminergic neurons of the substantia nigra and A11 neurons (PubMed:22658601). Highly expressed in kidney and moderately expressed in all other adult and fetal tissues (PubMed:11572484).

BTBD9 Antibody (Center) - Protocols

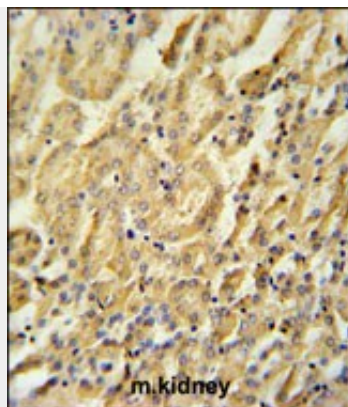
Provided below are standard protocols that you may find useful for product applications.

- [Western Blot](#)
- [Blocking Peptides](#)
- [Dot Blot](#)
- [Immunohistochemistry](#)
- [Immunofluorescence](#)
- [Immunoprecipitation](#)
- [Flow Cytometry](#)
- [Cell Culture](#)

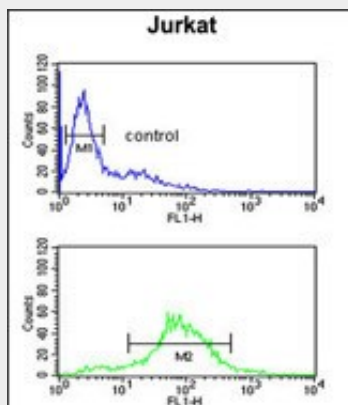
BTBD9 Antibody (Center) - Images



BTBD9 Antibody (Center) (Cat. #AP5672c) western blot analysis in Jurkat cell line lysates (15ug/lane). This demonstrates the BTBD9 antibody detected the BTBD9 protein (arrow).



BTBD9 Antibody (Center) (Cat. #AP5672c) immunohistochemistry analysis in formalin fixed and paraffin embedded mouse kidney tissue followed by peroxidase conjugation of the secondary antibody and DAB staining. This data demonstrates the use of the BTBD9 Antibody (Center) for immunohistochemistry. Clinical relevance has not been evaluated.



BTBD9 Antibody (Center) (Cat. #AP5672c) flow cytometric analysis of Jurkat cells (bottom histogram) compared to a negative control cell (top histogram). FITC-conjugated goat-anti-rabbit secondary antibodies were used for the analysis.

BTBD9 Antibody (Center) - Background

This locus encodes a BTB/POZ domain-containing protein. This domain is known to be involved in protein-protein interactions. Polymorphisms at this locus have been reported to be associated with susceptibility to Restless Legs Syndrome and may also be associated with Tourette Syndrome.

BTBD9 Antibody (Center) - References

- Riviere, J.B., et al. Arch. Neurol. 66(10):1267-1272(2009)
- Schimmelmann, B.G., et al. J Psychiatr Res 43(10):941-945(2009)
- Kemlink, D., et al. J. Med. Genet. 46(5):315-318(2009)
- Jones, L.C., et al. Genes Brain Behav. 7(5):513-514(2008)