

Otoferlin Polyclonal Antibody
Purified Rabbit Polyclonal Antibody (Pab)
Catalog # AP56737**Specification**

Otoferlin Polyclonal Antibody - Product Information

Application	IHC-P
Primary Accession	Q9HC10
Reactivity	Rat, Dog, Bovine
Host	Rabbit
Clonality	Polyclonal
Calculated MW	226753

Otoferlin Polyclonal Antibody - Additional Information**Gene ID** 9381**Other Names**

Otoferlin, Fer-1-like protein 2, OTOF, FER1L2

Format

0.01M TBS(pH7.4), 0.09% (W/V) sodium azide and 50% Glyce

Storage

Store at -20 °C for one year. Avoid repeated freeze/thaw cycles. When reconstituted in sterile pH 7.4 0.01M PBS or diluent of antibody the antibody is stable for at least two weeks at 2-4 °C.

Otoferlin Polyclonal Antibody - Protein Information**Name** OTOF**Synonyms** FER1L2**Function**

Key calcium ion sensor involved in the Ca(2+)-triggered synaptic vesicle-plasma membrane fusion and in the control of neurotransmitter release at these output synapses. Interacts in a calcium-dependent manner to the presynaptic SNARE proteins at ribbon synapses of cochlear inner hair cells (IHCs) to trigger exocytosis of neurotransmitter. Also essential to synaptic exocytosis in immature outer hair cells (OHCs). May also play a role within the recycling of endosomes (By similarity).

Cellular Location

Cytoplasmic vesicle, secretory vesicle, synaptic vesicle membrane
{ECO:0000250|UniProtKB:Q9ESF1}; Single-pass type II membrane protein
{ECO:0000250|UniProtKB:Q9ESF1}. Basolateral cell membrane
{ECO:0000250|UniProtKB:Q9ESF1}; Single-pass type II membrane protein
{ECO:0000250|UniProtKB:Q9ESF1}. Endoplasmic reticulum membrane
{ECO:0000250|UniProtKB:Q9ESF1}; Single-pass type II membrane protein

{ECO:0000250|UniProtKB:Q9ESF1}. Golgi apparatus membrane
{ECO:0000250|UniProtKB:Q9ESF1}; Single-pass type II membrane protein
{ECO:0000250|UniProtKB:Q9ESF1}. Presynaptic cell membrane
{ECO:0000250|UniProtKB:Q9ESF1}; Single-pass type II membrane protein
{ECO:0000250|UniProtKB:Q9ESF1}. Cell membrane {ECO:0000250|UniProtKB:Q9ESF1};
Single-pass type II membrane protein {ECO:0000250|UniProtKB:Q9ESF1}. Note=Detected at
basolateral cell membrane with synaptic vesicles surrounding the ribbon and at the presynaptic
plasma membrane in the inner hair cells (IHCs) at postnatal day 30 (P30). Colocalizes with GPR25
and RAB8B in inner hair cells {ECO:0000250|UniProtKB:Q9ESF1}

Tissue Location

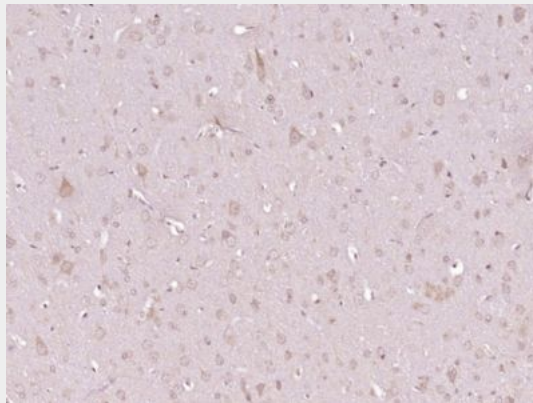
Isoform 1 and isoform 3 are found in adult brain. Isoform 2 is expressed in the fetus and in adult
brain, heart, placenta, skeletal muscle and kidney

Otoferlin Polyclonal Antibody - Protocols

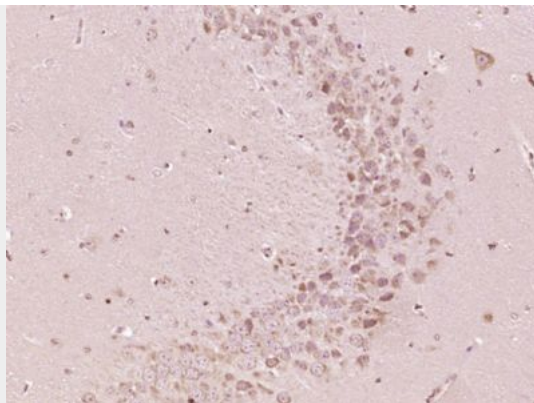
Provided below are standard protocols that you may find useful for product applications.

- [Western Blot](#)
- [Blocking Peptides](#)
- [Dot Blot](#)
- [Immunohistochemistry](#)
- [Immunofluorescence](#)
- [Immunoprecipitation](#)
- [Flow Cytometry](#)
- [Cell Culture](#)

Otoferlin Polyclonal Antibody - Images



Paraformaldehyde-fixed, paraffin embedded (Rat brain); Antigen retrieval by boiling in sodium citrate buffer (pH6.0) for 15min; Block endogenous peroxidase by 3% hydrogen peroxide for 20 minutes; Blocking buffer (normal goat serum) at 37°C for 30min; Antibody incubation with (Otoferlin) Polyclonal Antibody, Unconjugated (bs-17532R) at 1:400 overnight at 4°C, followed by operating according to SP Kit(Rabbit) (sp-0023) instructions and DAB staining.



Paraformaldehyde-fixed, paraffin embedded (Mouse brain); Antigen retrieval by boiling in sodium citrate buffer (pH6.0) for 15min; Block endogenous peroxidase by 3% hydrogen peroxide for 20 minutes; Blocking buffer (normal goat serum) at 37°C for 30min; Antibody incubation with (Otoferlin) Polyclonal Antibody, Unconjugated (bs-17532R) at 1:400 overnight at 4°C, followed by operating according to SP Kit(Rabbit) (sp-0023) instructions and DAB staining.