

SPEF1 Polyclonal Antibody
Purified Rabbit Polyclonal Antibody (Pab)
Catalog # AP56775**Specification**

SPEF1 Polyclonal Antibody - Product Information

Application	IHC-P, IHC-F, IF, ICC, E
Primary Accession	Q9Y4P9
Reactivity	Rat, Pig, Bovine
Host	Rabbit
Clonality	Polyclonal
Calculated MW	26987

SPEF1 Polyclonal Antibody - Additional Information**Gene ID** 25876**Other Names**

Sperm flagellar protein 1, SPEF1, C20orf28

Dilution

IHC-P~~N/A<br \>IHC-F~~N/A<br \>IF~~1:50~200<br \>ICC~~N/A<br \>E~~N/A

Format

0.01M TBS(pH7.4), 0.09% (W/V) sodium azide and 50% Glyce

Storage

Store at -20 °C for one year. Avoid repeated freeze/thaw cycles. When reconstituted in sterile pH 7.4 0.01M PBS or diluent of antibody the antibody is stable for at least two weeks at 2-4 °C.

SPEF1 Polyclonal Antibody - Protein Information**Name** SPEF1**Synonyms** C20orf28**Function**

Microtubule-associated protein involved in the stabilization of microtubules along the axis of migration during radial intercalation. Promotes the establishment and stabilization of an axis of microtubules required for the active migration of cells into the outer epithelium (By similarity). Microtubule-associated protein that promotes microtubule bundling and stabilizes microtubules against depolymerization in response to cold shock (By similarity). Essential for ciliary central apparatus formation which requires both its microtubule-binding and bundling activities and for ciliary localization of HYDIN and SPAG6 in ependymal cilia (By similarity). Binds actin in intestinal epithelial cells (IECs), essential for IECs survival and contributes to formation of filopodia and

lamellipodia in migrating IECs (PubMed:31473225). Regulates planar cell polarity signaling pathway and asymmetric microtubule accumulation in ciliated epithelia (By similarity).

Cellular Location

Cytoplasm. Cell projection, cilium, flagellum {ECO:0000250|UniProtKB:Q99JL1} Cytoplasm, cytoskeleton, cilium axoneme {ECO:0000250|UniProtKB:Q0IH24} Apical cell membrane. Basolateral cell membrane. Cytoplasm, cytoskeleton, stress fiber. Cell projection, microvillus. Cell projection, lamellipodium. Cell projection, filopodium. Note=Present in the tails of developing and epididymal sperm, internal to the fibrous sheath and around the outer dense fibers of the sperm flagellum. Also found at the apical tip of cilia (By similarity). Colocalizes with TJP1 and CGN at sites of cell-cell contact in intestinal epithelial cells (PubMed:31473225) {ECO:0000250|UniProtKB:Q0IH24, ECO:0000269|PubMed:31473225}

Tissue Location

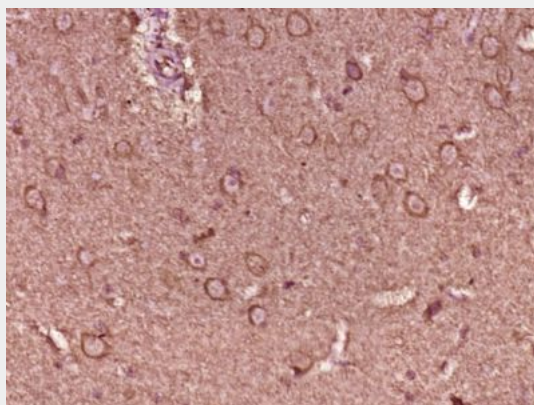
Expressed in the intestinal epithelial cells (at protein level).

SPEF1 Polyclonal Antibody - Protocols

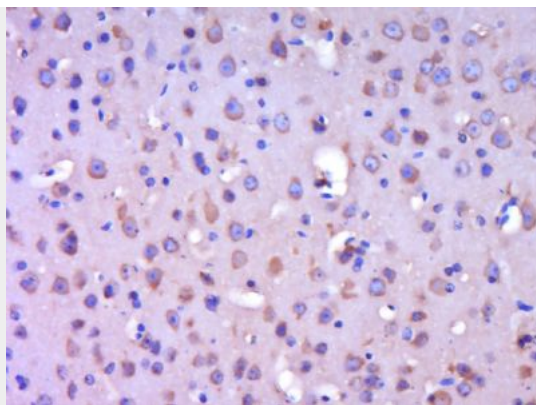
Provided below are standard protocols that you may find useful for product applications.

- [Western Blot](#)
- [Blocking Peptides](#)
- [Dot Blot](#)
- [Immunohistochemistry](#)
- [Immunofluorescence](#)
- [Immunoprecipitation](#)
- [Flow Cytometry](#)
- [Cell Culture](#)

SPEF1 Polyclonal Antibody - Images



Paraformaldehyde-fixed, paraffin embedded (Rat brain); Antigen retrieval by boiling in sodium citrate buffer (pH6.0) for 15min; Block endogenous peroxidase by 3% hydrogen peroxide for 20 minutes; Blocking buffer (normal goat serum) at 37°C for 30min; Antibody incubation with (SPEF1) Polyclonal Antibody, Unconjugated (bs-17651R) at 1:400 overnight at 4°C, followed by operating according to SP Kit(Rabbit) (sp-0023) instructions and DAB staining.



Paraformaldehyde-fixed, paraffin embedded (Mouse brain); Antigen retrieval by boiling in sodium citrate buffer (pH6.0) for 15min; Block endogenous peroxidase by 3% hydrogen peroxide for 20 minutes; Blocking buffer (normal goat serum) at 37°C for 30min; Antibody incubation with (SPEF1) Polyclonal Antibody, Unconjugated (bs-17651R) at 1:400 overnight at 4°C, followed by operating according to SP Kit(Rabbit) (sp-0023) instructions and DAB staining.