

**MMP6/MPHOSPH6 Polyclonal Antibody**  
**Purified Rabbit Polyclonal Antibody (Pab)**  
**Catalog # AP56795****Specification**

---

**MMP6/MPHOSPH6 Polyclonal Antibody - Product Information**

Application	IHC-P, IHC-F, IF, ICC
Primary Accession	<a href="#">Q99547</a>
Reactivity	Rat, Bovine
Host	Rabbit
Clonality	Polyclonal
Calculated MW	19024

**MMP6/MPHOSPH6 Polyclonal Antibody - Additional Information****Gene ID** 10200**Other Names**

M-phase phosphoprotein 6, MPHOSPH6 ([http://www.genenames.org/cgi-bin/gene\\_symbol\\_report?hgnc\\_id=7214](http://www.genenames.org/cgi-bin/gene_symbol_report?hgnc_id=7214))  
HGNC:7214

**Dilution**

IHC-P ~ N/A  
IHC-F ~ N/A  
IF ~ 1:50 ~ 200  
ICC ~ N/A

**Format**

0.01M TBS(pH7.4), 0.09% (W/V) sodium azide and 50% Glyce

**Storage**

Store at -20 °C for one year. Avoid repeated freeze/thaw cycles. When reconstituted in sterile pH 7.4 0.01M PBS or diluent of antibody the antibody is stable for at least two weeks at 2-4 °C.

**MMP6/MPHOSPH6 Polyclonal Antibody - Protein Information****Name** MPHOSPH6 ([HGNC:7214](#))**Function**

RNA-binding protein that associates with the RNA exosome complex. Involved in the 3'-processing of the 7S pre-rRNA to the mature 5.8S rRNA and play a role in recruiting the RNA exosome complex to pre-rRNA; this function may include C1D.

**Cellular Location**

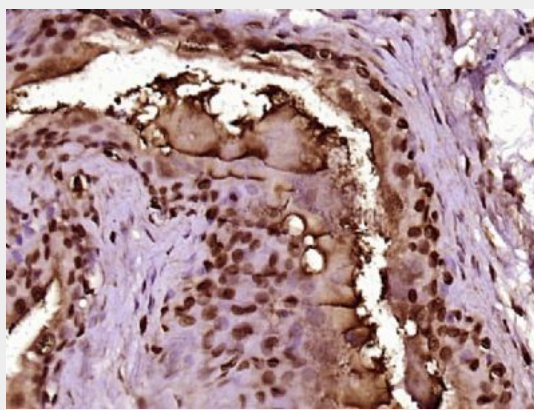
Nucleus, nucleolus. Cytoplasm. Note=Cytoplasmic in M phase

## **MMP6/MPHOSPH6 Polyclonal Antibody - Protocols**

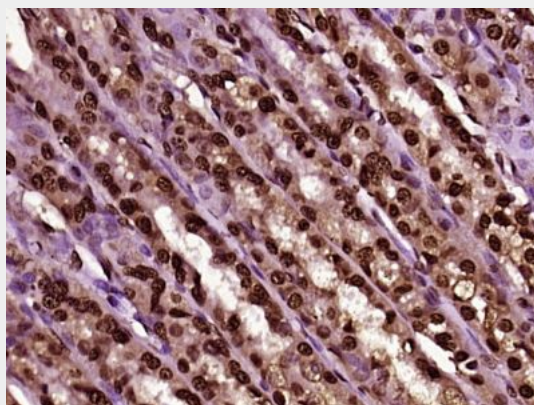
Provided below are standard protocols that you may find useful for product applications.

- [Western Blot](#)
- [Blocking Peptides](#)
- [Dot Blot](#)
- [Immunohistochemistry](#)
- [Immunofluorescence](#)
- [Immunoprecipitation](#)
- [Flow Cytometry](#)
- [Cell Culture](#)

## **MMP6/MPHOSPH6 Polyclonal Antibody - Images**



Paraformaldehyde-fixed, paraffin embedded (Rat urinary bladder); Antigen retrieval by boiling in sodium citrate buffer (pH6.0) for 15min; Block endogenous peroxidase by 3% hydrogen peroxide for 20 minutes; Blocking buffer (normal goat serum) at 37°C for 30min; Antibody incubation with (MMP6/MPHOSPH6) Polyclonal Antibody, Unconjugated (bs-17687R) at 1:400 overnight at 4°C, followed by operating according to SP Kit(Rabbit) (sp-0023) instructions and DAB staining.



Paraformaldehyde-fixed, paraffin embedded (Rat stomach); Antigen retrieval by boiling in sodium citrate buffer (pH6.0) for 15min; Block endogenous peroxidase by 3% hydrogen peroxide for 20 minutes; Blocking buffer (normal goat serum) at 37°C for 30min; Antibody incubation with (MMP6/MPHOSPH6) Polyclonal Antibody, Unconjugated (bs-17687R) at 1:400 overnight at 4°C, followed by operating according to SP Kit(Rabbit) (sp-0023) instructions and DAB staining.