

MRGPRA Polyclonal Antibody
Purified Rabbit Polyclonal Antibody (Pab)
Catalog # AP56819

Specification

MRGPRA Polyclonal Antibody - Product Information

Application	WB, IHC-P, IHC-F, IF, ICC
Primary Accession	Q7TN49
Reactivity	Rat
Host	Rabbit
Clonality	Polyclonal
Calculated MW	34 KDa
Physical State	Liquid
Immunogen	KLH conjugated synthetic peptide derived from rat MRGPRA
Epitope Specificity	1-100/304
Isotype	IgG
Purity	
affinity purified by Protein A	
Buffer	0.01M TBS (pH7.4) with 1% BSA, 0.02% Proclin300 and 50% Glycerol.
SUBCELLULAR LOCATION	Cell membrane; Multi-pass membrane protein.
SIMILARITY	Expressed in a subset of IB4-positive small diameter nociceptive dorsal root neurons.
Important Note	This product as supplied is intended for research use only, not for use in human, therapeutic or diagnostic applications.

Background Descriptions

MRGPRA, Mas-related G-protein coupled receptor member A, is an orphan receptor activated by a subset of RFamide-family neuropeptides such as FLRF-amide and FMRF-amide. It mediates its action by association with G proteins that activate a phosphatidylinositol-calcium second messenger system. Its effect is mediated by G(q) and G(11) proteins and it may regulate the function of nociceptive neurons by modulation of pain perception.

MRGPRA Polyclonal Antibody - Additional Information

Gene ID 252960

Other Names

Mas-related G-protein coupled receptor member A, Mrgpra, Mrga

Target/Specificity

Expressed in a subset of IB4-positive small diameter nociceptive dorsal root neurons.

Dilution

WB~~1:1000<br \>IHC-P~~N/A<br \><span class

="dilution_IHC-F">IHC-F~N/A<br \><span class
="dilution_IF">IF~1:50~200<br \>ICC~N/A

Storage

Store at -20 °C for one year. Avoid repeated freeze/thaw cycles. When reconstituted in sterile pH 7.4 0.01M PBS or diluent of antibody the antibody is stable for at least two weeks at 2-4 °C.

MRGPRA Polyclonal Antibody - Protein Information

Name Mrgpra

Synonyms Mrga

Function

Orphan receptor activated by a subset of RFamide-family neuropeptides such as FLRF-amide and FMRF-amide. Mediates its action by association with G proteins that activate a phosphatidylinositol- calcium second messenger system. Its effect is mediated by G(q) and G(11) proteins. May regulate the function of nociceptive neurons by modulation of pain perception (By similarity).

Cellular Location

Cell membrane; Multi-pass membrane protein.

Tissue Location

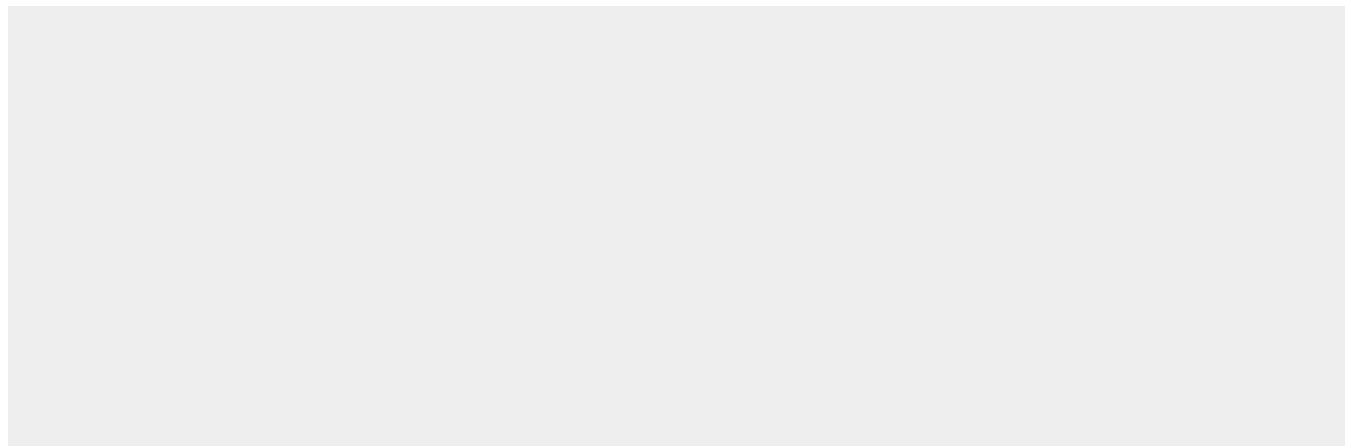
Expressed in a subset of IB4-positive small diameter nociceptive dorsal root neurons

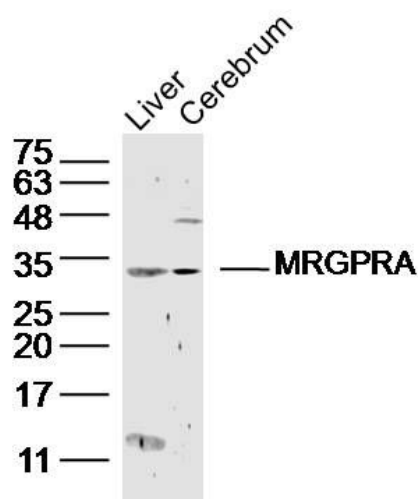
MRGPRA Polyclonal Antibody - Protocols

Provided below are standard protocols that you may find useful for product applications.

- [Western Blot](#)
- [Blocking Peptides](#)
- [Dot Blot](#)
- [Immunohistochemistry](#)
- [Immunofluorescence](#)
- [Immunoprecipitation](#)
- [Flow Cytometry](#)
- [Cell Culture](#)

MRGPRA Polyclonal Antibody - Images



**Sample:**

Liver (Mouse) Lysate at 40 ug

Cerebrum (Mouse) Lysate at 40 ug

Primary: Anti-MRGPRA (bs-17756R) at 1/300 dilution

Secondary: IRDye800CW Goat Anti-Rabbit IgG at 1/20000 dilution

Predicted band size: 34 kD

Observed band size: 34 kD