

MRPL2 Polyclonal Antibody
Purified Rabbit Polyclonal Antibody (Pab)
Catalog # AP56826**Specification**

MRPL2 Polyclonal Antibody - Product Information

| | |
|--------------------------------|---|
| Application | IHC-P, IHC-F, IF, ICC |
| Primary Accession | Q5T653 |
| Reactivity | Rat, Pig, Bovine |
| Host | Rabbit |
| Clonality | Polyclonal |
| Calculated MW | 27 KDa |
| Physical State | Liquid |
| Immunogen | KLH conjugated synthetic peptide derived from human MRPL2 |
| Epitope Specificity | 211-305/305 |
| Isotype | IgG |
| Purity | |
| affinity purified by Protein A | |
| Buffer | 0.01M TBS (pH7.4) with 1% BSA, 0.02% Proclin300 and 50% Glycerol. |
| SUBCELLULAR LOCATION | Mitochondrion. |
| SIMILARITY | Belongs to the ribosomal protein L2P family. |
| Important Note | This product as supplied is intended for research use only, not for use in human, therapeutic or diagnostic applications. |

Background Descriptions

Mammalian mitochondrial ribosomal proteins are encoded by nuclear genes and help in protein synthesis within the mitochondrion. Mitochondrial ribosomes (mitoribosomes) consist of a small 28S subunit and a large 39S subunit. They have an estimated 75% protein to rRNA composition compared to prokaryotic ribosomes, where this ratio is reversed. Another difference between mammalian mitoribosomes and prokaryotic ribosomes is that the latter contain a 5S rRNA. Among different species, the proteins comprising the mitoribosome differ greatly in sequence, and sometimes in biochemical properties, which prevents easy recognition by sequence homology. This gene encodes a 39S subunit protein that belongs to the Ecol2 ribosomal protein family. A pseudogene corresponding to this gene is found on chromosome 12q. [provided by RefSeq, Jul 2008]

MRPL2 Polyclonal Antibody - Additional Information**Gene ID** 51069**Other Names**

39S ribosomal protein L2, mitochondrial, L2mt, MRP-L2, Mitochondrial large ribosomal subunit protein uL2m, MRPL2

Dilution

IHC-P~~N/A<br \><span class
="dilution_IHC-F">IHC-F~~N/A<br \><span class
="dilution_IF">IF~~1:50~200<br \>ICC~~N/A

Format

0.01M TBS(pH7.4), 0.09% (W/V) sodium azide and 50% Glyce

Storage

Store at -20 °C for one year. Avoid repeated freeze/thaw cycles. When reconstituted in sterile pH 7.4 0.01M PBS or diluent of antibody the antibody is stable for at least two weeks at 2-4 °C.

MRPL2 Polyclonal Antibody - Protein Information

Name MRPL2

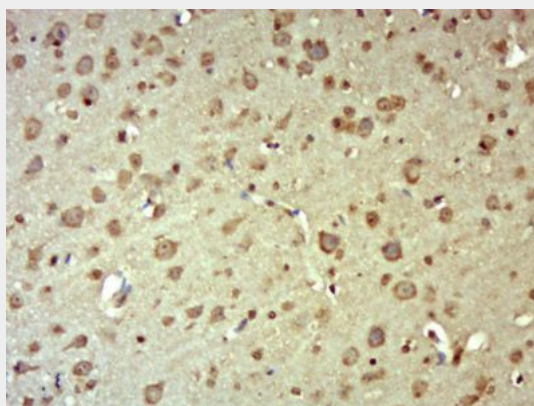
Cellular Location

Mitochondrion

MRPL2 Polyclonal Antibody - Protocols

Provided below are standard protocols that you may find useful for product applications.

- [Western Blot](#)
- [Blocking Peptides](#)
- [Dot Blot](#)
- [Immunohistochemistry](#)
- [Immunofluorescence](#)
- [Immunoprecipitation](#)
- [Flow Cytometry](#)
- [Cell Culture](#)

MRPL2 Polyclonal Antibody - Images

Paraformaldehyde-fixed, paraffin embedded (Mouse brain); Antigen retrieval by boiling in sodium citrate buffer (pH6.0) for 15min; Block endogenous peroxidase by 3% hydrogen peroxide for 20 minutes; Blocking buffer (normal goat serum) at 37°C for 30min; Antibody incubation with (MRPL2) Polyclonal Antibody, Unconjugated (bs-17776R) at 1:400 overnight at 4°C, followed by operating according to SP Kit(Rabbit) (sp-0023) instructions and DAB staining.