

MSL1v1/CENP36 Polyclonal Antibody
Purified Rabbit Polyclonal Antibody (Pab)
Catalog # AP56869**Specification****MSL1v1/CENP36 Polyclonal Antibody - Product Information**

Application	IHC-P, IHC-F, IF, ICC, E
Primary Accession	Q7Z3B3
Reactivity	Rat, Pig, Dog, Bovine
Host	Rabbit
Clonality	Polyclonal
Calculated MW	120966

MSL1v1/CENP36 Polyclonal Antibody - Additional Information**Gene ID** 284058**Other Names**

KAT8 regulatory NSL complex subunit 1, MLL1/MLL complex subunit KANSL1, MSL1 homolog 1, hMSL1v1, NSL complex protein NSL1, Non-specific lethal 1 homolog, KANSL1, CENP-36, KIAA1267, MSL1V1, NSL1

Dilution

IHC-P ~ ~ N/A
IHC-F ~ ~ N/A
IF ~ ~ 1:50 ~ 200
ICC ~ ~ N/A
E ~ ~ N/A

Format

0.01M TBS(pH7.4), 0.09% (W/V) sodium azide and 50% Glyce

Storage

Store at -20 °C for one year. Avoid repeated freeze/thaw cycles. When reconstituted in sterile pH 7.4 0.01M PBS or diluent of antibody the antibody is stable for at least two weeks at 2-4 °C.

MSL1v1/CENP36 Polyclonal Antibody - Protein Information**Name** KANSL1**Synonyms** CENP-36, KIAA1267, MSL1V1, NSL1**Function**

Non-catalytic component of the NSL histone acetyltransferase complex, a multiprotein complex that mediates histone H4 acetylation at 'Lys-5'- and 'Lys-8' (H4K5ac and H4K8ac) at transcription start sites and promotes transcription initiation (PubMed: [20018852](http://www.uniprot.org/citations/20018852), PubMed: [22547026](http://www.uniprot.org/citations/22547026), PubMed: [33657400](http://www.uniprot.org/citations/33657400)). The NSL

complex also acts as a regulator of gene expression in mitochondria (PubMed:27768893). In addition to its role in transcription, KANSL1 also plays an essential role in spindle assembly during mitosis (PubMed:26243146). Associates with microtubule ends and contributes to microtubule stability (PubMed:26243146).

Cellular Location

Nucleus. Chromosome, centromere, kinetochore. Mitochondrion. Cytoplasm, cytoskeleton, spindle pole. Note=Concentrated in the nucleus during interphase, localizes to the spindle poles and pericentriolar region during prometaphase and metaphase, and remains associated with the spindle poles throughout anaphase.

Tissue Location

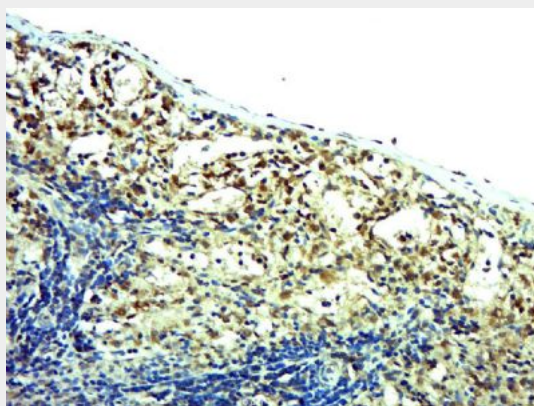
Expressed in the brain.

MSL1v1/CENP36 Polyclonal Antibody - Protocols

Provided below are standard protocols that you may find useful for product applications.

- [Western Blot](#)
- [Blocking Peptides](#)
- [Dot Blot](#)
- [Immunohistochemistry](#)
- [Immunofluorescence](#)
- [Immunoprecipitation](#)
- [Flow Cytometry](#)
- [Cell Culture](#)

MSL1v1/CENP36 Polyclonal Antibody - Images



Paraformaldehyde-fixed, paraffin embedded (Rat spleen); Antigen retrieval by boiling in sodium citrate buffer (pH6.0) for 15min; Block endogenous peroxidase by 3% hydrogen peroxide for 20 minutes; Blocking buffer (normal goat serum) at 37°C for 30min; Antibody incubation with (MSL1v1) Polyclonal Antibody, Unconjugated (bs-17857R) at 1:500 overnight at 4°C, followed by a conjugated secondary (sp-0023) for 20 minutes and DAB staining.