

MSL3L1 Polyclonal Antibody
Purified Rabbit Polyclonal Antibody (Pab)
Catalog # AP56870**Specification****MSL3L1 Polyclonal Antibody - Product Information**

Application	WB, IHC-P, IHC-F, IF, ICC, E
Primary Accession	Q8N5Y2
Reactivity	Pig, Dog, Bovine
Host	Rabbit
Clonality	Polyclonal
Calculated MW	60 KDa
Physical State	Liquid
Immunogen	KLH conjugated synthetic peptide derived from human MSL3L1
Epitope Specificity	1-100/521
Isotype	IgG
Purity	
affinity purified by Protein A	
Buffer	0.01M TBS (pH7.4) with 1% BSA, 0.02% Proclin300 and 50% Glycerol.
SUBCELLULAR LOCATION	Nucleus
SIMILARITY	Contains 1 chromo domain. Contains 1 MRG domain.
SUBUNIT	Component the MSL histone acetyltransferase complex at least composed of the MOF/KAT8, MSL1/hampin, MSL2 and MSL3. Interacts (via the MRG domain) with MSL1.
Important Note	This product as supplied is intended for research use only, not for use in human, therapeutic or diagnostic applications.

Background Descriptions

This gene encodes a nuclear protein that is similar to the product of the Drosophila male-specific lethal-3 gene. The Drosophila protein plays a critical role in a dosage-compensation pathway, which equalizes X-linked gene expression in males and females. Thus, the human protein is thought to play a similar function in chromatin remodeling and transcriptional regulation, and it has been found as part of a complex that is responsible for histone H4 lysine-16 acetylation. This gene can undergo X inactivation. Alternative splicing results in multiple transcript variants. Related pseudogenes have been identified on chromosomes 2, 7 and 8. [provided by RefSeq, Jul 2010]

MSL3L1 Polyclonal Antibody - Additional Information**Gene ID** 10943**Other Names**

Male-specific lethal 3 homolog, Male-specific lethal-3 homolog 1, Male-specific lethal-3 protein-like

1, MSL3-like 1, MSL3, MSL3L1

Target/Specificity

Expressed in many tissues including liver, pancreas, heart, lung, kidney, skeletal muscle, brain, and placenta, with highest expression in skeletal muscle and heart.

Dilution

WB~~1:1000
IHC-P~~N/A
IHC-F~~N/A
IF~~1:50~200
ICC~~N/A
E~~N/A

Storage

Store at -20 °C for one year. Avoid repeated freeze/thaw cycles. When reconstituted in sterile pH 7.4 0.01M PBS or diluent of antibody the antibody is stable for at least two weeks at 2-4 °C.

MSL3L1 Polyclonal Antibody - Protein Information

Name MSL3 {ECO:0000303|PubMed:16227571, ECO:0000312|HGNC:HGNC:7370}

Function

Non-catalytic component of the MSL histone acetyltransferase complex, a multiprotein complex that mediates the majority of histone H4 acetylation at 'Lys-16' (H4K16ac), an epigenetic mark that prevents chromatin compaction (PubMed: [16227571](http://www.uniprot.org/citations/16227571), PubMed: [16543150](http://www.uniprot.org/citations/16543150), PubMed: [20018852](http://www.uniprot.org/citations/20018852), PubMed: [20657587](http://www.uniprot.org/citations/20657587), PubMed: [20943666](http://www.uniprot.org/citations/20943666), PubMed: [21217699](http://www.uniprot.org/citations/21217699), PubMed: [30224647](http://www.uniprot.org/citations/30224647), PubMed: [33837287](http://www.uniprot.org/citations/33837287)). The MSL complex is required for chromosome stability and genome integrity by maintaining homeostatic levels of H4K16ac (PubMed: [33837287](http://www.uniprot.org/citations/33837287)). The MSL complex is also involved in gene dosage by promoting up-regulation of genes expressed by the X chromosome (By similarity). X up-regulation is required to compensate for autosomal biallelic expression (By similarity). The MSL complex also participates in gene dosage compensation by promoting expression of Tsix non-coding RNA (By similarity). Acts as a histone reader that specifically recognizes and binds histone H4 monomethylated at 'Lys-20' (H4K20Me1) in a DNA-dependent manner and is proposed to be involved in chromosomal targeting of the MSL complex (PubMed: [20657587](http://www.uniprot.org/citations/20657587), PubMed: [20943666](http://www.uniprot.org/citations/20943666)). May play a role X inactivation in females (PubMed: [21217699](http://www.uniprot.org/citations/21217699)).

Cellular Location

Nucleus.

Tissue Location

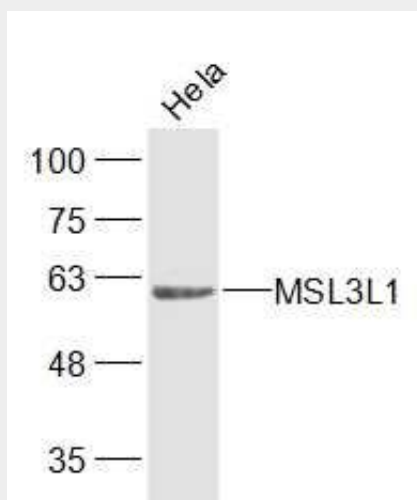
Expressed in many tissues including liver, pancreas, heart, lung, kidney, skeletal muscle, brain, and placenta, with highest expression in skeletal muscle and heart

MSL3L1 Polyclonal Antibody - Protocols

Provided below are standard protocols that you may find useful for product applications.

- [Western Blot](#)
- [Blocking Peptides](#)
- [Dot Blot](#)
- [Immunohistochemistry](#)
- [Immunofluorescence](#)
- [Immunoprecipitation](#)
- [Flow Cytometry](#)
- [Cell Culture](#)

MSL3L1 Polyclonal Antibody - Images



Sample:

HeLa(Human) Cell Lysate at 30 ug

Primary: Anti-MSL3L1 (bs-17858R) at 1/300 dilution

Secondary: IRDye800CW Goat Anti-Rabbit IgG at 1/20000 dilution

Predicted band size: 60 kD

Observed band size: 60 kD