

MTMR12 Polyclonal Antibody
Purified Rabbit Polyclonal Antibody (Pab)
Catalog # AP56883**Specification****MTMR12 Polyclonal Antibody - Product Information**

Application	IHC-P, IHC-F, IF, ICC, E
Primary Accession	O9C0I1
Reactivity	Rat, Cat
Host	Rabbit
Clonality	Polyclonal
Calculated MW	86 KDa
Physical State	Liquid
Immunogen	KLH conjugated synthetic peptide derived from human MTMR12
Epitope Specificity	451-550/747
Isotype	IgG
Purity	
affinity purified by Protein A	
Buffer	0.01M TBS (pH7.4) with 1% BSA, 0.02% Proclin300 and 50% Glycerol.
SUBCELLULAR LOCATION	Cytoplasm. Localizes to punctate vesicles when associated with MTM1.
SIMILARITY	Belongs to the protein-tyrosine phosphatase family. Non-receptor class myotubularin subfamily. Contains 1 myotubularin phosphatase domain.
Important Note	This product as supplied is intended for research use only, not for use in human, therapeutic or diagnostic applications.

Background Descriptions

Phosphatidylinositide 3-kinase-derived membrane-anchored phosphatidylinositides, such as phosphatidylinositol 3-phosphate (PtdIns(3)P), regulate diverse cellular processes. The protein encoded by this gene functions as an adaptor subunit in a complex with an active PtdIns(3)P 3-phosphatase. Alternatively spliced transcript variants have been identified, but their biological validity has not been determined. [provided by RefSeq, Jul 2008]

MTMR12 Polyclonal Antibody - Additional Information**Gene ID** 54545**Other Names**

Myotubularin-related protein 12, Inactive phosphatidylinositol 3-phosphatase 12, Phosphatidylinositol 3 phosphate 3-phosphatase adapter subunit, 3-PAP, 3-phosphatase adapter protein, MTMR12, KIAA1682, PIP3AP

Target/Specificity

Ubiquitous with prominent expression in brain, heart, kidney, placenta, and lung.

Dilution

IHC-P ~ ~ N/A
IHC-F ~ ~ N/A
IF ~ ~ 1:50 ~ 200
ICC ~ ~ N/A
E ~ ~ N/A

Format

0.01M TBS(pH7.4), 0.09% (W/V) sodium azide and 50% Glyce

Storage

Store at -20 °C for one year. Avoid repeated freeze/thaw cycles. When reconstituted in sterile pH 7.4 0.01M PBS or diluent of antibody the antibody is stable for at least two weeks at 2-4 °C.

MTMR12 Polyclonal Antibody - Protein Information

Name MTMR12

Synonyms KIAA1682, PIP3AP

Function

Acts as an adapter for the myotubularin-related phosphatases (PubMed:[11504939](http://www.uniprot.org/citations/11504939), PubMed:[12847286](http://www.uniprot.org/citations/12847286), PubMed:[23818870](http://www.uniprot.org/citations/23818870)). Regulates phosphatase MTM1 protein stability and possibly its intracellular location (PubMed:[23818870](http://www.uniprot.org/citations/23818870)). By stabilizing MTM1 protein levels, required for skeletal muscle maintenance but not for myogenesis (By similarity).

Cellular Location

Cytoplasm. Sarcoplasmic reticulum {ECO:0000250|UniProtKB:Q80TA6}. Cytoplasm, myofibril, sarcomere {ECO:0000250|UniProtKB:Q80TA6}. Note=Localizes to punctate vesicles when associated with MTM1 (PubMed:12847286) Localizes to triads, a structure formed by a T tubule and two sarcoplasmic reticulum terminal cisterna (By similarity). In skeletal muscles, co-localizes with MTM1 in the sarcomere (By similarity) Partially localizes to the sarcoplasmic reticulum in skeletal muscles (By similarity). {ECO:0000250|UniProtKB:Q80TA6, ECO:0000269|PubMed:12847286}

Tissue Location

Expressed in skeletal muscles (at protein level) (PubMed:23818870). Ubiquitous with prominent expression in brain, heart, kidney, placenta, and lung (PubMed:11504939)

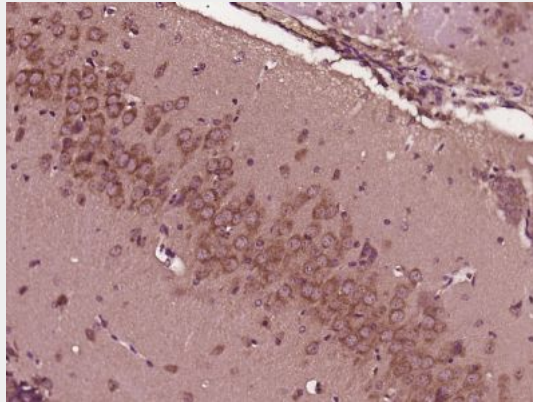
MTMR12 Polyclonal Antibody - Protocols

Provided below are standard protocols that you may find useful for product applications.

- [Western Blot](#)
- [Blocking Peptides](#)
- [Dot Blot](#)
- [Immunohistochemistry](#)
- [Immunofluorescence](#)
- [Immunoprecipitation](#)
- [Flow Cytometry](#)

- [Cell Culture](#)

MTMR12 Polyclonal Antibody - Images



Paraformaldehyde-fixed, paraffin embedded (Mouse brain); Antigen retrieval by boiling in sodium citrate buffer (pH6.0) for 15min; Block endogenous peroxidase by 3% hydrogen peroxide for 20 minutes; Blocking buffer (normal goat serum) at 37°C for 30min; Antibody incubation with (MTMR12) Polyclonal Antibody, Unconjugated (bs-17884R) at 1:500 overnight at 4°C, followed by a conjugated secondary (sp-0023) for 20 minutes and DAB staining.