

**MTX1 Polyclonal Antibody**  
**Purified Rabbit Polyclonal Antibody (Pab)**  
**Catalog # AP56889****Specification****MTX1 Polyclonal Antibody - Product Information**

Application	WB, IHC-P, IHC-F, IF, ICC, E
Primary Accession	<a href="#">Q13505</a>
Reactivity	Dog, Bovine
Host	Rabbit
Clonality	Polyclonal
Calculated MW	51 KDa
Physical State	Liquid
Immunogen	KLH conjugated synthetic peptide derived from human MTX1
Epitope Specificity	301-400/466
Isotype	IgG
<b>Purity</b>	
affinity purified by Protein A	
Buffer	0.01M TBS (pH7.4) with 1% BSA, 0.02% Proclin300 and 50% Glycerol.
SUBCELLULAR LOCATION	Membrane. Mitochondrion outer membrane.
SIMILARITY	Belongs to the metaxin family.
Important Note	This product as supplied is intended for research use only, not for use in human, therapeutic or diagnostic applications.

**Background Descriptions**

Metaxin 1 is a 317 amino acid member of the Metaxin protein family. Localized to the mitochondrion outer membrane, Metaxin 1 is involved in the transport of proteins into the mitochondrion. Metaxin 1 is also believed to be essential for embryonic development. Metaxin 1 has been found to interact with other Metaxin family members, including Metaxin 2. Although ubiquitously expressed, highest levels of Metaxin 1 are present in kidney. The gene that encodes Metaxin 1 maps to human chromosome 1, which is the largest human chromosome, spanning about 260 million base pairs and making up 8% of the human genome.

**MTX1 Polyclonal Antibody - Additional Information****Gene ID** 4580**Other Names**

Metaxin-1, Mitochondrial outer membrane import complex protein 1, MTX1, MTX, MTXN

**Dilution**

<span class = "dilution\_WB">WB~~1:1000</span><br \><span class = "dilution\_IHC-P">IHC-P~~N/A</span><br \><span class = "dilution\_IHC-F">IHC-F~~N/A</span><br \><span class = "dilution\_IF">IF~~1:50~200</span><br \><span class = "dilution\_ICC">ICC~~N/A</span><br \>

\><span class = "dilution\_E">E~~N/A</span>

**Storage**

Store at -20 °C for one year. Avoid repeated freeze/thaw cycles. When reconstituted in sterile pH 7.4 0.01M PBS or diluent of antibody the antibody is stable for at least two weeks at 2-4 °C.

**MTX1 Polyclonal Antibody - Protein Information**

**Name** MTX1

**Synonyms** MTX, MTXN

**Function**

Involved in transport of proteins into the mitochondrion. Essential for embryonic development (By similarity).

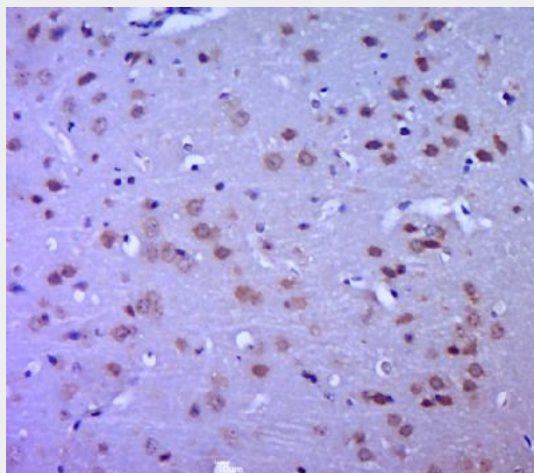
**Cellular Location**

Membrane; Single-pass type I membrane protein. Mitochondrion outer membrane

**MTX1 Polyclonal Antibody - Protocols**

Provided below are standard protocols that you may find useful for product applications.

- [Western Blot](#)
- [Blocking Peptides](#)
- [Dot Blot](#)
- [Immunohistochemistry](#)
- [Immunofluorescence](#)
- [Immunoprecipitation](#)
- [Flow Cytometry](#)
- [Cell Culture](#)

**MTX1 Polyclonal Antibody - Images**

Paraformaldehyde-fixed, paraffin embedded (mouse brain tissue); Antigen retrieval by boiling in sodium citrate buffer (pH6.0) for 15min; Block endogenous peroxidase by 3% hydrogen peroxide for 20 minutes; Blocking buffer (normal goat serum) at 37°C for 30min; Antibody incubation with

(MTX1) Polyclonal Antibody, Unconjugated (bs-17897R) at 1:400 overnight at 4°C, followed by a conjugated secondary (sp-0023) for 20 minutes and DAB staining.