

MTX3 Polyclonal Antibody
Purified Rabbit Polyclonal Antibody (Pab)
Catalog # AP56890**Specification**

MTX3 Polyclonal Antibody - Product Information

Application	IHC-P, IHC-F, IF, ICC, E
Primary Accession	Q5HYI7
Reactivity	Rat, Pig, Dog, Bovine
Host	Rabbit
Clonality	Polyclonal
Calculated MW	36 KDa
Physical State	Liquid
Immunogen	KLH conjugated synthetic peptide derived from human MTX3
Epitope Specificity	201-300/312
Isotype	IgG
Purity	
affinity purified by Protein A	
Buffer	0.01M TBS (pH7.4) with 1% BSA, 0.02% Proclin300 and 50% Glycerol.
SUBCELLULAR LOCATION	Mitochondrion outer membrane
SIMILARITY	Belongs to the metaxin family.
Important Note	This product as supplied is intended for research use only, not for use in human, therapeutic or diagnostic applications.

MTX3 Polyclonal Antibody - Additional Information**Gene ID** 345778**Other Names**

Metaxin-3, MTX3

Dilution

IHC-P~~N/A
IHC-F~~N/A
IF~~1:50~200
ICC~~N/A
E~~N/A

Format

0.01M TBS(pH7.4), 0.09% (W/V) sodium azide and 50% Glyce

Storage

Store at -20 °C for one year. Avoid repeated freeze/thaw cycles. When reconstituted in sterile pH 7.4 0.01M PBS or diluent of antibody the antibody is stable for at least two weeks at 2-4 °C.

MTX3 Polyclonal Antibody - Protein Information

Name MTX3

Function

Could function in transport of proteins into the mitochondrion.

Cellular Location

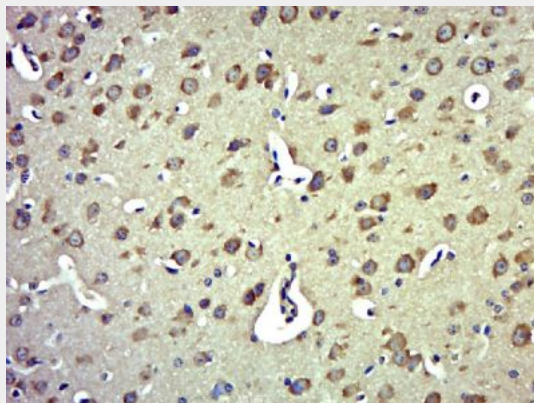
Mitochondrion. Mitochondrion outer membrane

MTX3 Polyclonal Antibody - Protocols

Provided below are standard protocols that you may find useful for product applications.

- [Western Blot](#)
- [Blocking Peptides](#)
- [Dot Blot](#)
- [Immunohistochemistry](#)
- [Immunofluorescence](#)
- [Immunoprecipitation](#)
- [Flow Cytometry](#)
- [Cell Culture](#)

MTX3 Polyclonal Antibody - Images



Paraformaldehyde-fixed, paraffin embedded (Mouse brain); Antigen retrieval by boiling in sodium citrate buffer (pH6.0) for 15min; Block endogenous peroxidase by 3% hydrogen peroxide for 20 minutes; Blocking buffer (normal goat serum) at 37°C for 30min; Antibody incubation with (MTX3) Polyclonal Antibody, Unconjugated (bs-17899R) at 1:500 overnight at 4°C, followed by a conjugated secondary (sp-0023) for 20 minutes and DAB staining.