

CFHR5 Antibody (Center)
Affinity Purified Rabbit Polyclonal Antibody (Pab)
Catalog # AP5689C**Specification**

CFHR5 Antibody (Center) - Product Information

Application	FC, IHC-P, WB,E
Primary Accession	O9BXR6
Other Accession	NP_110414.1
Reactivity	Human
Host	Rabbit
Clonality	Polyclonal
Isotype	Rabbit IgG
Calculated MW	64419
Antigen Region	203-231

CFHR5 Antibody (Center) - Additional Information**Gene ID** 81494**Other Names**

Complement factor H-related protein 5, FHR-5, CFHR5, CFHL5, FHR5

Target/Specificity

This CFHR5 antibody is generated from rabbits immunized with a KLH conjugated synthetic peptide between 203-231 amino acids from the Central region of human CFHR5.

Dilution

FC~~1:10~50

IHC-P~~1:100

WB~~1:1000

E~~Use at an assay dependent concentration.

Format

Purified polyclonal antibody supplied in PBS with 0.09% (W/V) sodium azide. This antibody is purified through a protein A column, followed by peptide affinity purification.

Storage

Maintain refrigerated at 2-8°C for up to 2 weeks. For long term storage store at -20°C in small aliquots to prevent freeze-thaw cycles.

Precautions

CFHR5 Antibody (Center) is for research use only and not for use in diagnostic or therapeutic procedures.

CFHR5 Antibody (Center) - Protein Information**Name** CFHR5

Synonyms CFHL5, FHR5

Function Involved in complement regulation. The dimerized forms have avidity for tissue-bound complement fragments and efficiently compete with the physiological complement inhibitor CFH.

Cellular Location

Secreted.

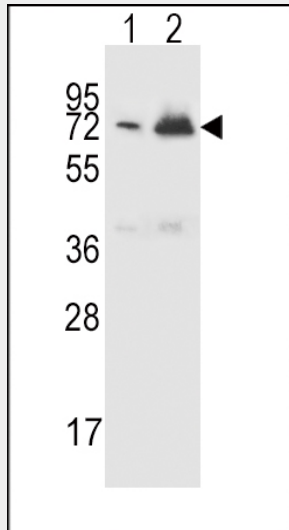
Tissue Location

Expressed by the liver and secreted in plasma.

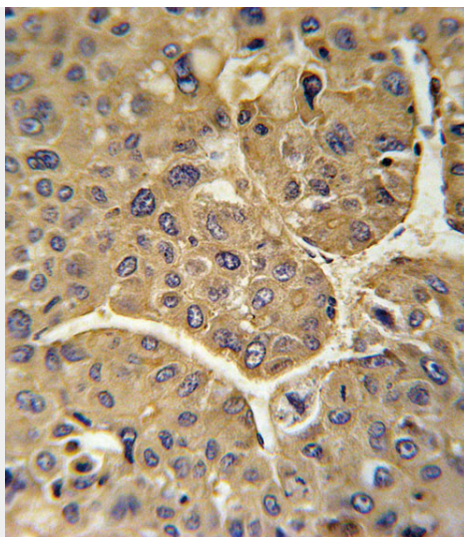
CFHR5 Antibody (Center) - Protocols

Provided below are standard protocols that you may find useful for product applications.

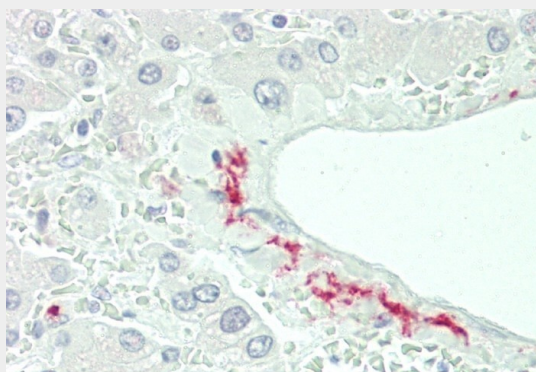
- [Western Blot](#)
- [Blocking Peptides](#)
- [Dot Blot](#)
- [Immunohistochemistry](#)
- [Immunofluorescence](#)
- [Immunoprecipitation](#)
- [Flow Cytometry](#)
- [Cell Culture](#)

CFHR5 Antibody (Center) - Images

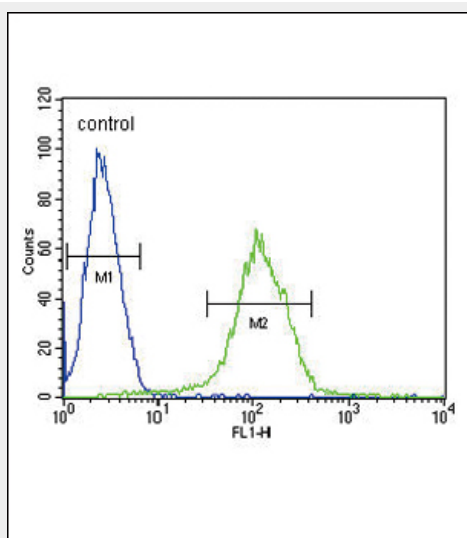
CFHR5 Antibody (Center) (Cat. #AP5689c) western blot analysis in CEM(lane 1),K562(lane 2) cell line lysates (15ug/lane).This demonstrates the CFHR5 antibody detected the CFHR5 protein (arrow).



CFHR5 Antibody (Center) (Cat. #AP5689c) immunohistochemistry analysis in formalin fixed and paraffin embedded human hepatocarcinoma followed by peroxidase conjugation of the secondary antibody and DAB staining. This data demonstrates the use of the CFHR5 Antibody (Center) for immunohistochemistry. Clinical relevance has not been evaluated.



Formalin-fixed and paraffin-embedded H.liver tissue reacted with CFHR5 Antibody (Center) (Cat#AP5689c).



CFHR5 Antibody (Center) (Cat. #AP5689c) flow cytometric analysis of CEM cells (right histogram) compared to a negative control cell (left histogram).FITC-conjugated goat-anti-rabbit secondary

antibodies were used for the analysis.

CFHR5 Antibody (Center) - Background

CFHR5 is a member of a small complement factor H (CFH) gene cluster on chromosome 1. Each member of this gene family contains multiple short consensus repeats (SCRs) typical of regulators of complement activation. The protein encoded by this gene has nine SCRs with the first two repeats having heparin binding properties, a region within repeats 5-7 having heparin binding and C reactive protein binding properties, and the C-terminal repeats being similar to a complement component 3 b (C3b) binding domain. This protein co-localizes with C3, binds C3b in a dose-dependent manner, and is recruited to tissues damaged by C-reactive protein. Allelic variations in this gene have been associated, but not causally linked, with two different forms of kidney disease: membranoproliferative glomerulonephritis type II (MPGNII) and hemolytic uraemic syndrome (HUS). [provided by RefSeq].

CFHR5 Antibody (Center) - References

McRae, J.L., et al. *Genetica* 114(2):157-161(2002)
Murphy, B., et al. *Am. J. Kidney Dis.* 39(1):24-27(2002)
Narkio-Makela, M., et al. *Clin. Immunol.* 100(1):118-126(2001)
McRae, J.L., et al. *J. Biol. Chem.* 276(9):6747-6754(2001)