

Contactin 6 Polyclonal Antibody
Purified Rabbit Polyclonal Antibody (Pab)
Catalog # AP56919**Specification**

Contactin 6 Polyclonal Antibody - Product Information

Application	IHC-P, IHC-F, IF, E
Primary Accession	Q9UQ52
Reactivity	Rat, Pig, Dog, Bovine
Host	Rabbit
Clonality	Polyclonal
Calculated MW	109 KDa
Physical State	Liquid
Immunogen	KLH conjugated synthetic peptide derived from human NB3
Epitope Specificity	85-200/1028
Isotype	IgG
Purity	
affinity purified by Protein A	
Buffer	0.01M TBS (pH7.4) with 1% BSA, 0.02% Proclin300 and 50% Glycerol.
SUBCELLULAR LOCATION	Cell membrane; Lipid-anchor, GPI-anchor (By similarity).
SIMILARITY	Belongs to the immunoglobulin superfamily. Contactin family. Contains 4 fibronectin type-III domains. Contains 6 Ig-like C2-type (immunoglobulin-like) domains.
SUBUNIT	Belongs to the immunoglobulin superfamily. Contactin family. Contains 4 fibronectin type-III domains. Contains 6 Ig-like C2-type (immunoglobulin-like) domains.
Important Note	This product as supplied is intended for research use only, not for use in human, therapeutic or diagnostic applications.

Background Descriptions

Contactin 6 is a member of the immunoglobulin superfamily. It is a glycosylphosphatidylinositol (GPI)-anchored neuronal membrane protein which functions as a cell adhesion molecule. It may play a role in the formation of axon connections in the developing nervous system.

Contactin 6 Polyclonal Antibody - Additional Information**Gene ID** 27255**Other Names**

Contactin-6, Neural recognition molecule NB-3, hNB-3, CNTN6

Target/Specificity

Expressed in nervous system. Highly expressed in cerebellum. Expressed at intermediate level in thalamus, subthalamic nucleus. Weakly expressed in corpus callosum, caudate nucleus and spinal cord.

Dilution

IHC-P~~N/A
IHC-F~~N/A
IF~~1:50~200
E~~N/A

Format

0.01M TBS(pH7.4), 0.09% (W/V) sodium azide and 50% Glyce

Storage

Store at -20 °C for one year. Avoid repeated freeze/thaw cycles. When reconstituted in sterile pH 7.4 0.01M PBS or diluent of antibody the antibody is stable for at least two weeks at 2-4 °C.

Contactin 6 Polyclonal Antibody - Protein Information

Name CNTN6

Function

Contactins mediate cell surface interactions during nervous system development. Participates in oligodendrocytes generation by acting as a ligand of NOTCH1. Its association with NOTCH1 promotes NOTCH1 activation through the released notch intracellular domain (NICD) and subsequent translocation to the nucleus. Involved in motor coordination (By similarity).

Cellular Location

Cell membrane; Lipid-anchor, GPI- anchor

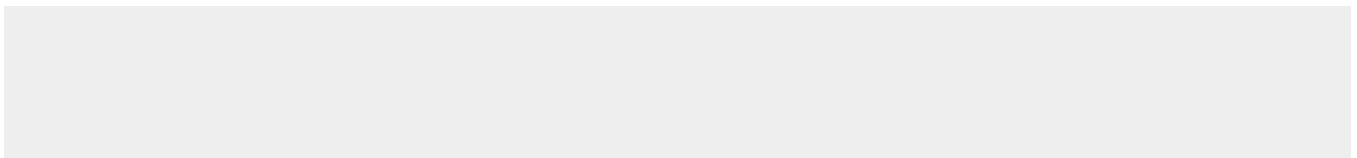
Tissue Location

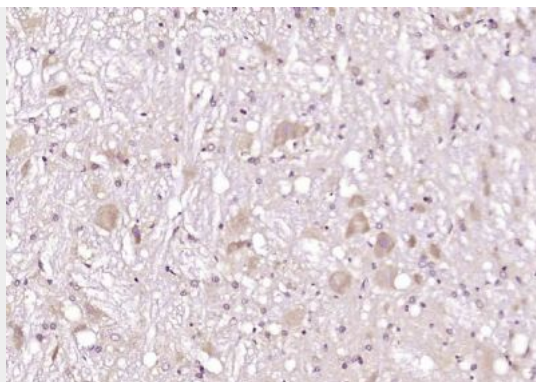
Expressed in nervous system. Highly expressed in cerebellum. Expressed at intermediate level in thalamus, subthalamic nucleus. Weakly expressed in corpus callosum, caudate nucleus and spinal cord

Contactin 6 Polyclonal Antibody - Protocols

Provided below are standard protocols that you may find useful for product applications.

- [Western Blot](#)
- [Blocking Peptides](#)
- [Dot Blot](#)
- [Immunohistochemistry](#)
- [Immunofluorescence](#)
- [Immunoprecipitation](#)
- [Flow Cytometry](#)
- [Cell Culture](#)

Contactin 6 Polyclonal Antibody - Images



Paraformaldehyde-fixed, paraffin embedded (rat brain); Antigen retrieval by boiling in sodium citrate buffer (pH6.0) for 15min; Block endogenous peroxidase by 3% hydrogen peroxide for 20 minutes; Blocking buffer (normal goat serum) at 37°C for 30min; Antibody incubation with (Contactin 6) Polyclonal Antibody, Unconjugated (bs-1797R) at 1:200 overnight at 4°C, followed by operating according to SP Kit(Rabbit) (sp-0023) instructions and DAB staining.