

**Glutamate receptor 3 Polyclonal Antibody**  
**Purified Rabbit Polyclonal Antibody (Pab)**  
**Catalog # AP56920****Specification**

---

**Glutamate receptor 3 Polyclonal Antibody - Product Information**

Application	IHC-P
Primary Accession	<a href="#">P42263</a>
Reactivity	Rat, Pig, Dog, Bovine
Host	Rabbit
Clonality	Polyclonal
Calculated MW	101157

**Glutamate receptor 3 Polyclonal Antibody - Additional Information****Gene ID** 2892**Other Names**

Glutamate receptor 3, GluR-3, AMPA-selective glutamate receptor 3, GluR-C, GluR-K3, Glutamate receptor ionotropic, AMPA 3, GluA3, GRIA3, GLUR3, GLURC

**Format**

0.01M TBS(pH7.4), 0.09% (W/V) sodium azide and 50% Glyce

**Storage**

Store at -20 °C for one year. Avoid repeated freeze/thaw cycles. When reconstituted in sterile pH 7.4 0.01M PBS or diluent of antibody the antibody is stable for at least two weeks at 2-4 °C.

**Glutamate receptor 3 Polyclonal Antibody - Protein Information****Name** GRIA3**Synonyms** GLUR3, GLURC**Function**

Receptor for glutamate that functions as a ligand-gated ion channel in the central nervous system and plays an important role in excitatory synaptic transmission. L-glutamate acts as an excitatory neurotransmitter at many synapses in the central nervous system. Binding of the excitatory neurotransmitter L-glutamate induces a conformation change, leading to the opening of the cation channel, and thereby converts the chemical signal to an electrical impulse. The receptor then desensitizes rapidly and enters a transient inactive state, characterized by the presence of bound agonist. In the presence of CACNG4 or CACNG7 or CACNG8, shows resensitization which is characterized by a delayed accumulation of current flux upon continued application of glutamate.

**Cellular Location**

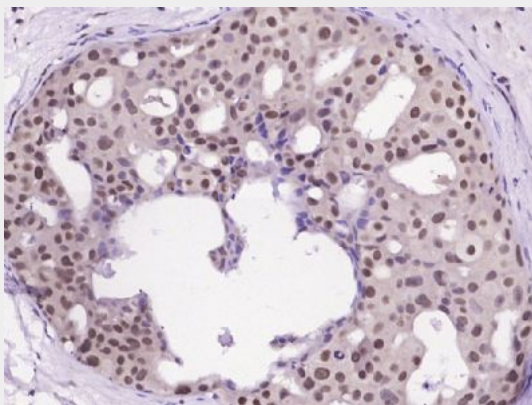
Cell membrane; Multi-pass membrane protein. Postsynaptic cell membrane; Multi-pass membrane protein Note=Interaction with CNIH2 and CNIH3 promotes cell surface expression

## Glutamate receptor 3 Polyclonal Antibody - Protocols

Provided below are standard protocols that you may find useful for product applications.

- [Western Blot](#)
- [Blocking Peptides](#)
- [Dot Blot](#)
- [Immunohistochemistry](#)
- [Immunofluorescence](#)
- [Immunoprecipitation](#)
- [Flow Cytometry](#)
- [Cell Culture](#)

## Glutamate receptor 3 Polyclonal Antibody - Images



Paraformaldehyde-fixed, paraffin embedded (Human breast cancer); Antigen retrieval by boiling in sodium citrate buffer (pH6.0) for 15min; Block endogenous peroxidase by 3% hydrogen peroxide for 20 minutes; Blocking buffer (normal goat serum) at 37°C for 30min; Antibody incubation with (Glutamate receptor 3) Polyclonal Antibody, Unconjugated (bs-1799R) at 1:400 overnight at 4°C, followed by operating according to SP Kit(Rabbit) (sp-0023) instructions and DAB staining.