

**HMBOX1 Polyclonal Antibody**  
**Purified Rabbit Polyclonal Antibody (Pab)**  
**Catalog # AP56928****Specification**

---

**HMBOX1 Polyclonal Antibody - Product Information**

Application	IHC-P
Primary Accession	<a href="#">Q6NT76</a>
Reactivity	Rat, Pig, Dog, Bovine
Host	Rabbit
Clonality	Polyclonal
Calculated MW	47278

**HMBOX1 Polyclonal Antibody - Additional Information****Gene ID** 79618**Other Names**

Homeobox-containing protein 1, Homeobox telomere-binding protein 1, Telomere-associated homeobox-containing protein 1, HMBOX1 {ECO:0000303|PubMed:16825764}

**Format**

0.01M TBS(pH7.4), 0.09% (W/V) sodium azide and 50% Glyce

**Storage**

Store at -20 °C for one year. Avoid repeated freeze/thaw cycles. When reconstituted in sterile pH 7.4 0.01M PBS or diluent of antibody the antibody is stable for at least two weeks at 2-4 °C.

**HMBOX1 Polyclonal Antibody - Protein Information****Name** HMBOX1 {ECO:0000303|PubMed:16825764}**Function**

Binds directly to 5'-TTAGGG-3' repeats in telomeric DNA (PubMed:<a href="http://www.uniprot.org/citations/23813958" target="\_blank">23813958</a>, PubMed:<a href="http://www.uniprot.org/citations/23685356" target="\_blank">23685356</a>). Associates with the telomerase complex at sites of active telomere processing and positively regulates telomere elongation (PubMed:<a href="http://www.uniprot.org/citations/23685356" target="\_blank">23685356</a>). Important for TERT binding to chromatin, indicating a role in recruitment of the telomerase complex to telomeres (By similarity). Also plays a role in the alternative lengthening of telomeres (ALT) pathway in telomerase-negative cells where it promotes formation and/or maintenance of ALT-associated promyelocytic leukemia bodies (APBs) (PubMed:<a href="http://www.uniprot.org/citations/23813958" target="\_blank">23813958</a>). Enhances formation of telomere C-circles in ALT cells, suggesting a possible role in telomere recombination (PubMed:<a href="http://www.uniprot.org/citations/23813958" target="\_blank">23813958</a>). Might also be involved in the DNA damage response at telomeres (PubMed:<a href="http://www.uniprot.org/citations/23813958" target="\_blank">23813958</a>).

**Cellular Location**

Nucleus. Cytoplasm. Chromosome, telomere. Nucleus, Cajal body. Nucleus, PML body.  
Note=Predominantly detected in cytoplasm (PubMed:16825764, PubMed:19728927). Localizes in a dynamic manner to actively processed telomeres (PubMed:23685356). Localizes to the periphery of Cajal bodies (PubMed:23685356). Associates with PML nuclear bodies in telomerase-negative cells (PubMed:23813958)

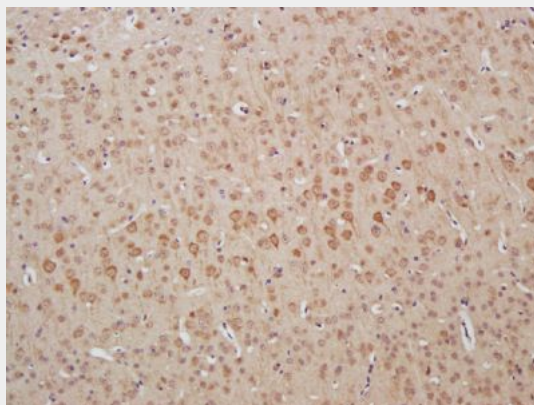
**Tissue Location**

Ubiquitous. Detected in pancreas, brain, spleen, placenta, prostate, thymus, liver, heart, bone marrow, skeletal muscle, stomach, uterus, testis, kidney, ovary, colon, lung, cardiac muscle and thyroid gland.

**HMBOX1 Polyclonal Antibody - Protocols**

Provided below are standard protocols that you may find useful for product applications.

- [Western Blot](#)
- [Blocking Peptides](#)
- [Dot Blot](#)
- [Immunohistochemistry](#)
- [Immunofluorescence](#)
- [Immunoprecipitation](#)
- [Flow Cytometry](#)
- [Cell Culture](#)

**HMBOX1 Polyclonal Antibody - Images**

Paraformaldehyde-fixed, paraffin embedded (Mouse brain); Antigen retrieval by boiling in sodium citrate buffer (pH6.0) for 15min; Block endogenous peroxidase by 3% hydrogen peroxide for 20 minutes; Blocking buffer (normal goat serum) at 37°C for 30min; Antibody incubation with (HMBOX1) Polyclonal Antibody, Unconjugated (bs-18047R) at 1:400 overnight at 4°C, followed by a conjugated secondary antibody (sp-0023) for 20 minutes and DAB staining.