

**LCTL Polyclonal Antibody**  
**Purified Rabbit Polyclonal Antibody (Pab)**  
**Catalog # AP56988**

**Specification**

**LCTL Polyclonal Antibody - Product Information**

Application	WB, IHC-P, IHC-F, IF, ICC, E
Primary Accession	<a href="#">Q6UWM7</a>
Reactivity	Rat
Host	Rabbit
Clonality	Polyclonal
Calculated MW	63 KDa
Physical State	Liquid
Immunogen	KLH conjugated synthetic peptide derived from human LCTL
Epitope Specificity	431-530/567
Isotype	IgG
<b>Purity</b>	
affinity purified by Protein A	
Buffer	0.01M TBS (pH7.4) with 1% BSA, 0.02% Proclin300 and 50% Glycerol.
SUBCELLULAR LOCATION	Endoplasmic reticulum membrane.
SIMILARITY	Belongs to the glycosyl hydrolase 1 family. Klotho subfamily.
Important Note	This product as supplied is intended for research use only, not for use in human, therapeutic or diagnostic applications.

**Background Descriptions**

This gene encodes a member of family 1 glycosidases. Glycosidases are enzymes that hydrolyze glycosidic bonds and are classified into families based on primary amino acid sequence. Most members of family 1 have two conserved glutamic acid residues, which are required for enzymatic activity. The mouse ortholog of this protein has been characterized and has a domain structure of an N-terminal signal peptide, glycosidase domain, transmembrane domain, and a short cytoplasmic tail. It lacks one of the conserved glutamic acid residues important for catalysis, and its function remains to be determined (PMID: 12084582). Alternative splicing results in multiple transcript variants. [provided by RefSeq, Jun 2013]

**LCTL Polyclonal Antibody - Additional Information**

**Gene ID** 197021

**Other Names**

Lactase-like protein, Klotho/lactase-phlorizin hydrolase-related protein, LCTL, KLPH

**Dilution**

<span class = "dilution\_WB">WB~~1:1000</span><br \><span class = "dilution\_IHC-P">IHC-P~~N/A</span><br \><span class = "dilution\_IHC-F">IHC-F~~N/A</span><br \><span class

=<span class = "dilution\_IF">IF~~1:50~200</span><br \><span class = "dilution\_ICC">ICC~~N/A</span><br \><span class = "dilution\_E">E~~N/A</span>

### Storage

Store at -20 °C for one year. Avoid repeated freeze/thaw cycles. When reconstituted in sterile pH 7.4 0.01M PBS or diluent of antibody the antibody is stable for at least two weeks at 2-4 °C.

## LCTL Polyclonal Antibody - Protein Information

**Name** LCTL

**Synonyms** KLPH

### Function

Plays a role in formation of the lens suture in the eye, which is important for normal optical properties of the lens.

### Cellular Location

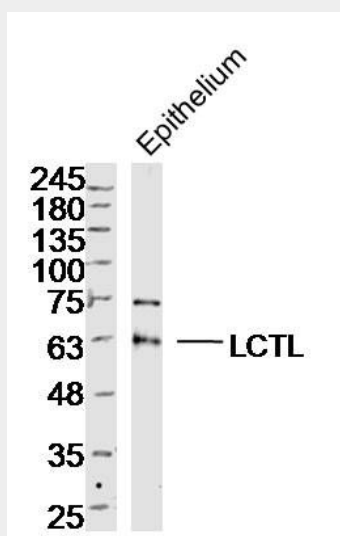
Endoplasmic reticulum membrane; Single-pass membrane protein

## LCTL Polyclonal Antibody - Protocols

Provided below are standard protocols that you may find useful for product applications.

- [Western Blot](#)
- [Blocking Peptides](#)
- [Dot Blot](#)
- [Immunohistochemistry](#)
- [Immunofluorescence](#)
- [Immunoprecipitation](#)
- [Flow Cytometry](#)
- [Cell Culture](#)

## LCTL Polyclonal Antibody - Images



Sample: Epithelium (Mouse) Lysate at 40 ug  
Primary: Anti-LCTL (bs-18201R) at 1/300 dilution  
Secondary: IRDye800CW Goat Anti-Rabbit IgG at 1/20000 dilution  
Predicted band size: 63 kD  
Observed band size: 63 kD