

LIMCH1 Polyclonal Antibody
Purified Rabbit Polyclonal Antibody (Pab)
Catalog # AP57015**Specification**

LIMCH1 Polyclonal Antibody - Product Information

Application	IHC-P, IHC-F, IF, ICC
Primary Accession	O9UPQ0
Reactivity	Rat, Pig, Dog, Bovine
Host	Rabbit
Clonality	Polyclonal
Calculated MW	121867

LIMCH1 Polyclonal Antibody - Additional Information**Gene ID** 22998**Other Names**

LIM and calponin homology domains-containing protein 1, LIMCH1 (http://www.genenames.org/cgi-bin/gene_symbol_report?hgnc_id=29191)
HGNC:29191

Dilution

IHC-P ~ N/A
IHC-F ~ N/A
IF ~ 1:50 ~ 200
ICC ~ N/A

Format

0.01M TBS(pH7.4), 0.09% (W/V) sodium azide and 50% Glyce

Storage

Store at -20 °C for one year. Avoid repeated freeze/thaw cycles. When reconstituted in sterile pH 7.4 0.01M PBS or diluent of antibody the antibody is stable for at least two weeks at 2-4 °C.

LIMCH1 Polyclonal Antibody - Protein Information**Name** LIMCH1 ([HGNC:29191](#))**Function**

Actin stress fibers-associated protein that activates non-muscle myosin IIa. Activates the non-muscle myosin IIa complex by promoting the phosphorylation of its regulatory subunit MRLC/MYL9. Through the activation of non-muscle myosin IIa, positively regulates actin stress fibers assembly and stabilizes focal adhesions. It therefore negatively regulates cell spreading and cell migration.

Cellular Location

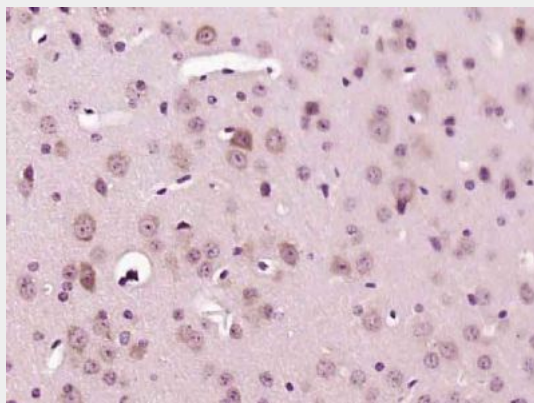
Cytoplasm, cytoskeleton, stress fiber

LIMCH1 Polyclonal Antibody - Protocols

Provided below are standard protocols that you may find useful for product applications.

- [Western Blot](#)
- [Blocking Peptides](#)
- [Dot Blot](#)
- [Immunohistochemistry](#)
- [Immunofluorescence](#)
- [Immunoprecipitation](#)
- [Flow Cytometry](#)
- [Cell Culture](#)

LIMCH1 Polyclonal Antibody - Images



Paraformaldehyde-fixed, paraffin embedded (Mouse brain); Antigen retrieval by boiling in sodium citrate buffer (pH6.0) for 15min; Block endogenous peroxidase by 3% hydrogen peroxide for 20 minutes; Blocking buffer (normal goat serum) at 37°C for 30min; Antibody incubation with (LIMCH1) Polyclonal Antibody, Unconjugated (bs-18273R) at 1:500 overnight at 4°C, followed by a conjugated secondary (sp-0023) for 20 minutes and DAB staining.