

LMAN1L Polyclonal Antibody
Purified Rabbit Polyclonal Antibody (Pab)
Catalog # AP57030**Specification**

LMAN1L Polyclonal Antibody - Product Information

Application	IHC-P, WB
Primary Accession	Q9HAT1
Reactivity	Rat, Pig, Dog, Bovine
Host	Rabbit
Clonality	Polyclonal
Calculated MW	57129

LMAN1L Polyclonal Antibody - Additional Information**Gene ID** 79748**Other Names**

Protein ERGIC-53-like, ERGIC53-like protein, Lectin mannose-binding 1-like, LMAN1-like protein, LMAN1L, ERGL

Format

0.01M TBS(pH7.4), 0.09% (W/V) sodium azide and 50% Glyce

Storage

Store at -20 °C for one year. Avoid repeated freeze/thaw cycles. When reconstituted in sterile pH 7.4 0.01M PBS or diluent of antibody the antibody is stable for at least two weeks at 2-4 °C.

LMAN1L Polyclonal Antibody - Protein Information**Name** LMAN1L**Synonyms** ERGL**Cellular Location**

Endoplasmic reticulum-Golgi intermediate compartment membrane; Single-pass type I membrane protein

Tissue Location

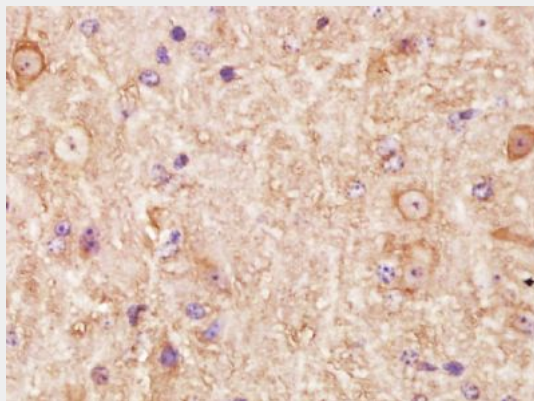
Highly expressed in normal and neoplastic prostate. Also expressed in cardiac atrium, salivary gland, spleen and selective cells in the CNS.

LMAN1L Polyclonal Antibody - Protocols

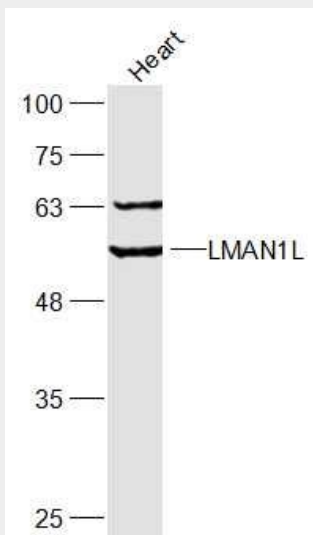
Provided below are standard protocols that you may find useful for product applications.

- [Western Blot](#)
- [Blocking Peptides](#)
- [Dot Blot](#)
- [Immunohistochemistry](#)
- [Immunofluorescence](#)
- [Immunoprecipitation](#)
- [Flow Cytometry](#)
- [Cell Culture](#)

LMAN1L Polyclonal Antibody - Images



Paraformaldehyde-fixed, paraffin embedded (Mouse brain); Antigen retrieval by boiling in sodium citrate buffer (pH6.0) for 15min; Block endogenous peroxidase by 3% hydrogen peroxide for 20 minutes; Blocking buffer (normal goat serum) at 37°C for 30min; Antibody incubation with (LMAN1L) Polyclonal Antibody, Unconjugated (bs-18305R) at 1:400 overnight at 4°C, followed by operating according to SP Kit(Rabbit) (sp-0023) instructions and DAB staining.



Sample:

Heart (Mouse) Lysate at 40 ug

Primary: Anti-LMAN1L (bs-18305R) at 1/300 dilution

Secondary: IRDye800CW Goat Anti-Rabbit IgG at 1/20000 dilution

Predicted band size: 55 kD

Observed band size: 55 kD