

LMBRD1 Polyclonal Antibody
Purified Rabbit Polyclonal Antibody (Pab)
Catalog # AP57032**Specification****LMBRD1 Polyclonal Antibody - Product Information**

Application	IHC-P, IHC-F, IF, ICC
Primary Accession	O9NUN5
Reactivity	Rat, Pig, Dog, Bovine
Host	Rabbit
Clonality	Polyclonal
Calculated MW	61389

LMBRD1 Polyclonal Antibody - Additional Information**Gene ID** 55788**Other Names**

Lysosomal cobalamin transport escort protein LMBD1, LMBD1, HDAg-L-interacting protein NESI, LMBR1 domain-containing protein 1, Nuclear export signal-interacting protein, LMBRD1 ([HGNC:23038](http://www.genenames.org/cgi-bin/gene_symbol_report?hgnc_id=23038)), C6orf209, NESI

Dilution

IHC-P ~ ~ N/A
IHC-F ~ ~ N/A
IF ~ ~ 1:50 ~ 200
ICC ~ ~ N/A

Format

0.01M TBS(pH7.4), 0.09% (W/V) sodium azide and 50% Glyce

Storage

Store at -20 °C for one year. Avoid repeated freeze/thaw cycles. When reconstituted in sterile pH 7.4 0.01M PBS or diluent of antibody the antibody is stable for at least two weeks at 2-4 °C.

LMBRD1 Polyclonal Antibody - Protein Information**Name** LMBRD1 ([HGNC:23038](#))**Synonyms** C6orf209, NESI**Function**

Lysosomal membrane chaperone required to export cobalamin (vitamin B12) from the lysosome to the cytosol, allowing its conversion to cofactors (PubMed: [19136951](http://www.uniprot.org/citations/19136951)). Targets ABCD4 transporter from the endoplasmic reticulum to the lysosome (PubMed: [27456980](http://www.uniprot.org/citations/27456980)). Then forms a complex with lysosomal ABCD4 and cytoplasmic MMACHC to transport cobalamin across the

lysosomal membrane (PubMed:25535791). Acts as an adapter protein which plays an important role in mediating and regulating the internalization of the insulin receptor (INSR) (By similarity). Involved in clathrin-mediated endocytosis of INSR via its interaction with adapter protein complex 2 (By similarity). Essential for the initiation of gastrulation and early formation of mesoderm structures during embryogenesis (By similarity).

Cellular Location

Endoplasmic reticulum membrane. Lysosome membrane; Multi-pass membrane protein. Cell membrane {ECO:0000250|UniProtKB:Q8K0B2}; Multi-pass membrane protein. Cytoplasmic vesicle, clathrin-coated vesicle {ECO:0000250|UniProtKB:Q8K0B2}

Tissue Location

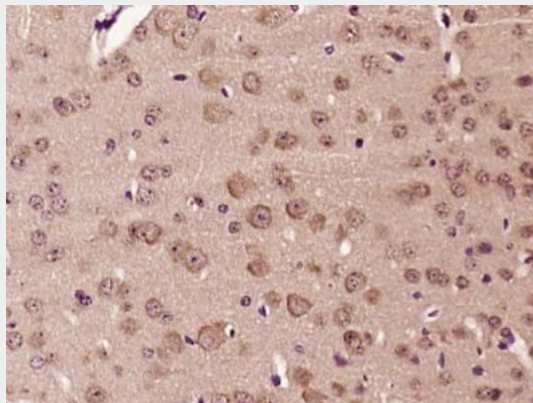
Isoform 3 is expressed in liver.

LMBRD1 Polyclonal Antibody - Protocols

Provided below are standard protocols that you may find useful for product applications.

- [Western Blot](#)
- [Blocking Peptides](#)
- [Dot Blot](#)
- [Immunohistochemistry](#)
- [Immunofluorescence](#)
- [Immunoprecipitation](#)
- [Flow Cytometry](#)
- [Cell Culture](#)

LMBRD1 Polyclonal Antibody - Images



Paraformaldehyde-fixed, paraffin embedded (Mouse brain); Antigen retrieval by boiling in sodium citrate buffer (pH6.0) for 15min; Block endogenous peroxidase by 3% hydrogen peroxide for 20 minutes; Blocking buffer (normal goat serum) at 37°C for 30min; Antibody incubation with (LMBRD1) Polyclonal Antibody, Unconjugated (bs-18309R) at 1:400 overnight at 4°C, followed by operating according to SP Kit(Rabbit) (sp-0023) instructions and DAB staining.