

**LPLUNC3 Polyclonal Antibody**  
**Purified Rabbit Polyclonal Antibody (Pab)**  
**Catalog # AP57055****Specification**

---

**LPLUNC3 Polyclonal Antibody - Product Information**

Application	WB
Primary Accession	<a href="#">P59826</a>
Reactivity	Rat
Host	Rabbit
Clonality	Polyclonal
Calculated MW	49887

**LPLUNC3 Polyclonal Antibody - Additional Information****Gene ID** 359710**Other Names**

BPI fold-containing family B member 3, Ligand-binding protein RYA3, Long palate, lung and nasal epithelium carcinoma-associated protein 3, BPIFB3, C20orf185, LPLUNC3

**Format**

0.01M TBS(pH7.4), 0.09% (W/V) sodium azide and 50% Glyce

**Storage**

Store at -20 °C for one year. Avoid repeated freeze/thaw cycles. When reconstituted in sterile pH 7.4 0.01M PBS or diluent of antibody the antibody is stable for at least two weeks at 2-4 °C.

**LPLUNC3 Polyclonal Antibody - Protein Information****Name** BPIFB3 ([HGNC:16178](#))**Synonyms** C20orf185, LPLUNC3**Function**

May have the capacity to recognize and bind specific classes of odorants. May act as a carrier molecule, transporting odorants across the mucus layer to access receptor sites. May serve as a primary defense mechanism by recognizing and removing potentially harmful odorants or pathogenic microorganisms from the mucosa or clearing excess odorant from mucus to enable new odorant stimuli to be received (By similarity).

**Cellular Location**

Secreted. Cytoplasm. Note=According to PubMed:12837268, it is cytoplasmic

**Tissue Location**

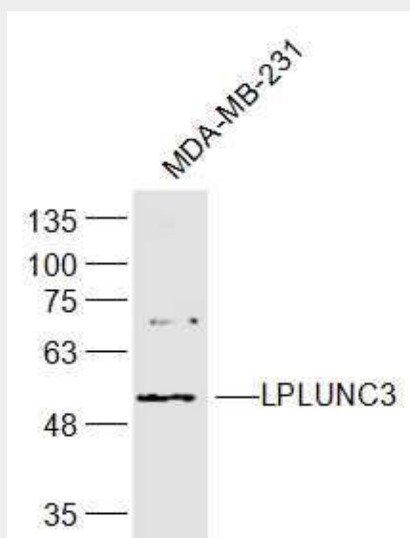
Detected in nasal septal epithelium.

## LPLUNC3 Polyclonal Antibody - Protocols

Provided below are standard protocols that you may find useful for product applications.

- [Western Blot](#)
- [Blocking Peptides](#)
- [Dot Blot](#)
- [Immunohistochemistry](#)
- [Immunofluorescence](#)
- [Immunoprecipitation](#)
- [Flow Cytometry](#)
- [Cell Culture](#)

## LPLUNC3 Polyclonal Antibody - Images



**Sample:**

MDA-MB-231(Human) Cell Lysate at 30 ug

Primary: Anti-LPLUNC3 (bs-18351R) at 1/300 dilution

Secondary: IRDye800CW Goat Anti-Rabbit IgG at 1/20000 dilution

Predicted band size: 48 kD

Observed band size: 53 kD