

**LRRC26 Polyclonal Antibody**  
**Purified Rabbit Polyclonal Antibody (Pab)**  
**Catalog # AP57067****Specification**

---

**LRRC26 Polyclonal Antibody - Product Information**

Application	<b>IHC-P</b>
Primary Accession	<a href="#">Q2I0M4</a>
Host	<b>Rabbit</b>
Clonality	<b>Polyclonal</b>
Calculated MW	<b>34857</b>

**LRRC26 Polyclonal Antibody - Additional Information****Gene ID** 389816**Other Names**

Leucine-rich repeat-containing protein 26, BK channel auxiliary gamma subunit LRRC26, Cytokeratin-associated protein in cancer, LRRC26, CAPC

**Format**

0.01M TBS(pH7.4), 0.09% (W/V) sodium azide and 50% Glyce

**Storage**

Store at -20 °C for one year. Avoid repeated freeze/thaw cycles. When reconstituted in sterile pH 7.4 0.01M PBS or diluent of antibody the antibody is stable for at least two weeks at 2-4 °C.

**LRRC26 Polyclonal Antibody - Protein Information****Name** LRRC26**Synonyms** CAPC**Function**

Auxiliary protein of the large-conductance, voltage and calcium-activated potassium channel (BK alpha). Required for the conversion of BK alpha channels from a high-voltage to a low-voltage activated channel type in non-excitabile cells. These are characterized by negative membrane voltages and constant low levels of calcium.

**Cellular Location**

Cell membrane; Single-pass type I membrane protein. Cytoplasm, cytoskeleton. Note=Localizes to the cytoplasm when expressed at high levels.

**Tissue Location**

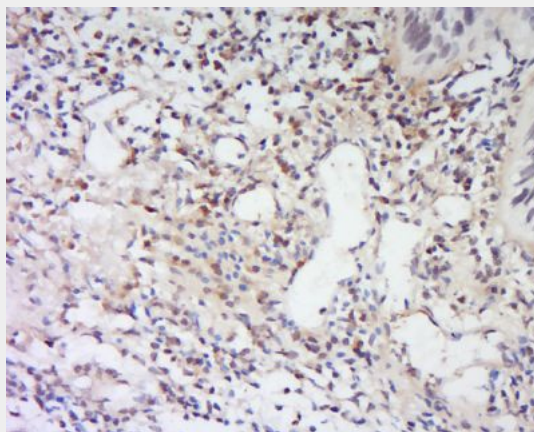
Isoform 1 is expressed highly in normal prostate and salivary gland, very weakly in colon, pancreas, and intestine, and not at all in other tissues. Isoform 1 is expressed highly in many cancer cell lines and in breast cancer, pancreatic cancer and colon cancer. Isoform 2 is expressed in cancer cell lines

## LRRC26 Polyclonal Antibody - Protocols

Provided below are standard protocols that you may find useful for product applications.

- [Western Blot](#)
- [Blocking Peptides](#)
- [Dot Blot](#)
- [Immunohistochemistry](#)
- [Immunofluorescence](#)
- [Immunoprecipitation](#)
- [Flow Cytometry](#)
- [Cell Culture](#)

## LRRC26 Polyclonal Antibody - Images



Tissue/cell: human laryngo carcinoma; 4% Paraformaldehyde-fixed and paraffin-embedded;

Antigen retrieval: citrate buffer ( 0.01M, pH 6.0 ), Boiling bathing for 15min; Block endogenous peroxidase by 3% Hydrogen peroxide for 30min; Blocking buffer (normal goat serum,C-0005) at 37°C for 20 min;

Incubation: Anti-LRRC26 Polyclonal Antibody, Unconjugated(bs-18372R) 1:200, overnight at 4°C, followed by conjugation to the secondary antibody(SP-0023) and DAB(C-0010) staining