

LSM6 Polyclonal Antibody
Purified Rabbit Polyclonal Antibody (Pab)
Catalog # AP57077**Specification**

LSM6 Polyclonal Antibody - Product Information

| | |
|--------------------------------|----------------------------------------------------------------------------------------------------------------------------------------------------------------------------------------------------------------------------------------------------------------------------------------------------------|
| Application | IHC-P, IHC-F, IF, ICC, E |
| Primary Accession | P62312 |
| Reactivity | Rat, Pig, Dog |
| Host | Rabbit |
| Clonality | Polyclonal |
| Calculated MW | 9 KDa |
| Physical State | Liquid |
| Immunogen | KLH conjugated synthetic peptide derived from human LSM6 |
| Epitope Specificity | 31-80/80 |
| Isotype | IgG |
| Purity | |
| affinity purified by Protein A | |
| Buffer | 0.01M TBS (pH7.4) with 1% BSA, 0.02% Proclin300 and 50% Glycerol. |
| SUBCELLULAR LOCATION | Cytoplasmic and Nuclear |
| SIMILARITY | Belongs to the snRNP Sm proteins family. SmF/LSm6 subfamily. |
| SUBUNIT | Component of the heptameric LSM1-LSM7 complex, which consists of LSM1, LSM2, LSM3, LSM4, LSM5, LSM6 and LSM7. Component of the heptameric LSM2-LSM8 complex, which consists of LSM2, LSM3, LSM4, LSM5, LSM6, LSM7 and LSM8. The LSm subunits form a seven-membered ring structure with a doughnut shape. |
| Important Note | This product as supplied is intended for research use only, not for use in human, therapeutic or diagnostic applications. |

Background Descriptions

Sm-like proteins were identified in a variety of organisms based on sequence homology with the Sm protein family (see SNRPD2; MIM 601061). Sm-like proteins contain the Sm sequence motif, which consists of 2 regions separated by a linker of variable length that folds as a loop. The Sm-like proteins are thought to form a stable heteromer present in tri-snRNP particles, which are important for pre-mRNA splicing.[supplied by OMIM, Apr 2004]

LSM6 Polyclonal Antibody - Additional Information**Gene ID** 11157**Other Names**

U6 snRNA-associated Sm-like protein LSm6, LSM6

Dilution

IHC-P ~ ~ N/A
IHC-F ~ ~ N/A
IF ~ ~ 1:50 ~ 200
ICC ~ ~ N/A
E ~ ~ N/A

Format

0.01M TBS(pH7.4), 0.09% (W/V) sodium azide and 50% Glyce

Storage

Store at -20 °C for one year. Avoid repeated freeze/thaw cycles. When reconstituted in sterile pH 7.4 0.01M PBS or diluent of antibody the antibody is stable for at least two weeks at 2-4 °C.

LSM6 Polyclonal Antibody - Protein Information**Name** LSM6**Function**

Plays a role in pre-mRNA splicing as component of the U4/U6- U5 tri-snRNP complex that is involved in spliceosome assembly, and as component of the precatalytic spliceosome (spliceosome B complex) (PubMed: [28781166](http://www.uniprot.org/citations/28781166)). The heptameric LSM2-8 complex binds specifically to the 3'-terminal U-tract of U6 snRNA (PubMed: [10523320](http://www.uniprot.org/citations/10523320)). Component of LSm protein complexes, which are involved in RNA processing and may function in a chaperone-like manner, facilitating the efficient association of RNA processing factors with their substrates. Component of the cytoplasmic LSM1-LSM7 complex, which is thought to be involved in mRNA degradation by activating the decapping step in the 5'-to-3' mRNA decay pathway (Probable).

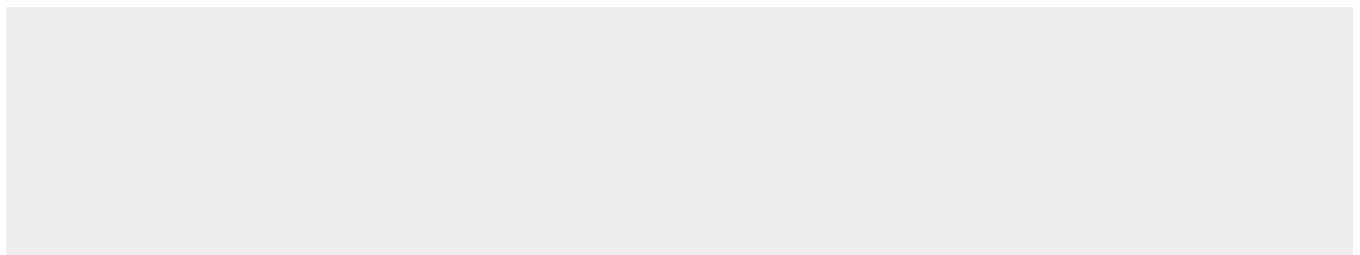
Cellular Location

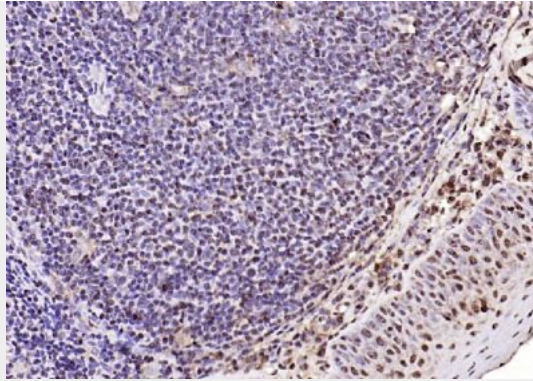
Cytoplasm. Nucleus

LSM6 Polyclonal Antibody - Protocols

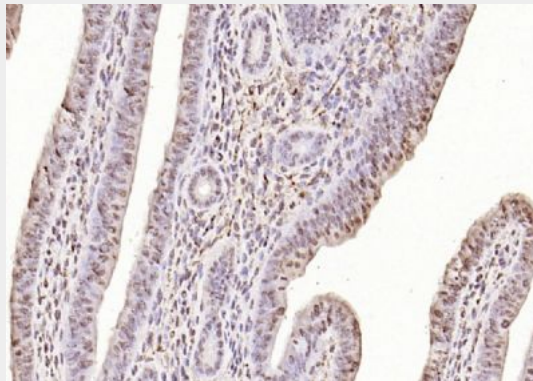
Provided below are standard protocols that you may find useful for product applications.

- [Western Blot](#)
- [Blocking Peptides](#)
- [Dot Blot](#)
- [Immunohistochemistry](#)
- [Immunofluorescence](#)
- [Immunoprecipitation](#)
- [Flow Cytometry](#)
- [Cell Culture](#)

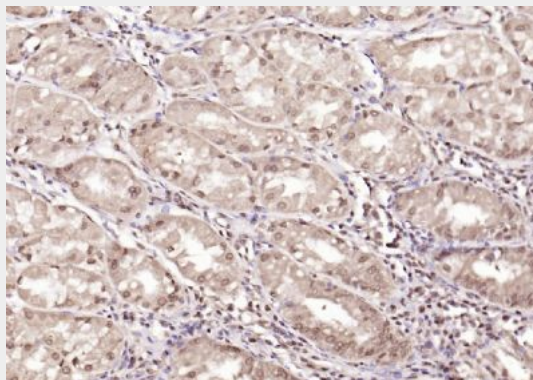
LSM6 Polyclonal Antibody - Images



Paraformaldehyde-fixed, paraffin embedded (human tonsil); Antigen retrieval by boiling in sodium citrate buffer (pH6.0) for 15min; Block endogenous peroxidase by 3% hydrogen peroxide for 20 minutes; Blocking buffer (normal goat serum) at 37°C for 30min; Antibody incubation with (LSM6) Polyclonal Antibody, Unconjugated (bs-18431R) at 1:200 overnight at 4°C, followed by operating according to SP Kit(Rabbit) (sp-0023) instructions and DAB staining.



Paraformaldehyde-fixed, paraffin embedded (mouse uterus); Antigen retrieval by boiling in sodium citrate buffer (pH6.0) for 15min; Block endogenous peroxidase by 3% hydrogen peroxide for 20 minutes; Blocking buffer (normal goat serum) at 37°C for 30min; Antibody incubation with (LSM6) Polyclonal Antibody, Unconjugated (bs-18431R) at 1:200 overnight at 4°C, followed by operating according to SP Kit(Rabbit) (sp-0023) instructions and DAB staining.



Paraformaldehyde-fixed, paraffin embedded (human gastric); Antigen retrieval by boiling in sodium citrate buffer (pH6.0) for 15min; Block endogenous peroxidase by 3% hydrogen peroxide for 20 minutes; Blocking buffer (normal goat serum) at 37°C for 30min; Antibody incubation with (LSM6) Polyclonal Antibody, Unconjugated (bs-18431R) at 1:200 overnight at 4°C, followed by operating according to SP Kit(Rabbit) (sp-0023) instructions and DAB staining.