

ZDHHC8/ZNF378 Polyclonal Antibody
Purified Rabbit Polyclonal Antibody (Pab)
Catalog # AP57109**Specification****ZDHHC8/ZNF378 Polyclonal Antibody - Product Information**

Application	IHC-P, IHC-F, IF, ICC, E
Primary Accession	O9ULC8
Reactivity	Rat, Pig, Dog, Bovine
Host	Rabbit
Clonality	Polyclonal
Calculated MW	80 KDa
Physical State	Liquid
Immunogen	KLH conjugated synthetic peptide derived from human ZDHHC8
Epitope Specificity	561-765/765
Isotype	IgG
Purity	
affinity purified by Protein A	
Buffer	0.01M TBS (pH7.4) with 1% BSA, 0.02% Proclin300 and 50% Glycerol.
SUBCELLULAR LOCATION	Golgi apparatus membrane; Multi-pass membrane protein. Mitochondrion membrane; Multi-pass membrane protein. Belongs to the DHHC palmitoyltransferase family. ERF2/ZDHHC9 subfamily.
SIMILARITY	
Important Note	This product as supplied is intended for research use only, not for use in human, therapeutic or diagnostic applications.

Background Descriptions

This gene encodes a four transmembrane protein that is a member of the zinc finger DHHC domain-containing protein family. The encoded protein may function as a palmitoyltransferase. Defects in this gene may be associated with a susceptibility to schizophrenia. Alternate splicing of this gene results in multiple transcript variants. A pseudogene of this gene is found on chromosome 22.[provided by RefSeq, May 2010]

ZDHHC8/ZNF378 Polyclonal Antibody - Additional Information**Gene ID** 29801**Other Names**

Palmitoyltransferase ZDHHC8, 2.3.1.225, Zinc finger DHHC domain-containing protein 8 {ECO:0000312|HGNC:HGNC:18474}, DHHC-8, Zinc finger protein 378, ZDHHC8 (HGNC:18474)

Target/Specificity

Widely expressed.

Dilution

IHC-P~~N/A
IHC-F~~N/A
IF~~1:50~200
ICC~~N/A
E~~N/A

Storage

Store at -20 °C for one year. Avoid repeated freeze/thaw cycles. When reconstituted in sterile pH 7.4 0.01M PBS or diluent of antibody the antibody is stable for at least two weeks at 2-4 °C.

ZDHHC8/ZNF378 Polyclonal Antibody - Protein Information

Name ZDHHC8 ([HGNC:18474](#))

Function

Palmitoyltransferase that catalyzes the addition of palmitate onto various protein substrates and therefore functions in several unrelated biological processes (Probable). Through the palmitoylation of ABCA1 regulates the localization of the transporter to the plasma membrane and thereby regulates its function in cholesterol and phospholipid efflux (Probable). Could also palmitoylate the D(2) dopamine receptor DRD2 and regulate its stability and localization to the plasma membrane (Probable). Could also play a role in glutamatergic transmission (By similarity).

Cellular Location

Golgi apparatus membrane; Multi-pass membrane protein. Mitochondrion membrane {ECO:0000250|UniProtKB:Q5Y5T5}; Multi-pass membrane protein

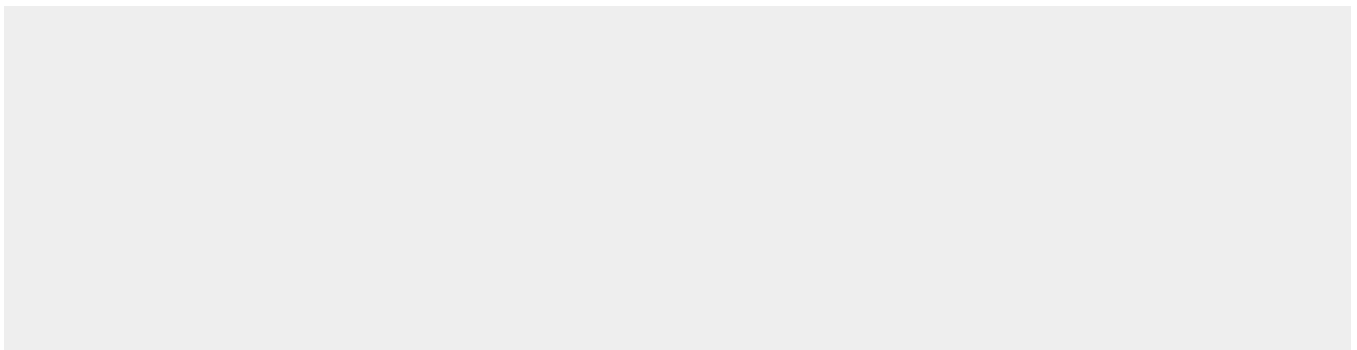
Tissue Location

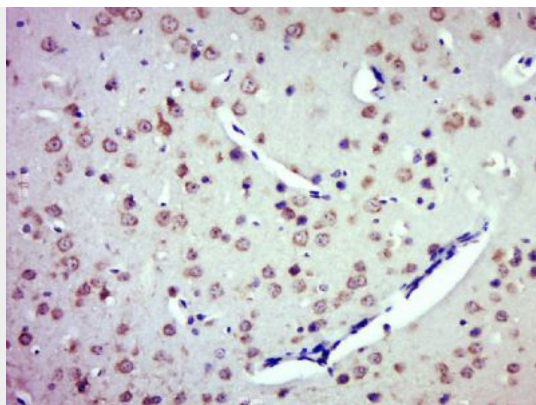
Widely expressed..

ZDHHC8/ZNF378 Polyclonal Antibody - Protocols

Provided below are standard protocols that you may find useful for product applications.

- [Western Blot](#)
- [Blocking Peptides](#)
- [Dot Blot](#)
- [Immunohistochemistry](#)
- [Immunofluorescence](#)
- [Immunoprecipitation](#)
- [Flow Cytometry](#)
- [Cell Culture](#)

ZDHHC8/ZNF378 Polyclonal Antibody - Images



Paraformaldehyde-fixed, paraffin embedded (Mouse brain); Antigen retrieval by boiling in sodium citrate buffer (pH6.0) for 15min; Block endogenous peroxidase by 3% hydrogen peroxide for 20 minutes; Blocking buffer (normal goat serum) at 37°C for 30min; Antibody incubation with (ZDHHC8) Polyclonal Antibody, Unconjugated (bs-18486R) at 1:500 overnight at 4°C, followed by a conjugated secondary (sp-0023) for 20 minutes and DAB staining.