

ZNF2 Polyclonal Antibody
Purified Rabbit Polyclonal Antibody (Pab)
Catalog # AP57115

Specification

ZNF2 Polyclonal Antibody - Product Information

Application	IHC-P, IHC-F, IF, ICC
Primary Accession	Q9BSG1
Host	Rabbit
Clonality	Polyclonal
Calculated MW	49 KDa
Physical State	Liquid
Immunogen	KLH conjugated synthetic peptide derived from human ZNF2
Epitope Specificity	101-200/426
Isotype	IgG
Purity	
affinity purified by Protein A	
Buffer	0.01M TBS (pH7.4) with 1% BSA, 0.02% Proclin300 and 50% Glycerol.
SUBCELLULAR LOCATION	Nucleus.
SIMILARITY	Belongs to the krueppel C2H2-type zinc-finger protein family. Contains 9 C2H2-type zinc fingers. Contains 1 KRAB domain.
Important Note	This product as supplied is intended for research use only, not for use in human, therapeutic or diagnostic applications.

Background Descriptions

The protein encoded by this gene belongs to the C2H2-type zinc-finger protein family. The exact function of this gene is not known, however, zinc-finger proteins are known to interact with DNA and function as transcription regulators. Alternatively spliced transcript variants encoding different isoforms have been found for this gene. [provided by RefSeq, Apr 2014]

ZNF2 Polyclonal Antibody - Additional Information

Gene ID 7549

Other Names

Zinc finger protein 2, Zinc finger protein 2.2, Zinc finger protein 661, ZNF2 (http://www.genenames.org/cgi-bin/gene_symbol_report?hgnc_id=12991), ZNF661

Dilution

IHC-P~~N/A
IHC-F~~N/A
IF~~1:50~200
ICC~~N/A

Storage

Store at -20 °C for one year. Avoid repeated freeze/thaw cycles. When reconstituted in sterile pH 7.4 0.01M PBS or diluent of antibody the antibody is stable for at least two weeks at 2-4 °C.

ZNF2 Polyclonal Antibody - Protein Information

Name ZNF2 ([HGNC:12991](#))

Synonyms ZNF661

Function

May be involved in transcriptional regulation.

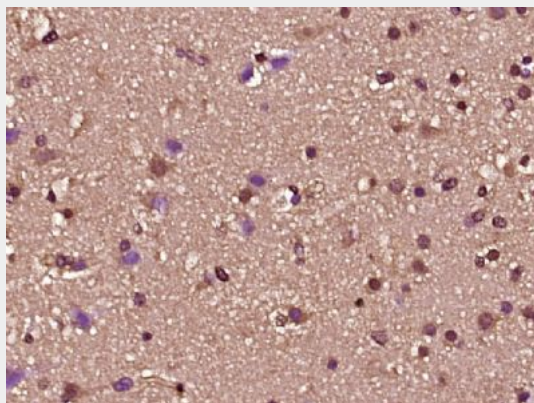
Cellular Location

Nucleus.

ZNF2 Polyclonal Antibody - Protocols

Provided below are standard protocols that you may find useful for product applications.

- [Western Blot](#)
- [Blocking Peptides](#)
- [Dot Blot](#)
- [Immunohistochemistry](#)
- [Immunofluorescence](#)
- [Immunoprecipitation](#)
- [Flow Cytometry](#)
- [Cell Culture](#)

ZNF2 Polyclonal Antibody - Images

Paraformaldehyde-fixed, paraffin embedded (human brain glioma); Antigen retrieval by boiling in sodium citrate buffer (pH6.0) for 15min; Block endogenous peroxidase by 3% hydrogen peroxide for 20 minutes; Blocking buffer (normal goat serum) at 37°C for 30min; Antibody incubation with (ZNF2) Polyclonal Antibody, Unconjugated (bs-18496R) at 1:400 overnight at 4°C, followed by operating according to SP Kit(Rabbit) (sp-0023) instructions and DAB staining.