

ZFP161 Polyclonal Antibody
Purified Rabbit Polyclonal Antibody (Pab)
Catalog # AP57133**Specification**

ZFP161 Polyclonal Antibody - Product Information

Application	IHC-P, IHC-F, IF, ICC
Primary Accession	O43829
Reactivity	Rat, Dog, Bovine
Host	Rabbit
Clonality	Polyclonal
Calculated MW	51 KDa
Physical State	Liquid
Immunogen	KLH conjugated synthetic peptide derived from human ZFP161
Epitope Specificity	181-280/449
Isotype	IgG
Purity	
affinity purified by Protein A	
Buffer	0.01M TBS (pH7.4) with 1% BSA, 0.02% Proclin300 and 50% Glycerol.
SUBCELLULAR LOCATION	Nucleus.
SIMILARITY	Belongs to the krueppel C2H2-type zinc-finger protein family. Contains 1 BTB (POZ) domain. Contains 5 C2H2-type zinc fingers.
Important Note	This product as supplied is intended for research use only, not for use in human, therapeutic or diagnostic applications.

Background Descriptions

ZFP161 is a 449 amino acid member of the Krüppel C2H2-type zinc-finger protein family. Localized to distinct regions within the nucleus, ZFP161 functions both as a transcriptional repressor of Thymidine Kinase (TK) and c-Myc promoters and as a transcriptional activator of the dopamine transporter (DAT) promoter. ZFP161 contains one BTB (POZ) domain and five C2H2-type zinc fingers which direct its specific localization and nucleic acid binding, respectively. Defects in the gene encoding ZFP161 may be associated with holoprosencephaly type 4 (HPE4), a structural anomaly of the brain characterized by a flattened nasal tip with no visible septum, hypotelorism, lack of nasal bridge, ptosis of the left upper eyelid and, in some cases, infant death.

ZFP161 Polyclonal Antibody - Additional Information**Gene ID** 7541**Other Names**

Zinc finger and BTB domain-containing protein 14, Zinc finger protein 161 homolog, Zfp-161, Zinc finger protein 478, Zinc finger protein 5 homolog, ZF5, Zfp-5, hZF5, ZBTB14, ZFP161, ZNF478

Dilution

IHC-P~~N/A<br \><span class
="dilution_IHC-F">IHC-F~~N/A<br \><span class
="dilution_IF">IF~~1:50~200<br \>ICC~~N/A

Storage

Store at -20 °C for one year. Avoid repeated freeze/thaw cycles. When reconstituted in sterile pH 7.4 0.01M PBS or diluent of antibody the antibody is stable for at least two weeks at 2-4 °C.

ZFP161 Polyclonal Antibody - Protein Information

Name ZBTB14

Synonyms ZFP161, ZNF478

Function

Transcriptional activator of the dopamine transporter (DAT), binding it's promoter at the consensus sequence 5'-CCTGCACAGTTCACGGA- 3'. Binds to 5'-d(GCC)(n)-3' trinucleotide repeats in promoter regions and acts as a repressor of the FMR1 gene. Transcriptional repressor of MYC and thymidine kinase promoters.

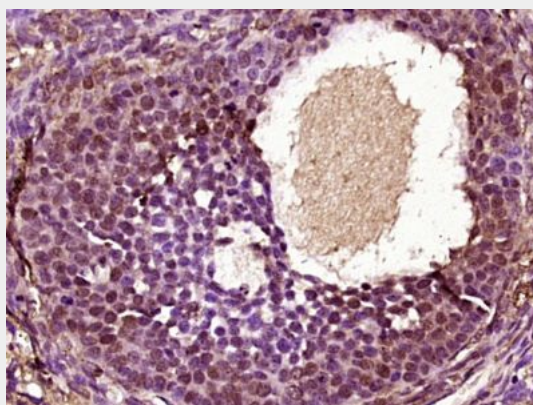
Cellular Location

Nucleus. Note=Colocalizes with ZBTB21 in nucleus in HEK293 cells

ZFP161 Polyclonal Antibody - Protocols

Provided below are standard protocols that you may find useful for product applications.

- [Western Blot](#)
- [Blocking Peptides](#)
- [Dot Blot](#)
- [Immunohistochemistry](#)
- [Immunofluorescence](#)
- [Immunoprecipitation](#)
- [Flow Cytometry](#)
- [Cell Culture](#)

ZFP161 Polyclonal Antibody - Images

Paraformaldehyde-fixed, paraffin embedded (Rat ovary); Antigen retrieval by boiling in sodium

citrate buffer (pH6.0) for 15min; Block endogenous peroxidase by 3% hydrogen peroxide for 20 minutes; Blocking buffer (normal goat serum) at 37°C for 30min; Antibody incubation with (ZFP161) Polyclonal Antibody, Unconjugated (bs-18527R) at 1:400 overnight at 4°C, followed by operating according to SP Kit(Rabbit) (sp-0023) instructions and DAB staining.