

**ZCCHC5 Polyclonal Antibody**  
**Purified Rabbit Polyclonal Antibody (Pab)**  
**Catalog # AP57144****Specification****ZCCHC5 Polyclonal Antibody - Product Information**

Application	WB, IHC-P, IHC-F, IF, ICC, E
Primary Accession	<a href="#">Q8N8U3</a>
Host	Rabbit
Clonality	Polyclonal
Calculated MW	53 KDa
Physical State	Liquid
Immunogen	KLH conjugated synthetic peptide derived from human ZCCHC5
Epitope Specificity	21-120/475
Isotype	IgG
<b>Purity</b>	
affinity purified by Protein A	
Buffer	0.01M TBS (pH7.4) with 1% BSA, 0.02% Proclin300 and 50% Glycerol.
SIMILARITY	Contains 1 CCHC-type zinc finger.
Important Note	This product as supplied is intended for research use only, not for use in human, therapeutic or diagnostic applications.

**Background Descriptions**

This gene is a member of a family of gag-related retrotransposon genes. These genes appear to have lost the ability to retrotranspose; however, their open reading frames have remained intact, which may indicate that these genes have acquired new functions in the cell. [provided by RefSeq, Nov 2009]

**ZCCHC5 Polyclonal Antibody - Additional Information****Gene ID** 203430**Other Names**

Retrotransposon Gag-like protein 3 {ECO:0000312|HGNC:HGNC:22997}, Zinc finger CCHC domain-containing protein 5, RTL3 ([http://www.genenames.org/cgi-bin/gene\\_symbol\\_report?hgnc\\_id=22997](http://www.genenames.org/cgi-bin/gene_symbol_report?hgnc_id=22997))

**Dilution**

WB~1:1000  
IHC-P~N/A  
IHC-F~N/A  
IF~1:50~200  
ICC~N/A  
E~N/A

**Format**

0.01M TBS(pH7.4), 0.09% (W/V) sodium azide and 50% Glyce

### Storage

Store at -20 °C for one year. Avoid repeated freeze/thaw cycles. When reconstituted in sterile pH 7.4 0.01M PBS or diluent of antibody the antibody is stable for at least two weeks at 2-4 °C.

## ZCCHC5 Polyclonal Antibody - Protein Information

**Name** RTL3 ([HGNC:22997](#))

### Function

May function as a transcriptional regulator. Plays a role in postnatal myogenesis, may be involved in the regulation of satellite cells self-renewal.

### Cellular Location

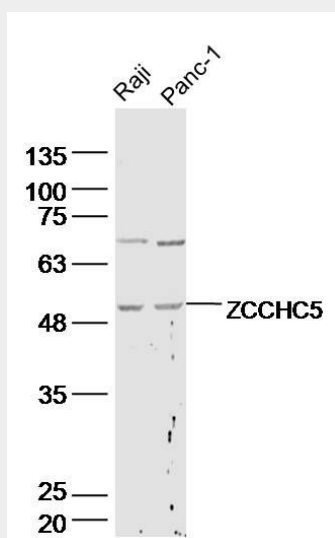
Nucleus {ECO:0000250|UniProtKB:Q6P1Y1}.

## ZCCHC5 Polyclonal Antibody - Protocols

Provided below are standard protocols that you may find useful for product applications.

- [Western Blot](#)
- [Blocking Peptides](#)
- [Dot Blot](#)
- [Immunohistochemistry](#)
- [Immunofluorescence](#)
- [Immunoprecipitation](#)
- [Flow Cytometry](#)
- [Cell Culture](#)

## ZCCHC5 Polyclonal Antibody - Images



Sample:

Raji Cell (Human) Lysate at 40 ug

Panc-1 Cell (Human) Lysate at 40 ug

Primary: Anti-ZCCHC5 (bs-18554R) at 1/300 dilution  
Secondary: IRDye800CW Goat Anti-Rabbit IgG at 1/20000 dilution  
Predicted band size: 53 kD  
Observed band size: 53 kD