

**MAB21L1 Polyclonal Antibody**  
**Purified Rabbit Polyclonal Antibody (Pab)**  
**Catalog # AP57149****Specification****MAB21L1 Polyclonal Antibody - Product Information**

Application	IHC-P, IHC-F, IF, ICC, E
Primary Accession	<a href="#">Q13394</a>
Reactivity	Bovine
Host	Rabbit
Clonality	Polyclonal
Calculated MW	41 KDa
Physical State	Liquid
Immunogen	KLH conjugated synthetic peptide derived from human MAB21L1
Epitope Specificity	1-100/359
Isotype	IgG
<b>Purity</b>	
affinity purified by Protein A	
Buffer	0.01M TBS (pH7.4) with 1% BSA, 0.02% Proclin300 and 50% Glycerol.
SUBCELLULAR LOCATION	Nucleus
SIMILARITY	Belongs to the mab-21 family.
Important Note	This product as supplied is intended for research use only, not for use in human, therapeutic or diagnostic applications.

**Background Descriptions**

This gene is similar to the MAB-21 cell fate-determining gene found in C. elegans. It may be involved in eye and cerebellum development, and it has been proposed that expansion of a trinucleotide repeat region in the 5' UTR may play a role in a variety of psychiatric disorders. [provided by RefSeq, Oct 2008]

**MAB21L1 Polyclonal Antibody - Additional Information****Gene ID** 4081**Other Names**

Putative nucleotidyltransferase MAB21L1, 2.7.7.-, Protein mab-21-like 1 {ECO:0000312|HGNC:HGNC:6757}, MAB21L1 ([http://www.genenames.org/cgi-bin/gene\\_symbol\\_report?hgnc\\_id=6757](http://www.genenames.org/cgi-bin/gene_symbol_report?hgnc_id=6757))

**Target/Specificity**

Expressed in brain, cerebellum and skeletal muscle.

**Dilution**

**IHC-P** ~ ~ N/A  
**IHC-F** ~ ~ N/A

=["dilution\\_IF">IF~1:50~200](#)</span><br \><span class =["dilution\\_ICC">ICC~N/A](#)</span><br \><span class =["dilution\\_E">E~N/A](#)</span>

### Storage

Store at -20 °C for one year. Avoid repeated freeze/thaw cycles. When reconstituted in sterile pH 7.4 0.01M PBS or diluent of antibody the antibody is stable for at least two weeks at 2-4 °C.

## MAB21L1 Polyclonal Antibody - Protein Information

**Name** MAB21L1 ([HGNC:6757](#))

### Function

Putative nucleotidyltransferase required for several aspects of embryonic development including normal development of the eye (PubMed:[27103078](#)</a>, PubMed:[30487245](#)</a>). It is unclear whether it displays nucleotidyltransferase activity in vivo (PubMed:[27271801](#)</a>). Binds single-stranded RNA (ssRNA) (PubMed:[27271801](#)</a>).  
target="[\\_blank](#)">27271801</a>). Binds single-stranded RNA (ssRNA) (PubMed:[27271801](#)</a>).  
href="[http://www.uniprot.org/citations/27271801](#)" target="[\\_blank](#)">27271801</a>).

### Cellular Location

Nucleus {ECO:0000250|UniProtKB:O70299}.

### Tissue Location

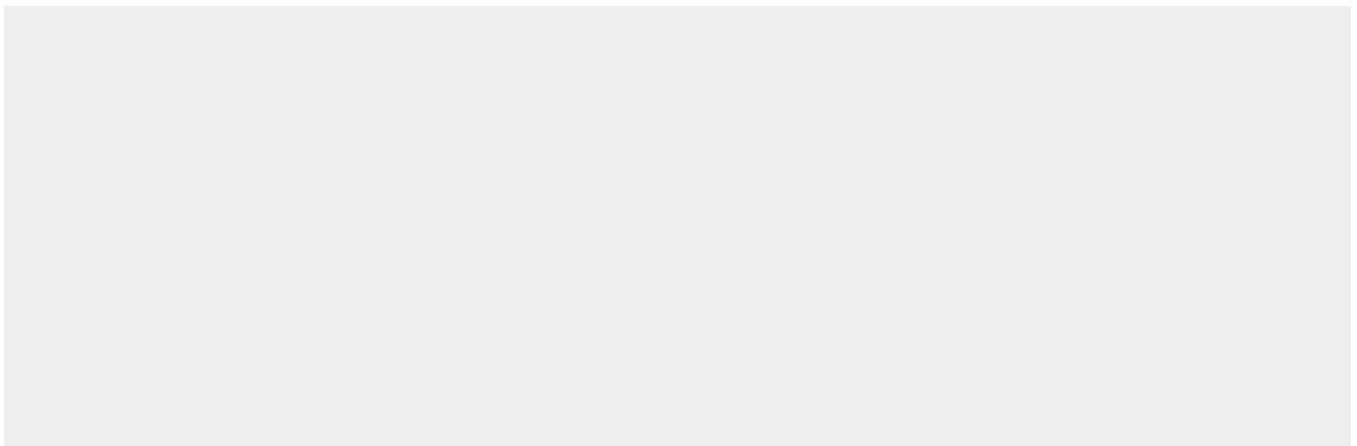
Expressed in brain, cerebellum and skeletal muscle.

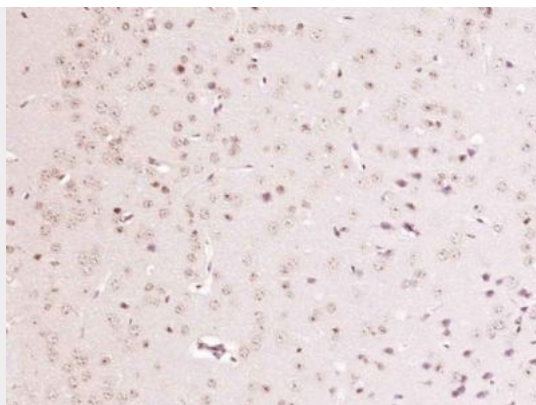
## MAB21L1 Polyclonal Antibody - Protocols

Provided below are standard protocols that you may find useful for product applications.

- [Western Blot](#)
- [Blocking Peptides](#)
- [Dot Blot](#)
- [Immunohistochemistry](#)
- [Immunofluorescence](#)
- [Immunoprecipitation](#)
- [Flow Cytometry](#)
- [Cell Culture](#)

## MAB21L1 Polyclonal Antibody - Images





Paraformaldehyde-fixed, paraffin embedded (Mouse brain); Antigen retrieval by boiling in sodium citrate buffer (pH6.0) for 15min; Block endogenous peroxidase by 3% hydrogen peroxide for 20 minutes; Blocking buffer (normal goat serum) at 37°C for 30min; Antibody incubation with (MAB21L1) Polyclonal Antibody, Unconjugated (bs-18561R) at 1:400 overnight at 4°C, followed by operating according to SP Kit(Rabbit) (sp-0023) instructions and DAB staining.