

ZCCHC9 Polyclonal Antibody
Purified Rabbit Polyclonal Antibody (Pab)
Catalog # AP57150**Specification****ZCCHC9 Polyclonal Antibody - Product Information**

Application	WB, IHC-P, IHC-F, IF, ICC, E
Primary Accession	Q8N567
Reactivity	Rat, Pig, Cat, Dog, Bovine
Host	Rabbit
Clonality	Polyclonal
Calculated MW	30 KDa
Physical State	Liquid
Immunogen	KLH conjugated synthetic peptide derived from human ZCCHC9
Epitope Specificity	21-120/271
Isotype	IgG
Purity	
affinity purified by Protein A	
Buffer	0.01M TBS (pH7.4) with 1% BSA, 0.02% Proclin300 and 50% Glycerol.
SIMILARITY	Contains 4 CCHC-type zinc fingers.
Important Note	This product as supplied is intended for research use only, not for use in human, therapeutic or diagnostic applications.

ZCCHC9 Polyclonal Antibody - Additional Information**Gene ID** 84240**Other Names**

Zinc finger CCHC domain-containing protein 9, ZCCHC9

Dilution

WB~~1:1000<br \>IHC-P~~N/A<br \>IHC-F~~N/A<br \>IF~~1:50~200<br \>ICC~~N/A<br \>E~~N/A

Storage

Store at -20 °C for one year. Avoid repeated freeze/thaw cycles. When reconstituted in sterile pH 7.4 0.01M PBS or diluent of antibody the antibody is stable for at least two weeks at 2-4 °C.

ZCCHC9 Polyclonal Antibody - Protein Information**Name** ZCCHC9

Function

May down-regulate transcription mediated by NF-kappa-B and the serum response element.

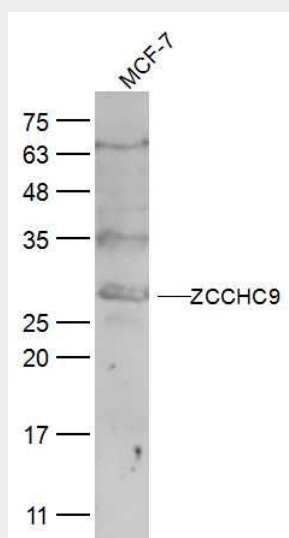
Cellular Location

Nucleus, nucleolus. Nucleus. Note=Expressed throughout the nucleus and concentrated mainly in the nucleolus

ZCCHC9 Polyclonal Antibody - Protocols

Provided below are standard protocols that you may find useful for product applications.

- [Western Blot](#)
- [Blocking Peptides](#)
- [Dot Blot](#)
- [Immunohistochemistry](#)
- [Immunofluorescence](#)
- [Immunoprecipitation](#)
- [Flow Cytometry](#)
- [Cell Culture](#)

ZCCHC9 Polyclonal Antibody - Images**Sample:**

MCF-7(Human) Cell Lysate at 30 ug

Primary: Anti-ZCCHC9 (bs-18563R) at 1/300 dilution

Secondary: IRDye800CW Goat Anti-Rabbit IgG at 1/20000 dilution

Predicted band size: 30 kD

Observed band size: 30 kD