

**ZCPW1 Polyclonal Antibody**  
**Purified Rabbit Polyclonal Antibody (Pab)**  
**Catalog # AP57153**

**Specification**

**ZCPW1 Polyclonal Antibody - Product Information**

Application	IHC-P, IHC-F, IF, ICC, E
Primary Accession	<a href="#">O9H0M4</a>
Host	Rabbit
Clonality	Polyclonal
Calculated MW	72 KDa
Physical State	Liquid
Immunogen	KLH conjugated synthetic peptide derived from human ZCPW1
Epitope Specificity	401-500/648
Isotype	IgG
<b>Purity</b>	
affinity purified by Protein A	
Buffer	0.01M TBS (pH7.4) with 1% BSA, 0.02% Proclin300 and 50% Glycerol.
SIMILARITY	Contains 1 CW-type zinc finger. Contains 1 PWWP domain.
Important Note	This product as supplied is intended for research use only, not for use in human, therapeutic or diagnostic applications.

**Background Descriptions**

ZCPW1 contains 1 CW-type zinc finger and 1 PWWP domain. There are four named isoforms.

**ZCPW1 Polyclonal Antibody - Additional Information**

**Gene ID** 55063

**Other Names**

Zinc finger CW-type PWWP domain protein 1, ZCWPW1

**Dilution**

<span class = "dilution\_IHC-P">IHC-P~~N/A</span><br \><span class = "dilution\_IHC-F">IHC-F~~N/A</span><br \><span class = "dilution\_IF">IF~~1:50~200</span><br \><span class = "dilution\_ICC">ICC~~N/A</span><br \><span class = "dilution\_E">E~~N/A</span>

**Storage**

Store at -20 °C for one year. Avoid repeated freeze/thaw cycles. When reconstituted in sterile pH 7.4 0.01M PBS or diluent of antibody the antibody is stable for at least two weeks at 2-4 °C.

**ZCPW1 Polyclonal Antibody - Protein Information**

**Name** ZCWPW1

**Function**

Dual histone methylation reader specific for PRDM9-catalyzed histone marks (H3K4me3 and H3K36me3) (PubMed:<a href="http://www.uniprot.org/citations/20826339" target="\_blank">20826339</a>, PubMed:<a href="http://www.uniprot.org/citations/32744506" target="\_blank">32744506</a>). Facilitates the repair of PRDM9-induced meiotic double-strand breaks (DSBs) (By similarity). Essential for male fertility and spermatogenesis (By similarity). Required for meiosis prophase I progression in male but not in female germ cells (By similarity).

**Cellular Location**

Nucleus {ECO:0000250|UniProtKB:Q6IR42}. Chromosome {ECO:0000250|UniProtKB:Q6IR42}

**Tissue Location**

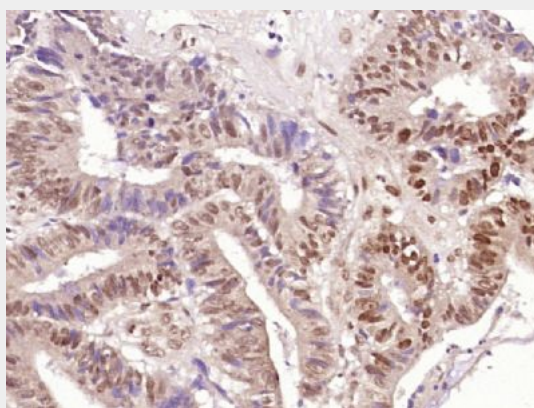
Testis.

**ZCPW1 Polyclonal Antibody - Protocols**

Provided below are standard protocols that you may find useful for product applications.

- [Western Blot](#)
- [Blocking Peptides](#)
- [Dot Blot](#)
- [Immunohistochemistry](#)
- [Immunofluorescence](#)
- [Immunoprecipitation](#)
- [Flow Cytometry](#)
- [Cell Culture](#)

**ZCPW1 Polyclonal Antibody - Images**



Paraformaldehyde-fixed, paraffin embedded (Human colon cancer); Antigen retrieval by boiling in sodium citrate buffer (pH6.0) for 15min; Block endogenous peroxidase by 3% hydrogen peroxide for 20 minutes; Blocking buffer (normal goat serum) at 37°C for 30min; Antibody incubation with (ZCPW1) Polyclonal Antibody, Unconjugated (bs-18566R) at 1:400 overnight at 4°C, followed by operating according to SP Kit(Rabbit) (sp-0023) instructions and DAB staining.