

zcrb1 Polyclonal Antibody
Purified Rabbit Polyclonal Antibody (Pab)
Catalog # AP57154**Specification****zcrb1 Polyclonal Antibody - Product Information**

Application	WB, IHC-P, IHC-F, IF, ICC, E
Primary Accession	Q8TBF4
Reactivity	Rat, Pig, Dog, Bovine
Host	Rabbit
Clonality	Polyclonal
Calculated MW	25 KDa
Physical State	Liquid
Immunogen	KLH conjugated synthetic peptide derived from human zcrb1
Epitope Specificity	1-100/217
Isotype	IgG
Purity	
affinity purified by Protein A	
Buffer	0.01M TBS (pH7.4) with 1% BSA, 0.02% Proclin300 and 50% Glycerol.
SUBCELLULAR LOCATION	Nucleus
SIMILARITY	Contains 1 CCHC-type zinc finger. Contains 1 RRM (RNA recognition motif) domain.
SUBUNIT	Component of the U11/U12 snRNPs that are part of the U12-type spliceosome.
Important Note	This product as supplied is intended for research use only, not for use in human, therapeutic or diagnostic applications.

Background Descriptions

Pre-mRNA splicing is catalyzed by the spliceosome. U12-type spliceosome binds U12-type pre-mRNAs and recognizes the 5' splice site and branch-point sequence. U11 and U12 snRNPs are components of U12-type spliceosome and function as a molecular bridge connecting both ends of the intron. The protein encoded by this gene contains a RNA recognition motif. It was identified as one of the protein components of U11/U12 snRNPs. This protein and many other U11/U12 snRNP proteins are highly conserved in organisms known to contain U12-type introns. These proteins have been shown to be essential for cell viability, suggesting the key roles in U12-type splicing. [provided by RefSeq, Jul 2008]

zcrb1 Polyclonal Antibody - Additional Information**Gene ID** 85437**Other Names**

Zinc finger CCHC-type and RNA-binding motif-containing protein 1, U11/U12 small nuclear ribonucleoprotein 31 kDa protein, U11/U12 snRNP 31 kDa protein, U11/U12-31K, ZCRB1

Dilution

WB~~1:1000<br \>IHC-P~~N/A<br \>IHC-F~~N/A<br \>IF~~1:50~200<br \>ICC~~N/A<br \>E~~N/A

Storage

Store at -20 °C for one year. Avoid repeated freeze/thaw cycles. When reconstituted in sterile pH 7.4 0.01M PBS or diluent of antibody the antibody is stable for at least two weeks at 2-4 °C.

zcrb1 Polyclonal Antibody - Protein Information

Name ZCRB1

Cellular Location

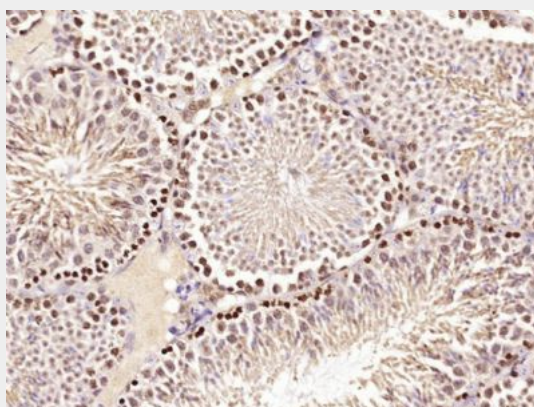
Nucleus, nucleoplasm

zcrb1 Polyclonal Antibody - Protocols

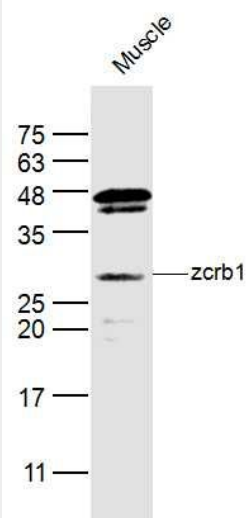
Provided below are standard protocols that you may find useful for product applications.

- [Western Blot](#)
- [Blocking Peptides](#)
- [Dot Blot](#)
- [Immunohistochemistry](#)
- [Immunofluorescence](#)
- [Immunoprecipitation](#)
- [Flow Cytometry](#)
- [Cell Culture](#)

zcrb1 Polyclonal Antibody - Images



Paraformaldehyde-fixed, paraffin embedded (Mouse testis); Antigen retrieval by boiling in sodium citrate buffer (pH6.0) for 15min; Block endogenous peroxidase by 3% hydrogen peroxide for 20 minutes; Blocking buffer (normal goat serum) at 37°C for 30min; Antibody incubation with (zcrb1) Polyclonal Antibody, Unconjugated (bs-18567R) at 1:400 overnight at 4°C, followed by operating according to SP Kit(Rabbit) (sp-0023) instructions and DAB staining.



Sample:

Muscle (Mouse) Lysate at 40 ug

Primary: Anti- zcrb1 (bs-18567R) at 1/300 dilution

Secondary: IRDye800CW Goat Anti-Rabbit IgG at 1/20000 dilution

Predicted band size: 25 kD

Observed band size: 25 kD