

LYRM7 Polyclonal Antibody
Purified Rabbit Polyclonal Antibody (Pab)
Catalog # AP57166

Specification

LYRM7 Polyclonal Antibody - Product Information

Application	WB, IHC-P, IHC-F, IF, ICC, E
Primary Accession	Q5U5X0
Reactivity	Rat, Pig, Dog, Bovine
Host	Rabbit
Clonality	Polyclonal
Calculated MW	12 KDa
Physical State	Liquid
Immunogen	KLH conjugated synthetic peptide derived from human LYRM7
Epitope Specificity	1-80/106
Isotype	IgG
Purity	
affinity purified by Protein A	
Buffer	0.01M TBS (pH7.4) with 1% BSA, 0.02% Proclin300 and 50% Glycerol.
SUBCELLULAR LOCATION	Mitochondrial
SIMILARITY	Belongs to the complex I LYR family.
Important Note	This product as supplied is intended for research use only, not for use in human, therapeutic or diagnostic applications.

Background Descriptions

Inner mitochondrial membrane complex III (CIII) is the main enzyme complex in the mitochondrial respiratory chain, and Rieske Fe-S protein (UQCRFS1) is the last catalytic subunit added to the complex. The protein encoded by this gene is a nuclear-encoded mitochondrial matrix protein that stabilizes UQCRFS1 and chaperones it to the CIII complex. Defects in this gene are a cause of mitochondrial complex III deficiency, nuclear type 8. Three transcript variants encoding two different isoforms have been found for this gene. [provided by RefSeq, Jun 2014]

LYRM7 Polyclonal Antibody - Additional Information

Gene ID 90624

Other Names

Complex III assembly factor LYRM7, LYR motif-containing protein 7, LYRM7, C5orf31, MZM1L

Dilution

WB~~1:1000<br \>IHC-P~~N/A<br \>IHC-F~~N/A<br \>IF~~1:50~200<br \>ICC~~N/A<br \>E~~N/A

Storage

Store at -20 °C for one year. Avoid repeated freeze/thaw cycles. When reconstituted in sterile pH 7.4 0.01M PBS or diluent of antibody the antibody is stable for at least two weeks at 2-4 °C.

LYRM7 Polyclonal Antibody - Protein Information

Name LYRM7

Synonyms C5orf31, MZM1L

Function

Assembly factor required for Rieske Fe-S protein UQCRC1 incorporation into the cytochrome b-c1 (CIII) complex. Functions as a chaperone, binding to this subunit within the mitochondrial matrix and stabilizing it prior to its translocation and insertion into the late CIII dimeric intermediate within the mitochondrial inner membrane.

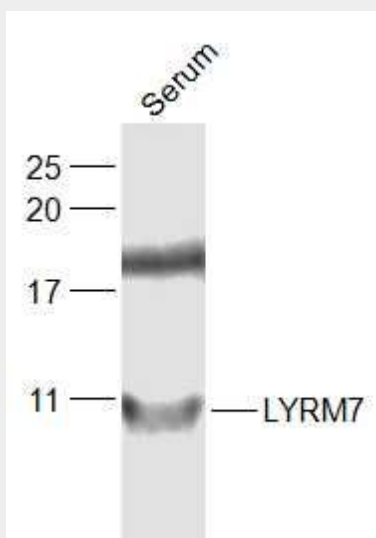
Cellular Location

Mitochondrion matrix

LYRM7 Polyclonal Antibody - Protocols

Provided below are standard protocols that you may find useful for product applications.

- [Western Blot](#)
- [Blocking Peptides](#)
- [Dot Blot](#)
- [Immunohistochemistry](#)
- [Immunofluorescence](#)
- [Immunoprecipitation](#)
- [Flow Cytometry](#)
- [Cell Culture](#)

LYRM7 Polyclonal Antibody - Images

Sample:

Serum(Human) at 30 ug
Primary: Anti-LYRM7 (bs-18586R) at 1/1000 dilution
Secondary: IRDye800CW Goat Anti-Rabbit IgG at 1/20000 dilution
Predicted band size: 12 kD
Observed band size: 10 kD