

LYZL2 Polyclonal Antibody
Purified Rabbit Polyclonal Antibody (Pab)
Catalog # AP57171

Specification

LYZL2 Polyclonal Antibody - Product Information

Application	IHC-P, IHC-F, IF, ICC
Primary Accession	Q7Z4W2
Reactivity	Rat
Host	Rabbit
Clonality	Polyclonal
Calculated MW	15 KDa
Physical State	Liquid
Immunogen	KLH conjugated synthetic peptide derived from human LYZL2
Epitope Specificity	81-148/148
Isotype	IgG
Purity	
affinity purified by Protein A	
Buffer	0.01M TBS (pH7.4) with 1% BSA, 0.02% Proclin300 and 50% Glycerol.
SUBCELLULAR LOCATION	Secreted.
SIMILARITY	Belongs to the glycosyl hydrolase 22 family.
SUBUNIT	Monomer.
Important Note	This product as supplied is intended for research use only, not for use in human, therapeutic or diagnostic applications.

Background Descriptions

Lysozymes (see LYZ; MIM 153450), especially C-type lysozymes, are well-recognized bacteriolytic factors widely distributed in the animal kingdom and play a mainly protective role in host defense. LYZL2 is a member of a family of lysozyme-like genes (Zhang et al., 2005 [PubMed 16014814]).[supplied by OMIM, Apr 2009]

LYZL2 Polyclonal Antibody - Additional Information

Gene ID 119180

Other Names

Lysozyme-like protein 2, Lysozyme-2, 3.2.1.17, LYZL2

Target/Specificity

Expressed in testis, epididymis and placenta.

Dilution

IHC-P~~N/A<br \>IHC-F~~N/A<br \>IF~~1:50~200<br \>ICC~~N/A

Storage

Store at -20 °C for one year. Avoid repeated freeze/thaw cycles. When reconstituted in sterile pH 7.4 0.01M PBS or diluent of antibody the antibody is stable for at least two weeks at 2-4 °C.

LYZL2 Polyclonal Antibody - Protein Information

Name LYZL2

Cellular Location

Secreted.

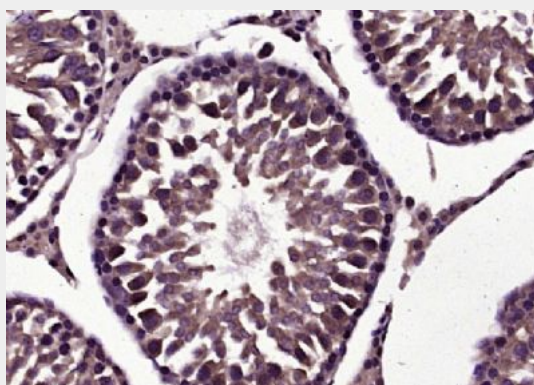
Tissue Location

Expressed in testis, epididymis and placenta.

LYZL2 Polyclonal Antibody - Protocols

Provided below are standard protocols that you may find useful for product applications.

- [Western Blot](#)
- [Blocking Peptides](#)
- [Dot Blot](#)
- [Immunohistochemistry](#)
- [Immunofluorescence](#)
- [Immunoprecipitation](#)
- [Flow Cytometry](#)
- [Cell Culture](#)

LYZL2 Polyclonal Antibody - Images

Paraformaldehyde-fixed, paraffin embedded (Rat testis); Antigen retrieval by boiling in sodium citrate buffer (pH6.0) for 15min; Block endogenous peroxidase by 3% hydrogen peroxide for 20 minutes; Blocking buffer (normal goat serum) at 37°C for 30min; Antibody incubation with (LYZL2) Polyclonal Antibody, Unconjugated (bs-18594R) at 1:400 overnight at 4°C, followed by operating according to SP Kit(Rabbit) (sp-0023) instructions and DAB staining.