

SARDH Polyclonal Antibody
Purified Rabbit Polyclonal Antibody (Pab)
Catalog # AP57175**Specification**

SARDH Polyclonal Antibody - Product Information

Application	IHC-P, IHC-F, IF, ICC, E
Primary Accession	O9UL12
Reactivity	Rat, Pig, Dog
Host	Rabbit
Clonality	Polyclonal
Calculated MW	99 KDa
Physical State	Liquid
Immunogen	KLH conjugated synthetic peptide derived from human SARDH
Epitope Specificity	101-200/918
Isotype	IgG
Purity	
affinity purified by Protein A	
Buffer	0.01M TBS (pH7.4) with 1% BSA, 0.02% Proclin300 and 50% Glycerol.
SUBCELLULAR LOCATION	Mitochondrion matrix (By similarity)
SIMILARITY	Belongs to the GcvT family.
DISEASE	Sarcosinemia (SARCOS) [MIM:268900]: A metabolic disorder characterized by an increased concentration of sarcosine in plasma and an increased excretion of sarcosine in urine. Sarcosinemia is most probably a benign condition without significant clinical problems. Some reports have associated sarcosinemia with mental retardation and neurologic problems. This product as supplied is intended for research use only, not for use in human, therapeutic or diagnostic applications.
Important Note	

Background Descriptions

This gene encodes an enzyme localized to the mitochondrial matrix which catalyzes the oxidative demethylation of sarcosine. This enzyme is distinct from another mitochondrial matrix enzyme, dimethylglycine dehydrogenase, which catalyzes a reaction resulting in the formation of sarcosine. Mutations in this gene are associated with sarcosinemia. Alternatively spliced transcript variants have been described. [provided by RefSeq, Oct 2008]

SARDH Polyclonal Antibody - Additional Information**Gene ID** 1757**Other Names**

Sarcosine dehydrogenase, mitochondrial, SarDH, 1.5.8.3, BPR-2, SARDH, DMGDHL1

Dilution

IHC-P ~ ~ N/A
IHC-F ~ ~ N/A
IF ~ ~ 1:50 ~ 200
ICC ~ ~ N/A
E ~ ~ N/A

Storage

Store at -20 °C for one year. Avoid repeated freeze/thaw cycles. When reconstituted in sterile pH 7.4 0.01M PBS or diluent of antibody the antibody is stable for at least two weeks at 2-4 °C.

SARDH Polyclonal Antibody - Protein Information

Name SARDH ([HGNC:10536](#))

Synonyms DMGDHL1

Function

Catalyzes the last step of the oxidative degradation of choline to glycine. Converts sarcosine into glycine.

Cellular Location

Mitochondrion matrix {ECO:0000250|UniProtKB:Q64380}

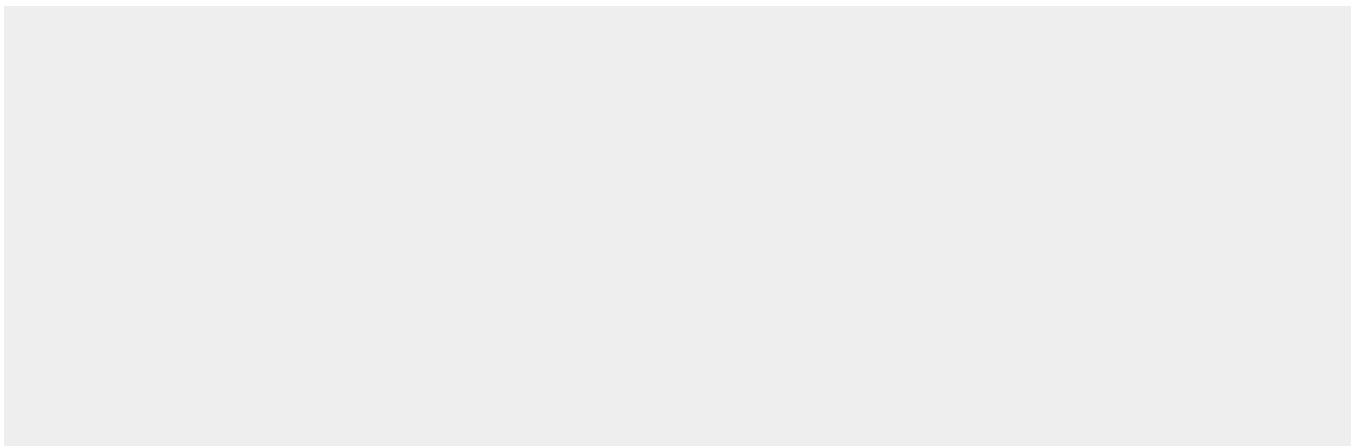
Tissue Location

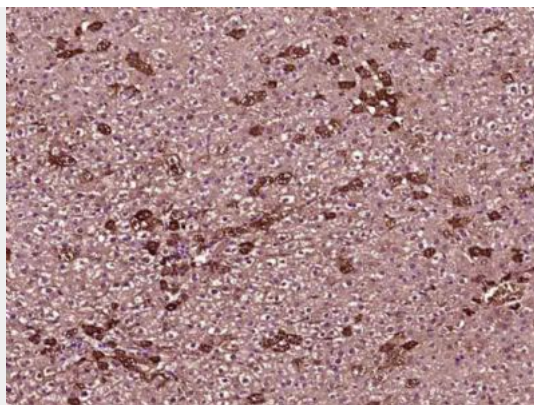
Expressed in pancreas, liver and kidney.

SARDH Polyclonal Antibody - Protocols

Provided below are standard protocols that you may find useful for product applications.

- [Western Blot](#)
- [Blocking Peptides](#)
- [Dot Blot](#)
- [Immunohistochemistry](#)
- [Immunofluorescence](#)
- [Immunoprecipitation](#)
- [Flow Cytometry](#)
- [Cell Culture](#)

SARDH Polyclonal Antibody - Images



Paraformaldehyde-fixed, paraffin embedded (Rat liver); Antigen retrieval by boiling in sodium citrate buffer (pH6.0) for 15min; Block endogenous peroxidase by 3% hydrogen peroxide for 20 minutes; Blocking buffer (normal goat serum) at 37°C for 30min; Antibody incubation with (SARDH) Polyclonal Antibody, Unconjugated (bs-18606R) at 1:400 overnight at 4°C, followed by operating according to SP Kit(Rabbit) (sp-0023) instructions and DAB staining.