

MAGIX Polyclonal Antibody
Purified Rabbit Polyclonal Antibody (Pab)
Catalog # AP57187**Specification****MAGIX Polyclonal Antibody - Product Information**

| | |
|--------------------------------|---|
| Application | WB, IHC-P, IHC-F, IF, ICC, E |
| Primary Accession | Q9H6Y5 |
| Host | Rabbit |
| Clonality | Polyclonal |
| Calculated MW | 35 KDa |
| Physical State | Liquid |
| Immunogen | KLH conjugated synthetic peptide derived from human MAGIX |
| Epitope Specificity | 201-300/334 |
| Isotype | IgG |
| Purity | |
| affinity purified by Protein A | |
| Buffer | 0.01M TBS (pH7.4) with 1% BSA, 0.02% Proclin300 and 50% Glycerol. |
| SIMILARITY | Contains 1 PDZ (DHR) domain. |
| Important Note | This product as supplied is intended for research use only, not for use in human, therapeutic or diagnostic applications. |

Background Descriptions

MAGIX is a 334 amino acid protein that contains one PDZ (DHR) domain and exists as three alternatively spliced isoforms. The gene encoding MAGIX maps to human chromosome Xp11.23. Chromosome X consists of about 153 million base pairs and nearly 1,000 genes. The combination of a X and Y chromosome lead to normal male development while two copies of X lead to normal female development. There are a number of conditions related to an unusual number and combination of sex chromosomes being inherited, including Turner's syndrome, Klinefelter's syndrome and Triple X syndrome. Color blindness, hemophilia, and Duchenne muscular dystrophy are well known X chromosome-linked conditions which affect males more frequently as males carry a single X chromosome.

MAGIX Polyclonal Antibody - Additional Information**Gene ID** 79917**Other Names**

PDZ domain-containing protein MAGIX, MAGIX

Dilution

WB~~1:1000<br \>IHC-P~~N/A<br \>IHC-F~~N/A<br \>IF~~1:50~200<br \>ICC~~N/A<br \>E~~N/A

Format

0.01M TBS(pH7.4), 0.09% (W/V) sodium azide and 50% Glyce

Storage

Store at -20 °C for one year. Avoid repeated freeze/thaw cycles. When reconstituted in sterile pH 7.4 0.01M PBS or diluent of antibody the antibody is stable for at least two weeks at 2-4 °C.

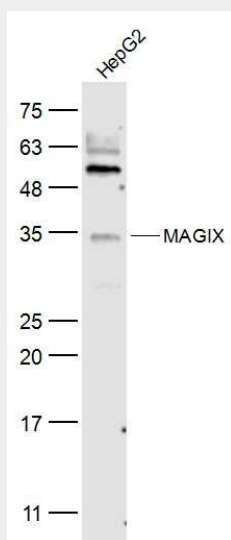
MAGIX Polyclonal Antibody - Protein Information

Name MAGIX

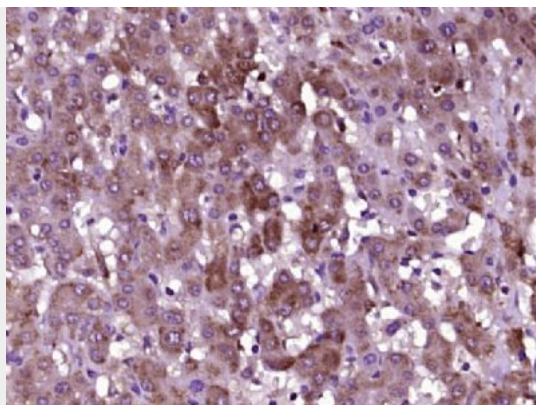
MAGIX Polyclonal Antibody - Protocols

Provided below are standard protocols that you may find useful for product applications.

- [Western Blot](#)
- [Blocking Peptides](#)
- [Dot Blot](#)
- [Immunohistochemistry](#)
- [Immunofluorescence](#)
- [Immunoprecipitation](#)
- [Flow Cytometry](#)
- [Cell Culture](#)

MAGIX Polyclonal Antibody - Images**Sample:**

HepG2(Human) Cell Lysate at 30 ug
Primary: Anti-MAGIX (bs-18630R) at 1/300 dilution
Secondary: IRDye800CW Goat Anti-Rabbit IgG at 1/20000 dilution
Predicted band size: 35 kD
Observed band size: 35 kD



Paraformaldehyde-fixed, paraffin embedded (human liver tissue); Antigen retrieval by boiling in sodium citrate buffer (pH6.0) for 15min; Block endogenous peroxidase by 3% hydrogen peroxide for 20 minutes; Blocking buffer (normal goat serum) at 37°C for 30min; Antibody incubation with (MAGIX) Polyclonal Antibody, Unconjugated (bs-18630R) at 1:400 overnight at 4°C, followed by operating according to SP Kit(Rabbit) (sp-0023) instructions and DAB staining.