

MAN2B1 Polyclonal Antibody
Purified Rabbit Polyclonal Antibody (Pab)
Catalog # AP57198**Specification****MAN2B1 Polyclonal Antibody - Product Information**

Application	IHC-P, IHC-F, IF, ICC, E
Primary Accession	O00754
Reactivity	Rat, Pig, Dog, Bovine
Host	Rabbit
Clonality	Polyclonal
Calculated MW	109 KDa
Physical State	Liquid
Immunogen	KLH conjugated synthetic peptide derived from human MAN2B1
Epitope Specificity	151-250/1011
Isotype	IgG
Purity	
affinity purified by Protein A	
Buffer	0.01M TBS (pH7.4) with 1% BSA, 0.02% Proclin300 and 50% Glycerol.
SUBCELLULAR LOCATION	Lysosome.
SIMILARITY	Belongs to the glycosyl hydrolase 38 family.
Post-translational modifications	First processed into 3 peptides of 70 kDa, 42 kDa (D) and 13/15 kDa (E). The 70 kDa peptide is further processed into three peptides (A, B and C). The A, B and C peptides are disulfide-linked.
DISEASE	Mannosidosis, alpha B, lysosomal (MANSA) [MIM:248500]: A lysosomal storage disease characterized by accumulation of unbranched oligosaccharide chains. This accumulation is expressed histologically as cytoplasmic vacuolation predominantly in the CNS and parenchymatous organs. Depending on the clinical findings at the age of onset, a severe infantile (type I) and a mild juvenile (type II) form of alpha-mannosidosis are recognized. There is considerable variation in the clinical expression with mental retardation, recurrent infections, impaired hearing and Hurler-like skeletal changes being the most consistent abnormalities. Note: The disease is caused by mutations affecting the gene represented in this entry.
Important Note	This product as supplied is intended for research use only, not for use in human, therapeutic or diagnostic applications.

Background Descriptions

This gene encodes an enzyme that hydrolyzes terminal, non-reducing alpha-D-mannose residues in alpha-D-mannosides. Its activity is necessary for the catabolism of N-linked carbohydrates released during glycoprotein turnover and it is member of family 38 of glycosyl hydrolases. The full length protein is processed in two steps. First, a 49 aa leader sequence is cleaved off and the remainder of the protein is processed into 3 peptides of 70 kDa, 42 kDa (D) and 13/15 kDa (E). Next, the 70 kDa peptide is further processed into three peptides (A, B and C). The A, B and C peptides are disulfide-linked. Defects in this gene have been associated with lysosomal alpha-mannosidosis. Alternatively spliced transcript variants encoding different isoforms have been found for this gene.[provided by RefSeq, Mar 2010]

MAN2B1 Polyclonal Antibody - Additional Information

Gene ID 4125

Other Names

Lysosomal alpha-mannosidase, Laman, 3.2.1.24, Lysosomal acid alpha-mannosidase, Mannosidase alpha class 2B member 1, Mannosidase alpha-B, Lysosomal alpha-mannosidase A peptide, Lysosomal alpha-mannosidase B peptide, Lysosomal alpha-mannosidase C peptide, Lysosomal alpha-mannosidase D peptide, Lysosomal alpha-mannosidase E peptide, MAN2B1, LAMAN, MANB

Dilution

IHC-P~N/A
IHC-F~N/A
IF~1:50~200
ICC~N/A
E~N/A

Storage

Store at -20 °C for one year. Avoid repeated freeze/thaw cycles. When reconstituted in sterile pH 7.4 0.01M PBS or diluent of antibody the antibody is stable for at least two weeks at 2-4 °C.

MAN2B1 Polyclonal Antibody - Protein Information

Name MAN2B1

Synonyms LAMAN, MANB

Function

Necessary for the catabolism of N-linked carbohydrates released during glycoprotein turnover. Cleaves all known types of alpha-mannosidic linkages.

Cellular Location

Lysosome.

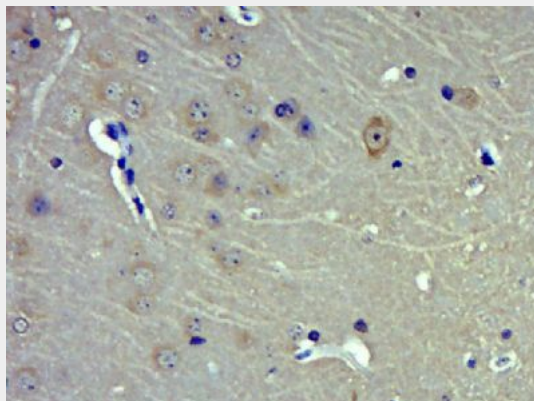
MAN2B1 Polyclonal Antibody - Protocols

Provided below are standard protocols that you may find useful for product applications.

- [Western Blot](#)
- [Blocking Peptides](#)
- [Dot Blot](#)

- [Immunohistochemistry](#)
- [Immunofluorescence](#)
- [Immunoprecipitation](#)
- [Flow Cytometry](#)
- [Cell Culture](#)

MAN2B1 Polyclonal Antibody - Images



Paraformaldehyde-fixed, paraffin embedded (Mouse brain); Antigen retrieval by boiling in sodium citrate buffer (pH6.0) for 15min; Block endogenous peroxidase by 3% hydrogen peroxide for 20 minutes; Blocking buffer (normal goat serum) at 37°C for 30min; Antibody incubation with (MAN2B1) Polyclonal Antibody, Unconjugated (bs-18647R) at 1:400 overnight at 4°C, followed by operating according to SP Kit(Rabbit) (sp-0023) instructions and DAB staining.