

MANEA Polyclonal Antibody
Purified Rabbit Polyclonal Antibody (Pab)
Catalog # AP57201**Specification****MANEA Polyclonal Antibody - Product Information**

Application	IHC-P, IHC-F, IF, ICC, E
Primary Accession	Q5SRI9
Reactivity	Rat, Pig, Cat, Bovine
Host	Rabbit
Clonality	Polyclonal
Calculated MW	54 KDa
Physical State	Liquid
Immunogen	KLH conjugated synthetic peptide derived from human MANEA
Epitope Specificity	61-160/462
Isotype	IgG
Purity	
affinity purified by Protein A	
Buffer	0.01M TBS (pH7.4) with 1% BSA, 0.02% Proclin300 and 50% Glycerol.
SUBCELLULAR LOCATION	Golgi apparatus membrane.
SIMILARITY	Belongs to the glycosyl hydrolase 99 family.
Post-translational modifications	Undergoes proteolytic cleavage in the C-terminal region.
Important Note	This product as supplied is intended for research use only, not for use in human, therapeutic or diagnostic applications.

Background Descriptions

N-glycosylation of proteins is initiated in the endoplasmic reticulum (ER) by the transfer of the preassembled oligosaccharide glucose-3-mannose-9-N-acetylglucosamine-2 from dolichyl pyrophosphate to acceptor sites on the target protein by an oligosaccharyltransferase complex. This core oligosaccharide is sequentially processed by several ER glycosidases and by an endomannosidase (E.C. 3.2.1.130), such as MANEA, in the Golgi. MANEA catalyzes the release of mono-, di-, and triglucosylmannose oligosaccharides by cleaving the alpha-1,2-mannosidic bond that links them to high-mannose glycans (Hamilton et al., 2005 [PubMed 15677381]).[supplied by OMIM, Sep 2008]

MANEA Polyclonal Antibody - Additional Information**Gene ID** 79694**Other Names**

Glycoprotein endo-alpha-1, 2-mannosidase, Endo-alpha mannosidase, Endomannosidase, hEndo, 3.2.1.130, Mandaselin, MANEA

Target/Specificity

Highly expressed in the liver and kidney. Expressed at lower levels in muscle, pancreas, heart, placenta, lung and brain.

Dilution

IHC-P~~N/A
IHC-F~~N/A
IF~~1:50~200
ICC~~N/A
E~~N/A

Format

0.01M TBS(pH7.4), 0.09% (W/V) sodium azide and 50% Glyce

Storage

Store at -20 °C for one year. Avoid repeated freeze/thaw cycles. When reconstituted in sterile pH 7.4 0.01M PBS or diluent of antibody the antibody is stable for at least two weeks at 2-4 °C.

MANEA Polyclonal Antibody - Protein Information

Name MANEA

Cellular Location

Golgi apparatus membrane; Single-pass type II membrane protein

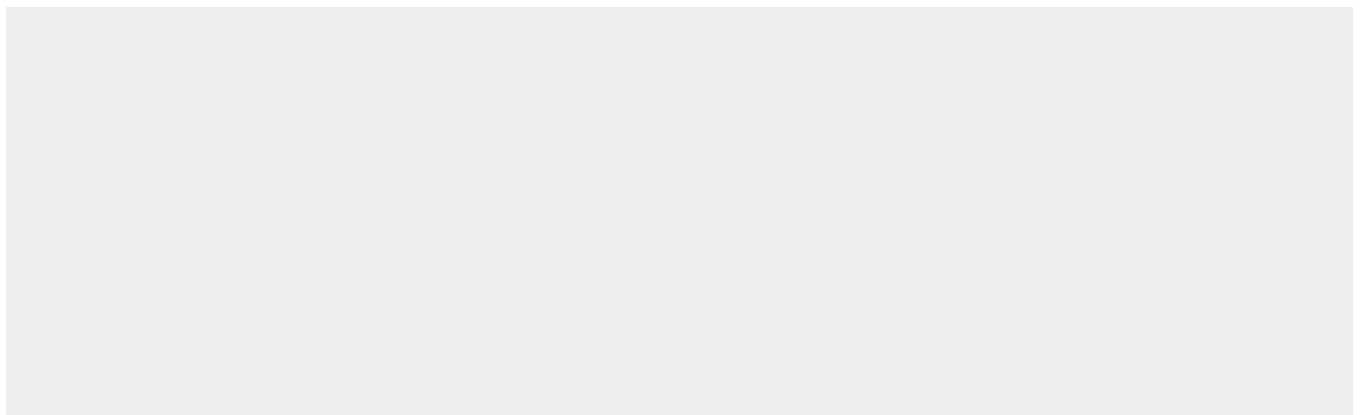
Tissue Location

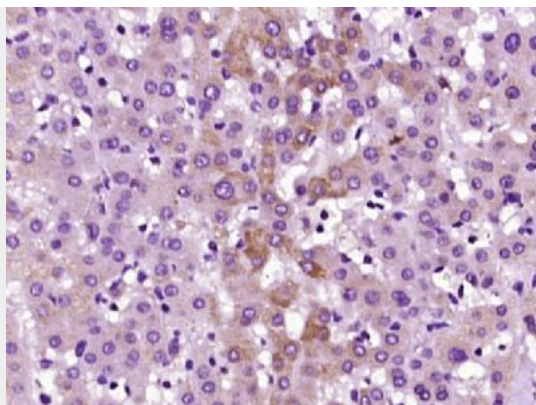
Highly expressed in the liver and kidney. Expressed at lower levels in muscle, pancreas, heart, placenta, lung and brain

MANEA Polyclonal Antibody - Protocols

Provided below are standard protocols that you may find useful for product applications.

- [Western Blot](#)
- [Blocking Peptides](#)
- [Dot Blot](#)
- [Immunohistochemistry](#)
- [Immunofluorescence](#)
- [Immunoprecipitation](#)
- [Flow Cytometry](#)
- [Cell Culture](#)

MANEA Polyclonal Antibody - Images



Paraformaldehyde-fixed, paraffin embedded (human liver tissue); Antigen retrieval by boiling in sodium citrate buffer (pH6.0) for 15min; Block endogenous peroxidase by 3% hydrogen peroxide for 20 minutes; Blocking buffer (normal goat serum) at 37°C for 30min; Antibody incubation with (MANEA) Polyclonal Antibody, Unconjugated (bs-18652R) at 1:400 overnight at 4°C, followed by operating according to SP Kit(Rabbit) (sp-0023) instructions and DAB staining.