

**MBD4 Polyclonal Antibody**  
**Purified Rabbit Polyclonal Antibody (Pab)**  
**Catalog # AP57219****Specification**

---

**MBD4 Polyclonal Antibody - Product Information**

Application	WB
Primary Accession	<a href="#">O95243</a>
Reactivity	Rat, Pig, Bovine
Host	Rabbit
Clonality	Polyclonal
Calculated MW	66051

**MBD4 Polyclonal Antibody - Additional Information****Gene ID** 8930**Other Names**

Methyl-CpG-binding domain protein 4, 3.2.2.-, Methyl-CpG-binding endonuclease 1, Methyl-CpG-binding protein MBD4, Mismatch-specific DNA N-glycosylase, MBD4, MED1

**Format**

0.01M TBS(pH7.4), 0.09% (W/V) sodium azide and 50% Glyce

**Storage**

Store at -20 °C for one year. Avoid repeated freeze/thaw cycles. When reconstituted in sterile pH 7.4 0.01M PBS or diluent of antibody the antibody is stable for at least two weeks at 2-4 °C.

**MBD4 Polyclonal Antibody - Protein Information****Name** MBD4 ([HGNC:6919](#))**Function**

Mismatch-specific DNA N-glycosylase involved in DNA repair. Has thymine glycosylase activity and is specific for G:T mismatches within methylated and unmethylated CpG sites. Can also remove uracil or 5-fluorouracil in G:U mismatches. Has no lyase activity. Was first identified as methyl-CpG-binding protein.

**Cellular Location**

Nucleus.

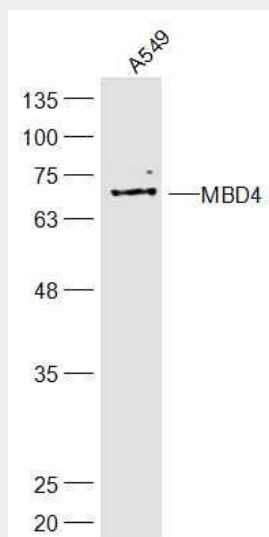
**MBD4 Polyclonal Antibody - Protocols**

Provided below are standard protocols that you may find useful for product applications.

- [Western Blot](#)

- [Blocking Peptides](#)
- [Dot Blot](#)
- [Immunohistochemistry](#)
- [Immunofluorescence](#)
- [Immunoprecipitation](#)
- [Flow Cytometry](#)
- [Cell Culture](#)

#### **MBD4 Polyclonal Antibody - Images**



**Sample:**

A549(Human) Cell Lysate at 30 ug

Primary: Anti-MBD4 (bs-18704R) at 1/300 dilution

Secondary: IRDye800CW Goat Anti-Rabbit IgG at 1/20000 dilution

Predicted band size: 66kD

Observed band size: 66 kD