

MED28 Polyclonal Antibody
Purified Rabbit Polyclonal Antibody (Pab)
Catalog # AP57239**Specification**

MED28 Polyclonal Antibody - Product Information

Application	IHC-P
Primary Accession	Q9H204
Reactivity	Rat, Pig, Dog, Bovine
Host	Rabbit
Clonality	Polyclonal
Calculated MW	19520

MED28 Polyclonal Antibody - Additional Information**Gene ID** 80306**Other Names**

Mediator of RNA polymerase II transcription subunit 28, Endothelial-derived protein 1, Mediator complex subunit 28, Merlin and Grb2-interacting cytoskeletal protein, Magicin, Tumor angiogenesis marker EG-1, MED28, EG1

Format

0.01M TBS(pH7.4), 0.09% (W/V) sodium azide and 50% Glyce

Storage

Store at -20 °C for one year. Avoid repeated freeze/thaw cycles. When reconstituted in sterile pH 7.4 0.01M PBS or diluent of antibody the antibody is stable for at least two weeks at 2-4 °C.

MED28 Polyclonal Antibody - Protein Information**Name** MED28**Synonyms** EG1**Function**

Component of the Mediator complex, a coactivator involved in the regulated transcription of nearly all RNA polymerase II-dependent genes. Mediator functions as a bridge to convey information from gene-specific regulatory proteins to the basal RNA polymerase II transcription machinery. Mediator is recruited to promoters by direct interactions with regulatory proteins and serves as a scaffold for the assembly of a functional preinitiation complex with RNA polymerase II and the general transcription factors. May be part of a complex containing NF2/merlin that participates in cellular signaling to the actin cytoskeleton downstream of tyrosine kinase signaling pathways.

Cellular Location

Nucleus. Cytoplasm. Membrane; Peripheral membrane protein Note=According to PubMed:15467741, it is cytoplasmic and mainly membrane-associated

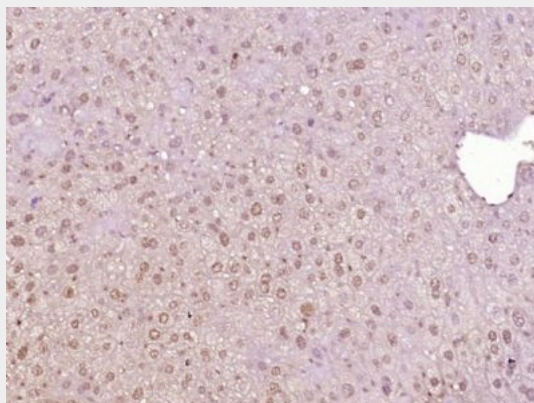
Tissue Location

Widely expressed. Highly expressed in vascular tissues such as placenta, testis and liver

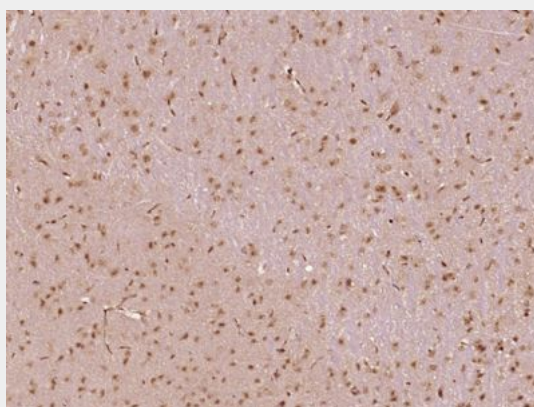
MED28 Polyclonal Antibody - Protocols

Provided below are standard protocols that you may find useful for product applications.

- [Western Blot](#)
- [Blocking Peptides](#)
- [Dot Blot](#)
- [Immunohistochemistry](#)
- [Immunofluorescence](#)
- [Immunoprecipitation](#)
- [Flow Cytometry](#)
- [Cell Culture](#)

MED28 Polyclonal Antibody - Images

Paraformaldehyde-fixed, paraffin embedded (Mouse liver); Antigen retrieval by boiling in sodium citrate buffer (pH6.0) for 15min; Block endogenous peroxidase by 3% hydrogen peroxide for 20 minutes; Blocking buffer (normal goat serum) at 37°C for 30min; Antibody incubation with (MED28) Polyclonal Antibody, Unconjugated (bs-18767R) at 1:400 overnight at 4°C, followed by operating according to SP Kit(Rabbit) (sp-0023) instructions and DAB staining.



Paraformaldehyde-fixed, paraffin embedded (Mouse brain); Antigen retrieval by boiling in sodium citrate buffer (pH6.0) for 15min; Block endogenous peroxidase by 3% hydrogen peroxide for 20 minutes; Blocking buffer (normal goat serum) at 37°C for 30min; Antibody incubation with (MED28) Polyclonal Antibody, Unconjugated (bs-18767R) at 1:400 overnight at 4°C, followed by

operating according to SP Kit(Rabbit) (sp-0023) instructions and DAB staining.