

METTL11B Polyclonal Antibody
Purified Rabbit Polyclonal Antibody (Pab)
Catalog # AP57260**Specification**

METTL11B Polyclonal Antibody - Product Information

Application	IHC-P
Primary Accession	Q5VVY1
Reactivity	Rat, Pig, Cat, Dog, Bovine
Host	Rabbit
Clonality	Polyclonal
Calculated MW	32400

METTL11B Polyclonal Antibody - Additional Information**Gene ID** 149281**Other Names**

Alpha N-terminal protein methyltransferase 1B, 2.1.1.299, Methyltransferase-like protein 11B, X-Pro-Lys N-terminal protein methyltransferase 1B, NTM1B, METTL11B, C1orf184, NRMT2

Format

0.01M TBS(pH7.4), 0.09% (W/V) sodium azide and 50% Glyce

Storage

Store at -20 °C for one year. Avoid repeated freeze/thaw cycles. When reconstituted in sterile pH 7.4 0.01M PBS or diluent of antibody the antibody is stable for at least two weeks at 2-4 °C.

METTL11B Polyclonal Antibody - Protein Information**Name** NTMT2 ([HGNC:31932](#))**Function**

Alpha N-methyltransferase that methylates the N-terminus of target proteins containing the N-terminal motif [Ala/Pro/Ser]-Pro-Lys when the initiator Met is cleaved. Specifically catalyzes monomethylation of exposed alpha-amino group of Ala or Ser residue in the [Ala/Ser]-Pro-Lys motif and Pro in the Pro-Pro-Lys motif (PubMed:<[a href="http://www.uniprot.org/citations/24090352" target="_blank">24090352](http://www.uniprot.org/citations/24090352), PubMed:<[a href="http://www.uniprot.org/citations/30417120" target="_blank">30417120](http://www.uniprot.org/citations/30417120)). Predominantly functions as a mono- methyltransferase but is also able to di-/tri-methylate the GPKRIA peptide and di-methylate the PPKRIA peptide (in vitro) (PubMed:<[a href="http://www.uniprot.org/citations/30417120" target="_blank">30417120](http://www.uniprot.org/citations/30417120)). May activate NTMT1 by priming its substrates for trimethylation (PubMed:<[a href="http://www.uniprot.org/citations/24090352" target="_blank">24090352](http://www.uniprot.org/citations/24090352)).

Cellular Location

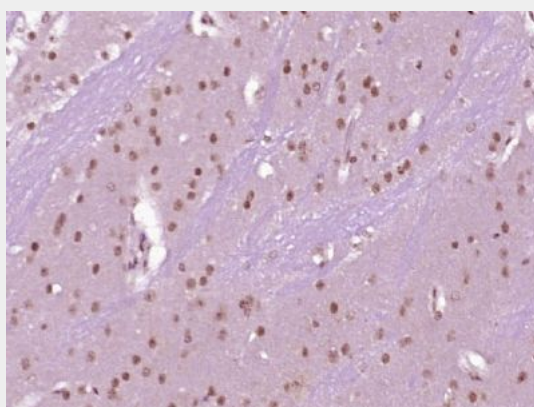
Nucleus.

METTL11B Polyclonal Antibody - Protocols

Provided below are standard protocols that you may find useful for product applications.

- [Western Blot](#)
- [Blocking Peptides](#)
- [Dot Blot](#)
- [Immunohistochemistry](#)
- [Immunofluorescence](#)
- [Immunoprecipitation](#)
- [Flow Cytometry](#)
- [Cell Culture](#)

METTL11B Polyclonal Antibody - Images



Paraformaldehyde-fixed, paraffin embedded (mouse brain tissue); Antigen retrieval by boiling in sodium citrate buffer (pH6.0) for 15min; Block endogenous peroxidase by 3% hydrogen peroxide for 20 minutes; Blocking buffer (normal goat serum) at 37°C for 30min; Antibody incubation with (METTL11B) Polyclonal Antibody, Unconjugated (bs-18815R) at 1:400 overnight at 4°C, followed by operating according to SP Kit(Rabbit) (sp-0023) instructions and DAB staining.