

**METTL7A Polyclonal Antibody**  
**Purified Rabbit Polyclonal Antibody (Pab)**  
**Catalog # AP57276****Specification**

---

**METTL7A Polyclonal Antibody - Product Information**

Application	WB
Primary Accession	<a href="#">O9H8H3</a>
Reactivity	Rat
Host	Rabbit
Clonality	Polyclonal
Calculated MW	28319

**METTL7A Polyclonal Antibody - Additional Information****Gene ID** 25840**Other Names**

Methyltransferase-like protein 7A, 2.1.1.-, Protein AAM-B, METTL7A

**Format**

0.01M TBS(pH7.4), 0.09% (W/V) sodium azide and 50% Glyce

**Storage**

Store at -20 °C for one year. Avoid repeated freeze/thaw cycles. When reconstituted in sterile pH 7.4 0.01M PBS or diluent of antibody the antibody is stable for at least two weeks at 2-4 °C.

**METTL7A Polyclonal Antibody - Protein Information****Name** TMT1A {ECO:0000303|PubMed:37137720, ECO:0000312|HGNC:HGNC:24550}**Function**

Thiol S-methyltransferase that catalyzes the transfer of a methyl group from S-adenosyl-L-methionine to alkyl and phenolic thiol- containing acceptor substrates. Together with TMT1B accounts for most of S-thiol methylation activity in the endoplasmic reticulum of hepatocytes (PubMed:<a href="http://www.uniprot.org/citations/37137720" target="\_blank">37137720</a>). Able to methylate the N6 position of adenosine residues in long non-coding RNAs (lncRNAs). May facilitate lncRNAs transfer into exosomes at the tumor-stroma interface (PubMed:<a href="http://www.uniprot.org/citations/34980213" target="\_blank">34980213</a>). Promotes osteogenic and odontogenic differentiation by regulating the expression of genes involved in stem cell differentiation and survival (PubMed:<a href="http://www.uniprot.org/citations/34226523" target="\_blank">34226523</a>, PubMed:<a href="http://www.uniprot.org/citations/34790668" target="\_blank">34790668</a>). Targeted from the endoplasmic reticulum to lipid droplets, where it recruits cellular proteins to form functional organelles (PubMed:<a href="http://www.uniprot.org/citations/19773358" target="\_blank">19773358</a>).

**Cellular Location**

Lipid droplet. Endoplasmic reticulum. Membrane. Microsome Cytoplasm, cytosol. Note=Inserted in the ER membrane and migrates from the inserted site to lipid droplet

#### Tissue Location

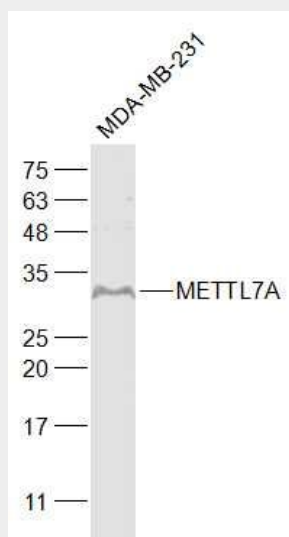
Expressed in the liver.

### METTL7A Polyclonal Antibody - Protocols

Provided below are standard protocols that you may find useful for product applications.

- [Western Blot](#)
- [Blocking Peptides](#)
- [Dot Blot](#)
- [Immunohistochemistry](#)
- [Immunofluorescence](#)
- [Immunoprecipitation](#)
- [Flow Cytometry](#)
- [Cell Culture](#)

### METTL7A Polyclonal Antibody - Images



#### Sample:

MDA-MB-231(Human) Cell Lysate at 30 ug

Primary: Anti-METTL7A (bs-18852R) at 1/1000 dilution

Secondary: IRDye800CW Goat Anti-Rabbit IgG at 1/20000 dilution

Predicted band size: 25 kD

Observed band size: 32 kD