

RSPRY1 Polyclonal Antibody
Purified Rabbit Polyclonal Antibody (Pab)
Catalog # AP57285**Specification****RSPRY1 Polyclonal Antibody - Product Information**

Application	WB, IHC-P, IHC-F, IF, ICC
Primary Accession	Q96DX4
Reactivity	Rat, Pig, Chimpanzee, Dog, Bovine
Host	Rabbit
Clonality	Polyclonal
Calculated MW	62 KDa
Physical State	Liquid
Immunogen	KLH conjugated synthetic peptide derived from human RSPRY1
Epitope Specificity	51-150/576
Isotype	IgG
Purity	
affinity purified by Protein A	
Buffer	0.01M TBS (pH7.4) with 1% BSA, 0.02% Proclin300 and 50% Glycerol.
SUBCELLULAR LOCATION	Secreted.
SIMILARITY	Contains 1 B30.2/SPRY domain. Contains 1 RING-type zinc finger.
Important Note	This product as supplied is intended for research use only, not for use in human, therapeutic or diagnostic applications.

Background Descriptions

RSPRY1 is a 576 amino acid secreted protein that contains one RING-type zinc finger and a B30.2/SPRY domain. Existing as two alternatively spliced isoforms, RSPRY1 is encoded by a gene that maps to human chromosome 16q13. Chromosome 16 encodes over 900 genes and comprises nearly 3% of the human genome. The GAN gene is located on chromosome 16 and, with mutation, may lead to giant axonal neuropathy, a nervous system disorder characterized by increasing malfunction with growth. The rare disorder Rubinstein-Taybi syndrome is also associated with chromosome 16, as is Crohn's disease, which is a gastrointestinal inflammatory condition.

RSPRY1 Polyclonal Antibody - Additional Information**Gene ID** 89970**Other Names**

RING finger and SPRY domain-containing protein 1, RSPRY1, KIAA1972

Dilution

dilution_WB WB ~ 1:1000
dilution_IHC-P IHC-P ~ N/A
dilution_IHC-F IHC-F ~ N/A
dilution_IF IF ~ 1:50 ~ 200
dilution_ICC ICC ~ N/A

Storage

Store at -20 °C for one year. Avoid repeated freeze/thaw cycles. When reconstituted in sterile pH 7.4 0.01M PBS or diluent of antibody the antibody is stable for at least two weeks at 2-4 °C.

RSPRY1 Polyclonal Antibody - Protein Information

Name RSPRY1

Synonyms KIAA1972

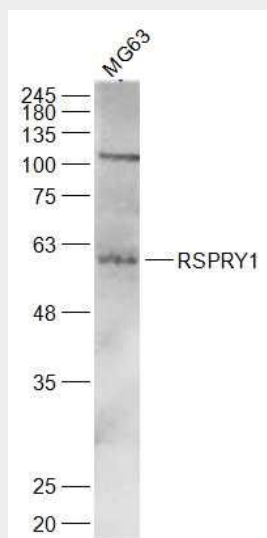
Cellular Location

Secreted.

RSPRY1 Polyclonal Antibody - Protocols

Provided below are standard protocols that you may find useful for product applications.

- [Western Blot](#)
- [Blocking Peptides](#)
- [Dot Blot](#)
- [Immunohistochemistry](#)
- [Immunofluorescence](#)
- [Immunoprecipitation](#)
- [Flow Cytometry](#)
- [Cell Culture](#)

RSPRY1 Polyclonal Antibody - Images

Sample:

MG63(Human) Cell Lysate at 30 ug

Primary: Anti-RSPRY1 (bs-18879R) at 1/1000 dilution

Secondary: IRDye800CW Goat Anti-Rabbit IgG at 1/20000 dilution

Predicted band size: 62 kD

Observed band size: 60 kD

