

MIA3 Polyclonal Antibody
Purified Rabbit Polyclonal Antibody (Pab)
Catalog # AP57315**Specification****MIA3 Polyclonal Antibody - Product Information**

Application	IHC-P, IHC-F, IF, ICC
Primary Accession	Q5JRA6
Reactivity	Rat
Host	Rabbit
Clonality	Polyclonal
Calculated MW	213702

MIA3 Polyclonal Antibody - Additional Information**Gene ID** 375056**Other Names**

Transport and Golgi organization protein 1 homolog, TANGO1, C219-reactive peptide, D320, Melanoma inhibitory activity protein 3 {ECO:0000312|HGNC:HGNC:24008}, MIA3 ([HGNC:24008](http://www.genenames.org/cgi-bin/gene_symbol_report?hgnc_id=24008))

Dilution

IHC-P~~N/A
IHC-F~~N/A
IF~~1:50~200
ICC~~N/A

Format

0.01M TBS(pH7.4), 0.09% (W/V) sodium azide and 50% Glyce

Storage

Store at -20 °C for one year. Avoid repeated freeze/thaw cycles. When reconstituted in sterile pH 7.4 0.01M PBS or diluent of antibody the antibody is stable for at least two weeks at 2-4 °C.

MIA3 Polyclonal Antibody - Protein Information**Name** MIA3 ([HGNC:24008](#))**Function**

Plays a role in the transport of cargos that are too large to fit into COPII-coated vesicles and require specific mechanisms to be incorporated into membrane-bound carriers and exported from the endoplasmic reticulum. This protein is required for collagen VII (COL7A1) secretion by loading COL7A1 into transport carriers. It may participate in cargo loading of COL7A1 at endoplasmic reticulum exit sites by binding to COPII coat subunits Sec23/24 and guiding SH3-bound COL7A1 into a growing carrier. Does not play a role in global protein secretion and is apparently specific to COL7A1 cargo loading. However, it may participate in secretion of other proteins in cells that do not secrete COL7A1. It is also specifically required for the secretion of lipoproteins by participating

in their export from the endoplasmic reticulum (PubMed:19269366, PubMed:27138255). Required for correct assembly of COPII coat components at endoplasmic reticulum exit sites (ERES) and for the localization of SEC16A and membrane-bound ER- resident complexes consisting of MIA2 and PREB/SEC12 to ERES (PubMed:28442536).

Cellular Location

Endoplasmic reticulum membrane; Single-pass membrane protein. Note=Localizes at endoplasmic reticulum exit sites (ERES), also known as transitional endoplasmic reticulum (tER) (PubMed:32101163). SEC16A is required for its proper localization to ERES. After loading of COL7A1 into transport carriers, it is not incorporated into COPII carriers and remains in the endoplasmic reticulum membrane.

Tissue Location

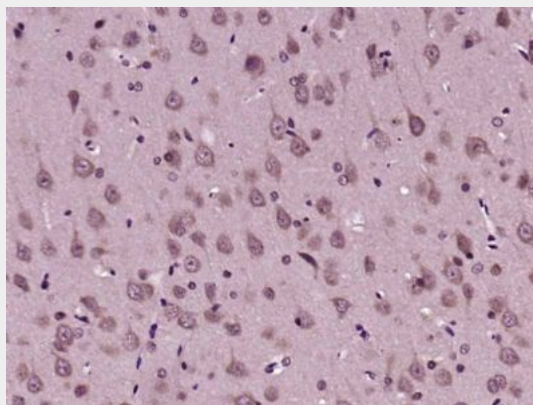
Broadly expressed, except in bone marrow and peripheral blood mononuclear cells.
Down-regulated in melanoma tissue

MIA3 Polyclonal Antibody - Protocols

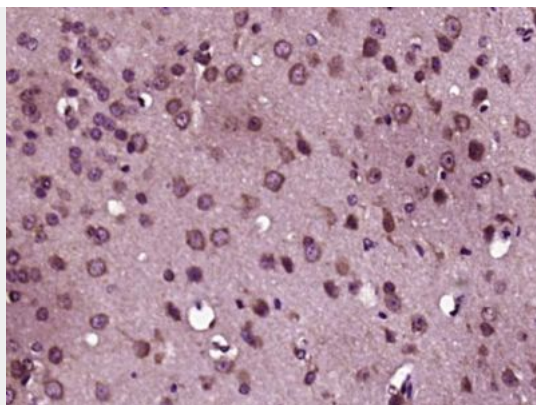
Provided below are standard protocols that you may find useful for product applications.

- [Western Blot](#)
- [Blocking Peptides](#)
- [Dot Blot](#)
- [Immunohistochemistry](#)
- [Immunofluorescence](#)
- [Immunoprecipitation](#)
- [Flow Cytometry](#)
- [Cell Culture](#)

MIA3 Polyclonal Antibody - Images



Paraformaldehyde-fixed, paraffin embedded (Rat brain); Antigen retrieval by boiling in sodium citrate buffer (pH6.0) for 15min; Block endogenous peroxidase by 3% hydrogen peroxide for 20 minutes; Blocking buffer (normal goat serum) at 37°C for 30min; Antibody incubation with (MIA3) Polyclonal Antibody, Unconjugated (bs-18930R) at 1:400 overnight at 4°C, followed by operating according to SP Kit(Rabbit) (sp-0023) instructions and DAB staining.



Paraformaldehyde-fixed, paraffin embedded (Mouse brain); Antigen retrieval by boiling in sodium citrate buffer (pH6.0) for 15min; Block endogenous peroxidase by 3% hydrogen peroxide for 20 minutes; Blocking buffer (normal goat serum) at 37°C for 30min; Antibody incubation with (MIA3) Polyclonal Antibody, Unconjugated (bs-18930R) at 1:400 overnight at 4°C, followed by operating according to SP Kit(Rabbit) (sp-0023) instructions and DAB staining.